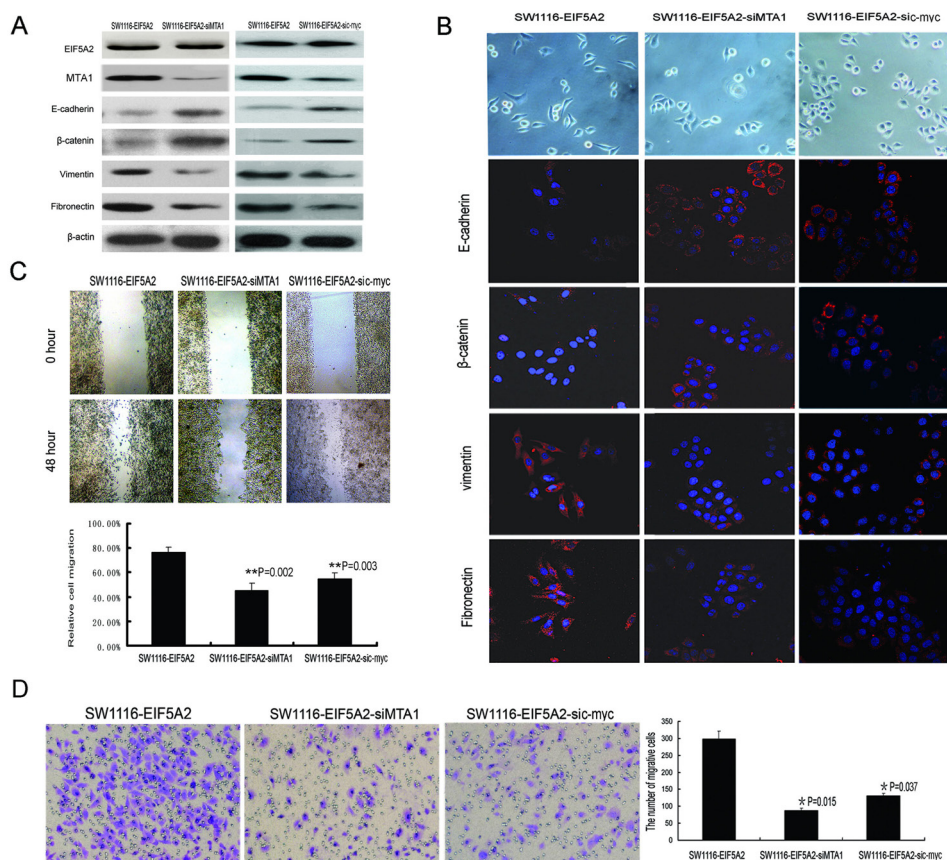


Correction: Overexpression of EIF5A2 promotes colorectal carcinoma cell aggressiveness by upregulating MTA1 through C-myc to induce epithelial—mesenchymal transition

Zhu W, Cai M, Tong Z, *et al.* Overexpression of EIF5A2 promotes colorectal carcinoma cell aggressiveness by upregulating MTA1 through C-myc to induce epithelial—mesenchymal transition. *Gut* 2012;61:562–75. doi:10.1136/gutjnl-2011-300207

The representative images of SW116-EIF5A2-sic-myc cells in Migration assay of Figure 6C lower right and Invasion assay of Figure 6D right is incorrect.

The correct figure 6 is shown below. The figure legend remains the same.



© Author(s) (or their employer(s)) 2021. No commercial re-use. See rights and permissions. Published by BMJ.

Gut 2021;70:e4. doi:10.1136/gutjnl-2011-300207corr1

