

Editor: Michael J G Farthing

Associate Editors: David Adams, John Atherton, Ian Forgacs (reviews, editorials) Thomas T MacDonald, Jan Tack, Nicholas A Wright

Evidence-Based Gastroenterology Advisory Group:

Richard F A Logan, Stephen J W Evans, Andrew Hart, Jane Metcalf

Managing Editor: Andrea Horgan

Technical Editors: Linda Gough, Josie Stephenson

Editorial Office Manager: Claire Castle

Editorial Assistants: Alex Hodge, Hannah Schlesinger

## EDITORIAL COMMITTEE

M J P Arthur (UK)	O Lundgren (Sweden)
K E Barrett (USA)	P Malfertheiner (Germany)
E Beubler (Austria)	D Martin (UK) (USA)
M K Bhan (India)	E Mayer (USA)
M Blaser (USA)	K Moore (UK)
H Buller (The Netherlands)	M F Neurath (USA)
J Calam (UK)	M Novelli (UK)
R W Chapman (UK)	F Pallone (Italy)
T Chiba (Japan)	R H Riddell (Canada)
S Collins (Canada)	S Schalm (The Netherlands)
E Corazzini (Italy)	S Schreiber (Germany)
A M Di Bisceglie (USA)	M Swain (Canada)
L Greco (Italy)	D Schuppan (Germany)
R H Holloway (Australia)	J J Y Sung (Hong Kong)
P J Kahrilas (USA)	I Tomlinson (UK)
M A Kamm (UK)	G Triadafilopoulos (USA)
N F LaRusso (USA)	Z Tulassay (Hungary)
L Lundell (Sweden)	S J H van Deventer (The Netherlands)

S J W Evans (UK)  
Statistical adviser

Editor  
British Medical Journal

## Local editions

**China:** Excerpta Medica Asia Ltd, 19/F Eight Commercial Tower, 8 Sun Yip Street, Chai Wang, Hong Kong. Tel: +852 2965 1300; Fax: +852 2976 0778  
**Netherlands/Belgium:** Medicom Excel, Box 151, 1400 AD Bussum, Netherlands. Tel: +31 35 69 52480; Fax: +31 35 69 48565

**NOTES TO ADVERTISERS** Applications for advertisement space and for rates should be addressed to the Advertisement Manager, *Gut*, BMJ Publishing Group, BMA House, Tavistock Square, London WC1H 9JR.

**NOTICE TO SUBSCRIBERS** *Gut* is published monthly. The annual subscription rates for institutions are £300 (USA \$462) for print only. Online licences are priced on the FTE basis and allow access by the whole institution. Institutions that opt for online access may purchase print at deeply discounted rates. Personal subscription rates which include online access are £125 (\$199). Enquiries regarding rates and orders should be sent to the Subscription Manager, *Gut*, BMJ Publishing Group, BMA House, Tavistock Square, London WC1H 9JR. Subscribers may pay for their subscriptions by Mastercard, Visa, or American Express, by quoting on their order the credit or chargecard preferred, together with the appropriate personal account number and expiry date of the card. Orders can also be placed with any leading subscription agent or bookseller. (For the convenience of readers in the USA subscription orders, with or without payment, may also be sent to the BMJ Publishing Group, PO Box 590A, Kennebunkport, ME 04046, USA. Tel: 001 800 236 6265. All enquiries, however, must be addressed to the publisher in London.) All enquiries regarding air mail rates and single copies already published should be addressed to the publisher in London.

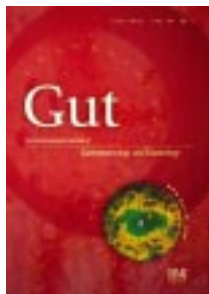
**COPYRIGHT** © 2001 *Gut*. This publication is copyright under the Berne Convention and the International Copyright Convention. All rights reserved. Apart from any relaxations permitted under national copyright laws, no part of this publication may be reproduced, stored in a retrieval system or transmitted in any form or by any means without the prior permission of the copyright owners. Permission is not, however, required to copy abstracts of papers or of articles on condition that a full reference to the source is shown. Multiple copying of the contents of the publication without permission is always illegal. Periodicals postage paid, Rahway NJ. Post-master: send address changes to: *Gut*, c/o Mercury Airfreight International Ltd., 365 Blair Road, Avenel, NJ 07001, USA.

ISSN 0017-5749

ISSN 1468-3288 (electronic *Gut*)

*Gut* is now available full text online:  
[www.gutjnl.com](http://www.gutjnl.com)

Published by the BMJ Publishing Group  
Printed in UK on acid free paper by Cambrian Printers,  
Aberystwyth.



Immunofluorescence recorded by confocal laser microscopy of a gastric biopsy, showing combined images of polyclonal antiserum against LI-cadherin and monoclonal antibody against villin. See p 73.

## Editorial

- Getting our journals to developing countries  
*M J G Farthing, A Williamson*

## Leading article

- Prospects for intervention in gastric carcinogenesis: reversibility of gastric atrophy and intestinal metaplasia  
*M F Dixon*

## Commentaries

- GRP and Pavlov's dogs  
*M Feldman*
- Surviving too long in Crohn's disease  
*A Di Sabatino, G R Corazza*
- The subtleties of intestinal metaplasia  
*R Rouzier, S Robine*

## Clinical @lert

- Methotrexate: a useful alternative in Crohn's disease?  
*A B Hawthorne*

## Stomach

- Conservation of the *cag* pathogenicity island is associated with *vacA* alleles and gastroduodenal disease in South African *Helicobacter pylori* isolates  
*M Kidd, A J Lastovica, J C Atherton, J A Louw*
- Helicobacter pylori* induced transactivation of SRE and AP-1 through the ERK signalling pathway in gastric cancer cells  
*Y Mitsuno, H Yoshida, S Maeda, K Ogura, Y Hirata, T Kawabe, Y Shiratori, M Omata*
- Regulation of gastric function by endogenous gastrin releasing peptide in humans: studies with a specific gastrin releasing peptide receptor antagonist  
*P Hildebrand, F S Lehmann, S Ketterer, A D Christ, T Stingelin, J Beltinger, A H Gibbons, D H Coy, J Calam, F Larsen, C Beglinger*
- Age and alarm symptoms do not predict endoscopic findings among patients with dyspepsia: a multicentre database study  
*M B Wallace, V L Durkalski, J Vaughan, Y Y Palesch, E D Libby, P S Jowell, N J Nickl, S M Schutz, J W Leung, P B Cotton*

## Inflammatory bowel disease

- Decreased Bax expression by mucosal T cells favours resistance to apoptosis in Crohn's disease  
*J Itoh, C de la Motte, S A Strong, A D Levine, C Fiocchi*
- Interleukin 10 (Tenovil) in the prevention of postoperative recurrence of Crohn's disease  
*J-F Colombel, P Rutgeerts, H Malchow, M Jacyna, O H Nielsen, J Rask-Madsen, S Van Deventer, A Ferguson, P Desreumaux, A Forbes, K Geboes, L Melani, M Cohard*

**Gastrointestinal infection**

- 47 *Escherichia coli* strains colonising the gastrointestinal tract protect germfree mice against *Salmonella typhimurium* infection *S Hudault, J Guignot, A L Servin*
- 56 Involvement of nerves and calcium channels in the intestinal response to *Clostridium difficile* toxin A: an experimental study in rats in vivo *J Sörensson, M Jodal, O Lundgren*

**Functional abdominal disorders**

- 66 Low socioeconomic class is a risk factor for upper and lower gastrointestinal symptoms: a population based study in 15 000 Australian adults *P Bytzer, S Howell, M Leemon, L J Young, M P Jones, N J Talley*

**Gastrointestinal cancer**

- 73 LI-cadherin: a marker of gastric metaplasia and neoplasia *C Grötzing, J Kneifel, D Patschan, N Schnoy, I Anagnostopoulos, S Faiss, R Tauber, B Wiedenmann, R Geßner*
- 82 Genomic homogeneity in fibrolamellar carcinomas *Y Sirivatanauksorn, V Sirivatanauksorn, N R Lemoine, R C N Williamson, B R Davidson*
- 87 Coffee consumption and risk of colorectal cancer in a population based prospective cohort of Swedish women *P Terry, L Bergkvist, L Holmberg, A Wolk*
- 91 Risks, costs, and compliance limit colorectal adenoma surveillance: lessons from a randomised trial *J N Lund, J H Scholefield, M J Grainge, S J Smith, C Mangham, N C Armitage, M H Robinson, R F A Logan*
- 97 Effects of cellular redox balance on induction of apoptosis by eicosapentaenoic acid in HT29 colorectal adenocarcinoma cells and rat colon in vivo *P Latham, E K Lund, J C Brown, I T Johnson*

**Liver disease**

- 106 Gene expression of interleukin 18 in unstimulated peripheral blood mononuclear cells of patients with alcoholic cirrhosis *C Hanck, T Manigold, U Böcker, M Kurimoto, C B Köbel, M V Singer, S Rossol*
- 112 High arterial compliance in cirrhosis is related to low adrenaline and elevated circulating calcitonin gene related peptide but not to activated vasoconstrictor systems *J H Henriksen, S Møller, S Schifter, J Abrahamsen, U Becker*
- 119 After portal branch ligation in the rat, cellular proliferation in associated with

selective induction of c-Ha-ras, p53, cyclin E, and Cdk2 *P Stärkel, L Lambotte, C Sempoux, C De Saeger, A Saliez, D Maiter, Y Horsmans*

- 131 Tumour necrosis factor  $\alpha$  impairs function of liver derived T lymphocytes and natural killer cells in patients with primary sclerosing cholangitis *X Bo, U Broome, M Remberger, S Sumitran-Holgersson*

**Case report**

- 142 Pathological documentation of complete elimination of Barrett's metaplasia following endoscopic multipolar electrocoagulation therapy *M B Fennerty, C L Corless, B Sheppard, D O Faigel, D A Lieberman, R E Sampliner*

**Review**

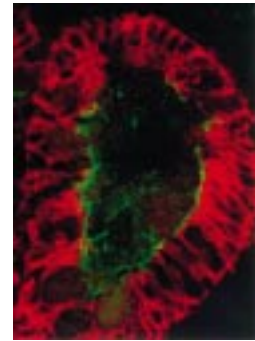
- 145 Classification of oesophageal motility abnormalities *S J Spechler, D O Castell*

**Therapy update**

- 152 Recurrent *Clostridium difficile* diarrhoea *L Kyne, C P Kelly*

**Letters to the editor**

- 154 Measurement of the stiffness of endoscopes—a plea for commonality *G D Bell, K Burn*
- 154 Research outcomes in British gastroenterology: an audit of the subsequent full publication of abstracts presented at the British Society of Gastroenterology *D S Sanders, M J Carter, D P Hurlstone, A J Lobo, N Hoggard*
- 155 Leptin in the human stomach *S Cinti, R de Matteis, E Ceresi, C Picó, J Oliver, P Oliver, A Palou, A Obrador, C Maffei*
- 155 Histological and genetic heterogeneity in synchronous hepatocellular carcinoma *F Cetta, M Zukermann, M T Ercolani, A Mazziotti*
- 156 Phenotypic expression of the HFE gene mutation (C282Y) among the hospitalised population *S J Moodie, J D Maxwell*
- 156 The African enigma: the parasite's perspective *J G Fox, T C Wang, C Nagler-Anderson*
- 157 Liver biopsy: "blind" or under ultrasound control *I M Murray-Lyon, R de Wilde*
- 158 Notes



See p 73



See p 142