

AIMS AND SCOPE

Gut publishes high quality original papers on all aspects of gastroenterology and hepatology as well as topical, authoritative editorials, comprehensive reviews, case reports, therapy updates and other articles of interest to gastroenterologists and hepatologists.

EDITOR

Professor Robin C Spiller

DEPUTY EDITOR

John C Atherton

ASSOCIATE EDITORS

David H Adams
Ray J Playford
Jürgen Scholmerich
Jan Tack
Alastair J M Watson

EVIDENCE BASED GASTROENTEROLOGY

ADVISORY GROUP

Richard F A Logan
Stephen J W Evans
Andrew Hart
Jane Metcalf

EDITORIAL OFFICE MANAGER

Claire Castle

EDITORIAL ASSISTANTS

Craig Raybould
Julia Cresswell

TECHNICAL EDITORS

Linda Gough
Josie Stephenson

EDITORIAL BOARD

I Bjarnason - UK	K Moore - UK
G E Boeckxstaens - Netherlands	M F Neurath - USA
L Bueno-France	M Novelli - UK
A M Di Bisceglie - USA	D Schuppan - Germany
H J Cooke - USA	F Shanahan - Ireland
E El-Omar - UK	N A Shepherd - UK
I Forgacs - UK	J J Y Sung - Hong Kong
S L Friedman - USA	G Tzogas - Canada
L Greco - Italy	G Triadafilopoulos - USA
R Jones - UK	Z Tulassay - Hungary
M A Kamm - UK	S J H Van Deventer - Netherlands
E J Kuipers - Netherlands	N Wright - UK
T T MacDonald - UK	S J W Evans (Statistical Adviser)
G W McCaughan - Australia	Editor, British Medical Journal
K E L McColl - UK	
H R Mertz - USA	

LOCAL EDITIONS

China Excerpta Medica Asia Ltd 19/F Eight Commercial Tower 8 Sun Yip Street Chai Wang Hong Kong Telephone: +852 2965 1300 Fax: +852 2976 0778	Netherlands/Belgium Medicom Exvcel Box 151 1400 AD Bussum Netherlands Telephone: +31 35 69 52480 Fax: +31 35 69 48565
---	--

COPYRIGHT

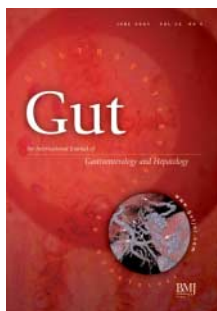
© 2003 BMJ Publishing Group & British Society of Gastroenterology. All rights reserved; no part of this publication may be reproduced, stored in a retrieval system, or transmitted in any form or by any means, electronic, mechanical, photocopying, recording, or otherwise without the prior permission of Gut. Authors are required to grant Gut an exclusive licence to publish
Print ISSN 0017 5749
Online ISSN 1468 3288
Publication: Monthly (subscribers also receive all supplements)

INSTRUCTIONS TO AUTHORS

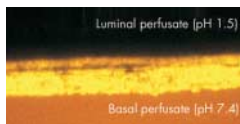
Full instructions are available online at www.gutjnl.com/misc/ifora.shtml
If you do not have web access please contact the editorial office

Gut is published by BMJ Publishing Group and printed in the UK on acid free paper by Cambrian Printers, Aberystwyth

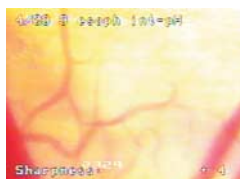
Periodicals postage paid, Rahway, NJ. Postmaster: send address changes to: Gut, c/o Mercury Airfreight International Ltd, 365 Blair Road, Avenel, NJ 07001, USA



Detection of submucosal gastric fundal varices with CT (from the paper by Willmann *et al*, pp 886–92).



See p 775



See p 775

NEW
ONLINE
SUBMISSION
GO TO
WEBSITE
TO SUBMIT YOUR
MANUSCRIPT



www.publicationethics.org.uk

This journal is a member of and subscribes to the principles of the Committee on Publication Ethics

Oesophagus

- 775 Direct measurement of acid permeation into rat oesophagus *S Tanaka, S Chu, M Hirokawa, M H Montrose, J D Kaunitz*
- 784 Relevance of ineffective oesophageal motility during oesophageal acid clearance *M Simrén, J Silny, R Holloway, J Tack, J Janssens, D Sifrim*

Stomach

- 791 On the existence and location of cardiac mucosa: an autopsy study in embryos, fetuses, and infants *G De Hertogh, P Van Eyken, N Ectors, J Tack, K Geboes*
- 797 *Helicobacter pylori* infection induces duodenitis and superficial duodenal ulcer in Mongolian gerbils *T Ohkusa, I Okayasu, H Miwa, K Ohtaka, S Endo, N Sato*
- 804 Evaluation of a novel monoclonal enzyme immunoassay for detection of *Helicobacter pylori* antigen in stool from children *S Koletzko, N Konstantopoulos, D Bosman, A Feydt-Schmidt, A van der Ende, N Kalach, J Raymond, H Rüssmann*
- 807 Gastric intestinal metaplasia as detected by a monoclonal antibody is highly associated with gastric adenocarcinoma *Z K Mirza, K K Das, J Slate, R N Mapitigama, P S Amenta, L H Griffel, L Ramsundar, J Watari, K Yokota, H Tanabe, T Sato, Y Kohgo, K M Das*
- 813 Gastrin activates nuclear factor κ B (NF κ B) through a protein kinase C dependent pathway involving NF κ B inducing kinase, inhibitor κ B (I κ B) kinase, and tumour necrosis factor receptor associated factor 6 (TRAF6) in MKN-28 cells transfected with gastrin receptor *M Ogasa, Y Miyazaki, S Hiraoka, S Kitamura, Y Nagasawa, O Kishida, T Miyazaki, T Kiyohara, Y Shinomura, Y Matsuzawa*
- 820 Incidence of gastroduodenal ulcers in patients with rheumatoid arthritis after 12 weeks of rofecoxib, naproxen, or placebo: a multicentre, randomised, double blind study *C J Hawkey, L Laine, T Simon, H Quan, S Shingo, J Evans, on behalf of the Rofecoxib Rheumatoid Arthritis Endoscopy Study Group*

Small intestine

- 827 Extracellular MUC3 mucin secretion follows adherence of *Lactobacillus* strains to intestinal epithelial cells in vitro *D R Mack, S Ahrne, L Hyde, S Wei, M A Hollingsworth*
- 834 Mobilisation of enterocyte fat stores by oral glucose in humans *M D Robertson, M Parkes, B F Warren, D J P Ferguson, K G Jackson, D P Jewell, K N Frayn*

Inflammatory bowel disease

- 840 Card15 gene overexpression in mononuclear and epithelial cells of the inflamed Crohn's disease colon *D Berrebi, R Maudinas, J-P Hugot, M Chamillard, F Chareyre, P De Lagausie, C Yang, P Desreumaux, M Giovannini, J-P Cézard, H Zouali, D Emilie, M Peuchmaur*

- 847 Neutrophil derived human S100A12 (EN-RAGE) is strongly expressed during chronic active inflammatory bowel disease *D Foell, T Kucharzik, M Kraft, T Vogl, C Sorg, W Domschke, J Roth*

Colon

- 854 Non-genomic regulation of intermediate conductance potassium channels by aldosterone in human colonic crypt cells *K A Bowley, M J Morton, M Hunter, G I Sandle*
- 861 Relations between amount and type of alcohol and colon and rectal cancer in a Danish population based cohort study *A Pedersen, C Johansen, M Grønbaek*
- 868 Influence of dietary factors on colorectal cancer survival *X Dray, M-C Boutron-Ruault, S Bertrais, D Sapinho, A-M Benhamiche-Bouvier, J Faivre*

Liver

- 874 Administration of protegrin peptide IB-367 to prevent endotoxin induced mortality in bile duct ligated rats *A Giacometti, O Cirioni, R Ghiselli, F Mocchegiani, G D'Amato, M Simona Del Prete, F Orlando, W Kamysz, J Lukasiak, V Saba, G Scalise*
- 879 Child-Pugh versus MELD score in predicting survival in patients undergoing transjugular intrahepatic portosystemic shunt *B Angermayr, M Cejna, F Karnel, M Gschwantler, F Koenig, J Pidlich, H Mendel, L Pichler, M Wichlas, A Kreil, M Schmid, A Ferlitsch, E Lipinski, H Brunner, J Lammer, P Ferenci, A Gangl, M Peck-Radosavljevic*
- 886 Detection of submucosal gastric fundal varices with multi-detector row CT angiography *J K Willmann, D Weishaupt, T Böhm, T Pfammatter, B Seifert, B Marincek, P Bauerfeind*
- 893 A 10 year follow up study of patients transplanted for autoimmune hepatitis: histological recurrence precedes clinical and biochemical recurrence *J-C Duclos-Vallée, M Sebagh, K Rifai, C Johanet, E Ballot, C Guettier, V Karam, M Hurtova, C Feray, M Reynes, H Bismuth, D Samuel*

Case reports

- 898 Rapidly progressive adenomatous polyposis in a patient with germline mutations in both the APC and MLH1 genes: the worst of two worlds *R Scheenstra, F E M Rijcken, J J Koornstra, H Hollema, R Fodde, F H Menko, R H Sijmons, C M A Bijleveld, J H Kleibeuker*

- 900 Second infection with a different hepatitis C virus genotype in a intravenous drug user during interferon therapy *T Asselah, D Vidaud, A Doloy, N Boyer, M Martinot, M Vidaud, D Valla, P Marcellin*
- 903 Attenuated familial adenomatous polyposis presenting as ampullary adenocarcinoma *J D Trimbath, C Griffin, K Romans, F M Giardiello*



See p 797

Gut file

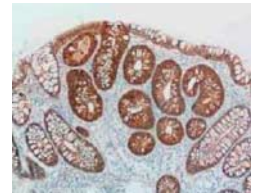
- 905 Hepatoma in a young adult: to biopsy or not to biopsy? *C Brenner, Z Amin, A C Wotherspoon, P Vlavianos, J Andreyev*

Review

- 907 Chronic pancreatitis: the perspective of pain generation by neuroimmune interaction *P Di Sebastiano, F F di Mola, D E Bockman, H Friess, M W Büchler*

PostScript

- 912 Paris staging system for primary gastrointestinal lymphomas *A Ruskoné-Fourmestaux, B Dragosics, A Morgner, A Wotherspoon, D de Jong*
- 913 A new cause for CA19.9 elevation: heavy tea consumption *M Howaizi, M Abboura, C Krespine, M-S Sbai-Idrissi, O Marty, M Djabbari-Sobhani*
- 914 Non-alcoholic steatohepatitis and hepatic steatosis in patients with adult onset growth hormone deficiency *T Ichikawa, K Hamasaki, H Ishikawa, E Ejima, K Eguchi, K Nakao*
- 914 Expression of thiopurine methyltransferase in South Asians *E Tsironi, M Browne, D S Rampton, A B Ballinger*
- 915 Fatigue is associated with high circulating leptin levels in chronic hepatitis C *M Romero-Gómez, D Sánchez-Muñoz, M Cruz*
- 915 Mutant K-ras2 in serum *H J N Andreyev, R Benamouzig, M Beranek, P Clarke, D Cunningham, A R Norman, W Giaretti, A F P M de Goeij, B J Iacopetta, E Jullian, K Krtolica, J Q Lee, S T Wang, N Lees, F Al-Mulla, O Muller, M Pauly, V Pricolo, A Russo, C Troungos, N Urosevic, R Ward*
- 916 Book review Notices



See p 898