

Cover: *Giardia lamblia*. Coloured scanning electron micrograph (SEM) of the parasite *Giardia lamblia* in the human small intestine. Professors P M Motta and F M Magliocca/ Science Photo Library

Journal of the British Society of Gastroenterology

Impact Factor: 10.01

#### Editor

Professor Robin C Spiller (UK)

#### Deputy Editor

Magnus Simrén (Sweden)

#### Associate Editors

Ramon Bataller (Spain)  
Jean-Frédéric Colombel (France)  
Alexander Gerbes (Germany)  
Subrata Ghosh (UK)  
William Grady (USA)  
Ernst Kuipers (The Netherlands)  
Markus M Lerch (Germany)  
David Mutimer (UK)  
Severine Vermeire (Belgium)

#### Editorial Office

*Gut*  
BMJ Journals  
BMA House, Tavistock Square  
London, WC1H 9JR, UK  
T: +44 (0)20 7383 6394  
F: +44 (0)20 7383 6668  
E: [guteditorial@bmjgroup.com](mailto:guteditorial@bmjgroup.com)

ISSN: 0017-5749 (print)  
ISSN: 1468-3288 (online)

**Disclaimer:** *Gut* is owned and published by BMJ Publishing Group Ltd, a wholly owned subsidiary of the British Medical Association and the British Society of Gastroenterology. The owners grant editorial freedom to the Editor of *Gut*. *Gut* follows guidelines on editorial independence produced by the World Association of Medical Editors and the code on good publication practice of the Committee on Publication Ethics.

*Gut* is intended for medical professionals and is provided without warranty, express or implied. Statements in the Journal are the responsibility of their authors and advertisers and not authors' institutions, the BMJ Publishing Group, the British Society of Gastroenterology or the BMA unless otherwise specified or determined by law. Acceptance of advertising does not imply endorsement.

To the fullest extent permitted by law, the BMJ Publishing Group shall not be liable for any loss, injury or damage resulting from the use of *Gut* or any information in it whether based on contract, tort or otherwise. Readers are advised to verify any information they choose to rely on.

**Copyright** © 2008 BMJ Publishing Group and British Society of Gastroenterology. All rights reserved; no part of this publication may be reproduced, stored in a retrieval system or transmitted in any form or by any means, electronic, mechanical, photocopying, recording or otherwise without prior permission

*Gut* is published by BMJ Publishing Group Ltd, typeset by The Charlesworth Group and printed in the UK on acid-free paper from sustainable forests by Latimer Trend & Co Ltd, Plymouth, UK

*Gut* (USPS No: 002-278) is published monthly by BMJ Publishing Group and distributed in the USA by SPP, 75 Aberdeen Road, Emigsville, PA 17318, USA. Periodicals postage paid at Emigsville, PA, USA. POSTMASTER: send address changes to *Gut*, PO Box 437, Emigsville, PA 17318-0437, USA.

## Leading article

1481 Who votes for NOTES?

T Rösch

## Commentaries

1487 Subdividing functional dyspepsia: a paradigm shift?

N J Talley

1489 Should computed tomography be the modality of choice for imaging Crohn's disease in children? The radiation risk perspective

D J Brenner

1490 Branch intraductal papillary mucinous neoplasms: just the tip of the iceberg?

J Weitz, M W Büchler

1492 Prevention of post-ERCP pancreatitis: a little antacid might go a long way

A B Nagar, F Gorelick

## Stomach

1495 Relationship between symptoms and ingestion of a meal in functional dyspepsia

R Bisschops, G Karamanolis, J Arts, P Caenepeel, K Verbeke, J Janssens, J Tack

1504 The interferon gamma receptor 1 (*IFNGR1*) –56C/T gene polymorphism is associated with increased risk of early gastric carcinoma

P Canedo, G Corso, F Pereira, N Lunet, G Suriano, C Figueiredo, C Pedrazzani, H Moreira, H Barros, F Carneiro, R Seruca, F Roviello, J C Machado

## Inflammatory bowel disease

1509 Curcumin inhibits VEGF-mediated angiogenesis in human intestinal microvascular endothelial cells through COX-2 and MAPK inhibition



D G Binion, M F Otterson, P Rafiee

1518 C-reactive protein: a predictive factor and marker of inflammation in inflammatory bowel disease. Results from a prospective population-based study

M Henriksen, J Jahnsen, I Lygren, N Stray, J Sauar, M H Vatn, B Moum, and the IBSEN Study Group

1524 Crohn's disease: factors associated with exposure to high levels of diagnostic radiation

A N Desmond, K O'Regan, C Curran, S McWilliams, T Fitzgerald, M M Maher, F Shanahan

## Colorectal cancer

1531 Adiponectin suppresses colorectal carcinogenesis under the high-fat diet condition



T Fujisawa, H Endo, A Tomimoto, M Sugiyama, H Takahashi, S Saito, M Inamori, N Nakajima, M Watanabe, N Kubota, T Yamauchi, T Kadowaki, K Wada, H Nakagama, A Nakajima

1539 A high incidence of *MSH6* mutations in Amsterdam criteria II-negative families tested in a diagnostic setting

D Ramsoekh, A Wagner, M E van Leerdam, W N M Dinjens, E W Steyerberg, D J J Halley, E J Kuipers, D Dooijes

1545 Diagnostic utility of alarm features for colorectal cancer: systematic review and meta-analysis

A C Ford, S J O Veldhuyzen van Zanten, C C Rodgers, N J Talley, N B Vakil, P Moayyedi

## Pancreas

1555 The chemokine receptor CXCR4 is expressed in pancreatic intraepithelial neoplasia

R M Thomas, J Kim, M P Revelo-Penafiel, R Angel, D W Dawson, A M Lowy

1561 Development of ductal carcinoma of the pancreas during follow-up of branch duct intraductal papillary mucinous neoplasm of the pancreas

H Uehara, A Nakaizumi, O Ishikawa, H Iishi, K Tatsumi, R Takakura, T Ishida, Y Takano, S Tanaka, A Takenaka

1566 A pH-sensitive, neurogenic pathway mediates disease severity in a model of post-ERCP pancreatitis

M D Noble, J Romac, S R Vigna, R A Liddle

## Hepatology

1573 Regulation of prohepcidin processing and activity by the subtilisin-like proprotein convertases Furin, PC5, PACE4 and PC7

N Scamuffa, A Basak, C Lalou, A Wargnier, J Marcinkiewicz, G Siegfried, M Chrétien, F Calvo, N G Seidah, A-M Khatib

1583 Effectiveness of antiplatelet drugs against experimental non-alcoholic fatty liver disease

K Fujita, Y Nozaki, K Wada, M Yoneda, H Endo, H Takahashi, T Iwasaki, M Inamori, Y Abe, N Kobayashi, H Kirikoshi, K Kubota, S Saito, Y Nagashima, A Nakajima

**MORE CONTENTS ►**



This article has been chosen by the Editor to be of special interest or importance and is freely available online.



Articles carrying the Unlocked Logo are freely available online under the BMJ Journals unlocked scheme. See <http://gut.bmj.com/info/unlocked.dtl>

C O P E COMMITTEE ON PUBLICATION ETHICS

This journal is a member of and subscribes to the principles of the Committee on Publication Ethics

[www.publicationethics.org.uk](http://www.publicationethics.org.uk)

equator network

**1592** Needle track seeding following biopsy of liver lesions in the diagnosis of hepatocellular cancer: a systematic review and meta-analysis  
*M A Silva, B Hegab, C Hyde, B Guo, J A C Buckels, D F Mirza*

**1597** Host- rather than virus-related factors reduce health-related quality of life in hepatitis C virus infection  
*B Helbling, K Overbeck, J-J Gonvers, R Malinverni, J-F Dufour, J Borovicka, M Heim, A Cerny, F Negro, S Bucher, M Rickenbach, E L Renner, B Mullhaupt, on behalf of the Swiss Hepatitis C Cohort Study*

### JournalScan

**1604** Edited by P Moayyedi

### Recent advances in basic science

**1605** High-throughput diversity and functionality analysis of the gastrointestinal tract microbiota  
*E G Zoetendal, M Rajilić-Stojanović, W M de Vos*

**1616** Pain in chronic pancreatitis: the role of neuropathic pain mechanisms  
*A M Drewes, A L Krarup, S Detlefsen, M-L Malmstrøm, G Dimcevski, P Funch-Jensen*



### PostScript

**1629** Letters

**1634** Corrections

### Gut tutorial

**1529** Non-cirrhotic intrahepatic portal hypertension  
*K Madhu, B Ramakrishna, U Zachariah, C E Eapen, G Kurian*

### Editor's quiz

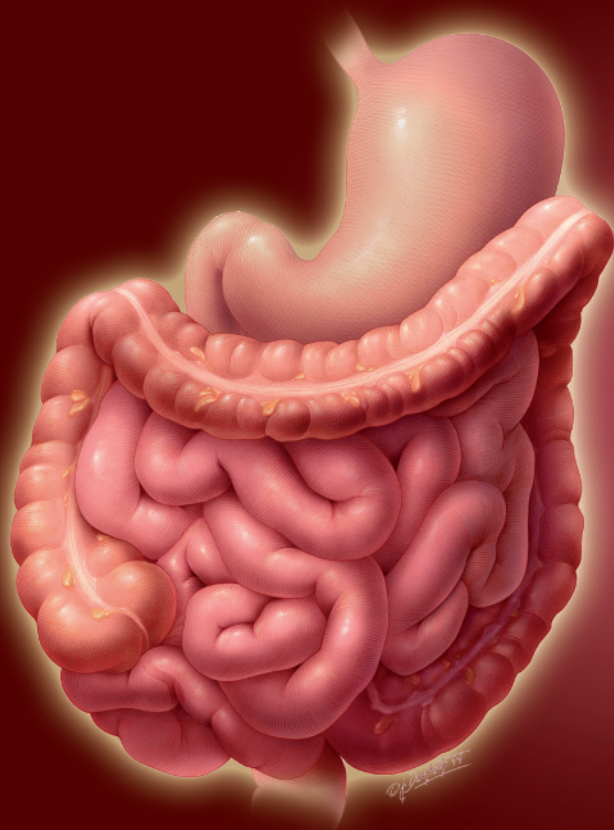
**1486** A rare case of diarrhoea  
*K Alexandropoulou, J O'Donohue*

**1494** A giant cystic lesion in the epigastric region  
*F Yang, J Long, Y Di, D-L Fu, C Jin, Q-X Ni, H-G Zhu*

**1503** A "vanishing" cause of upper gastrointestinal haemorrhage  
*G Iacopini, A De Cesare, F Iacopini, M A Vitale, G Villotti*

**1530** Anaerobic bacteraemia in a patient with necrotising pancreatitis  
*M-L Han, H-F Lin, K-L Liu, T-H Lee, W-C Liao*

**1554** A male patient with ileitis and a calcifying small bowel lesion  
*A Aghdassi, G Richter, P Simon, J Ringel, R Puls, M Evert, U Wahnschaffe*



## Easily digestible research every month

Gut is the premier gastroenterology journal in Europe with an impressive impact factor of 9.02, so you'll want the guarantee of reading it every month.

Why not recommend the journal to your librarian or better still, obtain your own personal subscription? You will receive a paper copy every month as well as online access for **just £181 a year** (€268, \$344). Too much paper on your desk already? An online subscription is **just £99** (€147, \$188).

Visit [group.bmj.com/group/subs-sales](http://group.bmj.com/group/subs-sales) - your subscription to this first class journal is just a few clicks away.

[gut.bmj.com](http://gut.bmj.com)

BMJ Journals