



OPEN ACCESS

## ORIGINAL ARTICLE

# HNF4 $\alpha$ is a therapeutic target that links AMPK to WNT signalling in early-stage gastric cancer

Hae Ryung Chang,<sup>1</sup> Seungyeon Nam,<sup>1</sup> Myeong-Cherl Kook,<sup>2</sup> Kyung-Tae Kim,<sup>3</sup> Xiuping Liu,<sup>4</sup> Hui Yao,<sup>5</sup> Hae Rim Jung,<sup>1</sup> Robert Lemos Jr,<sup>6</sup> Hye Hyun Seo,<sup>7</sup> Hee Seo Park,<sup>1</sup> Youme Gim,<sup>1</sup> Dongwan Hong,<sup>8</sup> Iksoo Huh,<sup>9</sup> Young-Woo Kim,<sup>10</sup> Dongfeng Tan,<sup>11</sup> Chang-Gong Liu,<sup>4</sup> Garth Powis,<sup>6</sup> Taesung Park,<sup>9</sup> Han Liang,<sup>5</sup> Yon Hui Kim<sup>1</sup>

► Additional material is published online only. To view please visit the journal online (<http://dx.doi.org/10.1136/gutjnl-2014-307918>).

For numbered affiliations see end of article.

## Correspondence to

Professor Yon Hui Kim, New Experimental Therapeutics Branch, National Cancer Center of Korea, Ilsan, Gyeonggi-do 410-769, Republic of Korea; yhkim@ncc.re.kr; Professor Han Liang, The University of Texas MD Anderson Cancer Center, Houston TX, 77030, USA; hliang1@mdanderson.org; and Professor Taesung Park, Seoul National University, Kwanak-ro, Kwanak-gu Seoul, 151-742, Republic of Korea; tspark@stats.snu.ac.kr

HRC, SN, and M-CK are equally contributed first authors. TP, HL, and YHK are equally contributed corresponding authors.

Received 26 June 2014  
Revised 10 October 2014  
Accepted 25 October 2014  
Published Online First  
19 November 2014



Open Access  
Scan to access more  
free content



CrossMark

**To cite:** Chang HR, Nam S, Kook M-C, et al. *Gut* 2016;**65**:19–32.

## ABSTRACT

**Background** Worldwide, gastric cancer (GC) is the fourth most common malignancy and the most common cancer in East Asia. Development of targeted therapies for this disease has focused on a few known oncogenes but has had limited effects.

**Objective** To determine oncogenic mechanisms and novel therapeutic targets specific for GC by identifying commonly dysregulated genes from the tumours of both Asian-Pacific and Caucasian patients.

**Methods** We generated transcriptomic profiles of 22 Caucasian GC tumours and their matched non-cancerous samples and performed an integrative analysis across different GC gene expression datasets. We examined the inhibition of commonly overexpressed oncogenes and their constituent signalling pathways by RNAi and/or pharmacological inhibition.

**Results** Hepatocyte nuclear factor-4 $\alpha$  (HNF4 $\alpha$ ) upregulation was a key signalling event in gastric tumours from both Caucasian and Asian patients, and HNF4 $\alpha$  antagonism was antineoplastic. Perturbation experiments in GC tumour cell lines and xenograft models further demonstrated that HNF4 $\alpha$  is downregulated by AMPK $\alpha$  signalling and the AMPK agonist metformin; blockade of HNF4 $\alpha$  activity resulted in cyclin downregulation, cell cycle arrest and tumour growth inhibition. HNF4 $\alpha$  also regulated WNT signalling through its target gene WNT5A, a potential prognostic marker of diffuse type gastric tumours.

**Conclusions** Our results indicate that HNF4 $\alpha$  is a targetable oncoprotein in GC, is regulated by AMPK signalling through AMPK $\alpha$  and resides upstream of WNT signalling. HNF4 $\alpha$  may regulate 'metabolic switch' characteristic of a general malignant phenotype and its target WNT5A has potential prognostic values. The AMPK $\alpha$ -HNF4 $\alpha$ -WNT5A signalling cascade represents a potentially targetable pathway for drug development.

## INTRODUCTION

Gastric cancer (GC) is the fourth most common type of cancer in the world, with 989 000 new cases (7.86% of total global cancers) annually, and 738 000 deaths (9.7% of total global cancer deaths).<sup>1</sup> In East Asia, GC is the most common type of cancer<sup>2–3</sup>; in North America and Europe, while the overall incidence of GC has been decreasing, the prevalence of proximal GC has increased

## Significance of this study

## What is already known on this subject?

- Gastric cancer is the fourth leading cause of cancer death in the world, having an estimated 989 000 new cases of cancer annually, with 738 000 deaths.
- While several risk factors are known (including *Helicobacter pylori* infection, dietary factors and gastric reflux), targeted therapies remain largely undeveloped.

## What are the new findings?

- Integrative analysis of Caucasian and Asian-Pacific gastric tumour expression datasets (including newly generated transcriptomic profiling of 22 tumours in this study) revealed a relatively small common set of highly overexpressed genes. Of those genes, hepatocyte nuclear factor-4 $\alpha$  (HNF4 $\alpha$ ) was one key transcription factor.
- Inhibitory RNA and pharmacological inhibition of HNF4 $\alpha$  demonstrated antineoplastic activity in vitro and in vivo via downregulation of cyclins, cell cycle arrest and apoptosis.
- In agreement with HNF4 $\alpha$  being a known substrate that is downregulated by the AMPK energy-sensing kinase, the AMPK agonist metformin demonstrated an antitumor effect similar to direct HNF4 $\alpha$  antagonists.
- WNT5A is an HNF4 $\alpha$  target gene, thus suggesting that an AMPK-HNF4 $\alpha$ -WNT oncogenic signalling axis is likely to be involved in gastric tumour metabolism.

## How might it impact on clinical practice in the foreseeable future?

- Development of therapies that specifically target the AMPK-HNF4 $\alpha$ -WNT signal cascade would probably represent effective approaches with minimal toxic effects for the management of gastric cancer.

notably.<sup>4</sup> Biologically, gastric adenocarcinomas have been largely associated with two infectious agents, *Helicobacter pylori*<sup>5–6</sup> and Epstein-Barr virus,<sup>7</sup> and

hereditary diffuse GC has been associated with germline mutations of cadherin-1 (CDH1).<sup>8,9</sup>

Surgical removal of early stage GC tumours is key to effective treatment, but because few symptoms accompany early GC, most tumours are found at an advanced stage.<sup>10</sup> GC recurrence rates are high among all populations, and although improved early detection has increased the 5-year survival rate by 67% in Korea<sup>11</sup> and 57% in Japan,<sup>12</sup> the global 5-year survival rate has remained at 20–30% for the past 35 years.<sup>10</sup> Efforts to develop GC-targeted therapies have focused on a few well-known oncogenes. For example, one targeted therapy, trastuzumab, was approved for use in combination with chemotherapy as a first-line treatment of ERBB2-positive advanced and metastatic GC,<sup>13,14</sup> and several other targeted therapies remain under investigation.<sup>15–17</sup> However, there remains an urgent need to identify novel targetable oncogenic mechanisms.<sup>18–20</sup>

To develop more effective GC-specific therapies, we (1) generated whole-transcriptome profiles for GC in Caucasians and identified hepatocyte nuclear factor-4 $\alpha$  (HNF4 $\alpha$ ) as a key component across multiple GC expression datasets; (2) demonstrated that HNF4 $\alpha$  knockdown was anti-tumorigenic in both cell line and animal studies; (3) elucidated the regulatory context of HNF4 $\alpha$  by showing it acts downstream of AMP-activated protein kinase (AMPK) and upstream of wingless-type MMTV integration site (WNT) signalling; and (4) showed the prognostic value of WNT5A, a HNF4 $\alpha$  downstream target gene, in patients with GC. Collectively, our study reveals a critical role of AMPK $\alpha$ -HNF4 $\alpha$ -WNT5A signalling in the pathogenesis of GC, representing a potential therapeutic target.

## MATERIALS AND METHODS

### Sample collection and characterisation

For RNA-seq experiments, tumours were collected from a retrospective study using archival fresh-frozen human tissue specimens obtained from consented patients at the University of Texas MD Anderson Cancer Center Research Resource Tissue Bank (Houston, Texas, USA), as approved by the Institutional Review Board of MD Anderson Cancer Center. Histological classification and tumour stage were determined by a pathologist in the Department of Pathology at MD Anderson. Our analysis included 22 gastric tumours and their matched non-tumour tissues obtained from Caucasian patients who met our study criteria (sufficient amount and quality of RNA). Clinical and histopathological patient characteristics are summarised in online supplementary table S1.

Tissue microarrays were created from tissue samples from patients with GC who underwent gastrectomy and extended lymphadenectomy in 2005 and 2006 at the National Cancer Center in the Republic of Korea, as approved by the Institutional Review Board of the National Cancer Center in the Republic of Korea. Exclusion criteria were as follows: pT1; no R0 resection; distant metastasis (including peritoneal cytology-positive) present before or at the time of surgery; recurrent cancer; neoadjuvant therapy; cancer in remnant stomach; unusual histology other than papillary, tubular, signet ring cell or mucinous type; incomplete follow-up; paraffin-embedded tissues unavailable for tissue microarray; or other cancer history. These exclusions resulted in final datasets of 502 samples (discovery set: 251 cases in 2006, validation set: 251 in 2005). All patients had undergone D1+ $\beta$  or more lymph node dissection. Tumour stages were reclassified according to the 7th edition of the tumour staging system of the Union for International Cancer Control. Case characteristics (see online supplementary

table S3) were determined and reviewed by a pathologist in the National Cancer Center Pathology Division.

To validate loss of AMPK $\alpha$ 2 expression, 10 patient tissue samples per tumour stage were provided as a gift from Dr Hyun Cheol Chung, Cancer Center, Yonsei University Severance Hospital, Republic of Korea.

### Experimental procedure for RNA-seq

RNA-seq was conducted at the Sequencing and Non-coding RNA Core Facility at MD Anderson Cancer Center. RNA isolation, library preparation (paired-end, 50nt and 35nt), template bead preparation and SOLiD V4.0 sequencing followed standard protocols provided by Life Technologies (Carlsbad, California, USA), similar to our previous study.<sup>20</sup> Sequencing data were submitted to the NCBI Gene Expression Omnibus.

### Differential expression analysis

To analyse RNA-seq data from Caucasian patient GC tumours, we mapped short reads to the human reference genome (hg19) and exon junctions (defined as RefSeq gene annotation), using the whole-transcriptome analysis pipeline in the Life Sciences Bioscope (V1.2 Life Technologies) with default parameters. We included only properly mapped read pairs and quantified gene expression levels as reads per kilobase of exons per million mapped reads (RPKM), log-transformed. We used paired *t* tests to detect genes differentially expressed between GC and normal samples, with significance at  $p < 0.05$ . We obtained another three published GC gene expression datasets, two from the NCBI Gene Expression Omnibus: GSE13861 and GSE36968<sup>20,21</sup> and one from TCGA<sup>22</sup> (level 3 data obtained from TCGA data portal). We used *t* tests to detect differentially expressed genes and  $p < 0.0001$ ,  $p < 0.05$  and  $p < 0.001$  as the respective cut-offs. For 396 genes commonly identified across the four differential analyses, we classified them into five groups based on the directional change (upregulation/downregulation relative to normal) and the average fold change: (1) consistent upregulation with  $>2$  fold; (2) consistent upregulation with  $<2$  fold; (3) consistent downregulation with  $>2$  fold; (4) consistent downregulation with  $<2$  fold; and (5) inconsistent change.

### Experiments on biological functions

#### Cells and reagents

We obtained human NCI-N87, AGS and HS 746T tumour cells from the American Type Culture Collection (Manassas, Virginia, USA). The MKN45 GC cell line was made available from Yonsei Cancer Center (Seoul, Korea). SNU-1–5, -16, -620, -216, -484, -601, -638, -668 and SNU-719 GC cell lines were made available from the Korean Cell Line Bank ([http://cellbank\\_snu.ac.kr/](http://cellbank_snu.ac.kr/)). Monoclonal antibodies to human hypoxia-inducible factor 1 $\alpha$  (HIF-1 $\alpha$ ) and  $\beta$ -catenin were purchased from BD Transduction Laboratories (San Jose, California, USA); AMPK $\alpha$ , LKB1, HNF4 $\alpha$ , antiapoptotic antibody kit (tPARP, cPARP, t-caspase 3, c-caspase 3), t-mTOR, p-mTOR (Ser 2448 and Ser2481), raptor, eIF4E, S6,4E-BP1, WNT1, WNT3, GSK,  $\beta$ -catenin, TCF, LEF, pCAMKII, cyclin A, cyclin B, cyclin D1, cyclin D2 and  $\beta$ -actin were purchased from Cell Signaling Technologies (Boston, Massachusetts, USA) or Santa Cruz Biotechnology (Santa Cruz, California, USA). Antibodies against WNT5A, GSK,  $\beta$ -catenin, pCAMKII, cyclin D2, cyclin D1, cyclin A and cyclin B were purchased from Abgent (San Diego, California, USA), and metformin and puromycin were purchased from Sigma-Aldrich (St Louis, Missouri, USA). SBI-0634689.0001 (BI6015, an HNF4 $\alpha$  antagonist) was provided by the Sanford-Burnham Medical Institute (La Jolla, California, USA).

### Cell culture

The following human GC cell lines were used within 6 months of tissue resuscitation: NCI-N87, AGS, HS 746T, MKN45, SNU-1, SNU-5, SNU-16, SNU-620, SNU-216, SNU-484, SNU-601, SNU-638, SNU-668 and SNU-719, and cultured in RPMI-1640 (CellGro, Herndon, Virginia, USA) and 10% fetal calf serum (Hyclone, Logan, Utah, USA) at 37°C in 5% CO<sub>2</sub>. Cell line validation was by short tandem repeat profiling (ATCC). Cells ( $2.5 \times 10^5$ ) were seeded and grown under normoxic conditions to 70–80% confluence and then incubated in the presence or absence of 10 mM metformin for 0–5 days.

### Western blotting

Cells grown under normoxic conditions in the presence or absence of 10 mM metformin were washed twice in phosphate-buffered saline and western blotting was conducted as previously described.<sup>23</sup> Antibody-bound blots were quantified using ImageQuant software (Molecular Dynamics/GE Healthcare Biosciences, Sunnyvale, California, USA).

### Quantitative RT-PCR

Total RNA was isolated from cell lysates using PARIS kits (Ambion/Applied Biosystems, Foster City, California, USA) according to the manufacturer's protocol. Next, quantitative RT-PCR was performed using an ABI 7300 system and TaqMan one-step Master Mix kit and predesigned primer/probe pairs for AMPK $\alpha$ 1, AMPK $\alpha$ 2, AMPK $\beta$ 1, AMPK $\beta$ 2, AMPK $\gamma$ 1, AMPK $\gamma$ 2, AMPK $\gamma$ 3, LKB1, HNF4 $\alpha$  and  $\beta$ <sub>2</sub>-microglobulin (Applied Biosystems). Relative expression levels were normalised to  $\beta$ <sub>2</sub>-microglobulin using the  $2^{-\Delta\Delta C(T)}$  method<sup>24</sup> and Applied Biosystems GeneAmp 5700 SDS software. All measurements were performed in triplicate.

### Small interfering RNA transfection

Small interfering RNA (siRNA) SMARTpool (set of four oligonucleotides) (Dharmacon/Thermo Fisher Scientific (Waltham, Massachusetts, USA) were used to transfect cells at 25 nM siRNA-HNF4 $\alpha$  or a siRNA scrambled control, using DharmaFECT 1 lipid transfection reagent. The transfection medium was removed after 24 h and replaced with fresh medium and the cells then grown in 5% CO<sub>2</sub> at 37°C for an additional 48–72 h. RT-PCR and/or western blot analyses were performed to confirm target knockdown by siRNA.

### Short hairpin RNA silencing

Short hairpin RNAs (shRNAs) (Sigma-Aldrich) were used to stably infect NCI-N87 GC cells (shRNA empty vector or HNF4 $\alpha$ ) plated in 12-well plates and maintained in RPMI 1640 plus 10% fetal bovine serum (FBS), with selection by 0.3 mg/mL puromycin.

### Cell death assays

Five GC cell lines (AGS, N87, NCC19, NCC59 and SNU1967) were grown under the conditions described above. For assaying autophagy, a Cyto-ID Autophagy detection kit (Enzo Life Sciences, Farmingdale, New York, USA) was used according to the manufacturer's protocol. For assaying apoptosis, an Annexin V: PE Apoptosis detection Kit I (BD Biosciences, Franklin Lakes, New Jersey, USA) was used according to the manufacturer's protocol. FACSVerse (BD Biosciences) was used for flow cytometry analysis.

### Reporter (Luciferase) assay

In the study, 96-well plates were seeded with 20 000 cells/well and transiently transfected with 25 nM scrambled or HNF4 $\alpha$  siRNA. TCF/LEF-responsive luciferase construct, HNF4 $\alpha$ , TCF/LEF, negative control and positive control genes were transfected, respectively (QIAGEN Sciences, Gaithersburg, Maryland, USA). Transfected cells were then treated with 10  $\mu$ M metformin for 24–72 h. The positive control was a constitutively expressed green fluorescent protein (GFP) construct and the negative control was a minimal promoter GFP reporter. This assay was performed on MKN45, NCI-N87, NCC19, NCC59, NCC24 and SNU1967 GC cells. After transfection for 24, 48 and 72 h, cells were lysed with passive lysis buffer and transferred to 96-well white opaque flat bottom plates. Luciferase activity was measured using a Dual-Luciferase reporter assay system (Promega, Madison, Wisconsin, USA) and VICTOR Light (Perkin Elmer, Wallac, Turku, Finland).

### In vivo antitumor study

Approximately  $10^7$  NCI-N87 and MKN45 cells in log growth phase were suspended in 0.2 ml phosphate buffered saline and subcutaneously injected into the flanks of severe combined immunodeficient (*scid*) mice. The animals were weighed weekly and tumour diameters measured twice weekly at right angles ( $d_{\text{short}}$  and  $d_{\text{long}}$ ) with electronic calipers and converted to volume by the formula  $\text{volume} = [(d_{\text{short}})^2 \times (d_{\text{long}})]/2$ . When the tumours reached volumes between 150 and 300 mm<sup>3</sup>, the mice were stratified into two groups of eight animals with approximately equal mean tumour volumes, followed by metformin treatment at 250 mg/kg orally daily for 25 days<sup>20</sup>. Control animals received vehicle (water) alone. Twenty-four hours after the final metformin administration, tumours were collected for western blot analysis and immunohistochemistry to assess the expression of HNF4 $\alpha$  and WNT5A. When tumours reached  $\geq 1500$  mm<sup>3</sup> or became necrotic, the animals were killed. All animal studies were approved by the National Cancer Center IRB Animal Committee.

### Immunohistochemistry

#### Patient tumour samples

H&E-stained slides were reviewed and representative areas selected for tissue microarray. Normal mucosa and cancer tissues were selected, respectively. Cores 2 mm in diameter were taken from archival paraffin-embedded blocks using a trephine apparatus (Superbiochips Laboratories, Seoul, Republic of Korea). Tissue microarray blocks were sectioned at 3  $\mu$ m thickness, dried for 1 h at 56°C, and immunohistochemical staining performed with the automated instrument BenchMark XT (Ventana Medical Systems, Tucson Arizona, USA) as follows: sections were deparaffinised and rehydrated with EZ Prep (Ventana) and washed with Tris-buffered saline. The antigens were retrieved by heat treatment in pH 8.0 Tris-EDTA buffer (Cell-Conditioning Solution, Ventana) at 95°C for 30 min for WNT5A. Endogenous peroxidases were blocked with 3% H<sub>2</sub>O<sub>2</sub> for 10 min at room temperature. Blocking was performed with a ready-to-use protein blocker solution (Ventana) for 20 min at room temperature, followed by application of primary antibody at 42°C (WNT5A for 30 min at 1:5000 dilution (clone 6F2, Abgent, San Diego, California, USA, AO1264a), washing, incubation with HRP multimer-labelled secondary antibody (ultraView Universal DAB detection kit, Ventana) for 20 min at room temperature and staining using ultraView universal DAB kits (Ventana) for 8 min (with haematoxylin counterstain).



### Mouse xenograft model

Immunohistochemical staining was performed on 4 µm tissue sections from paraffin embedded tissue blocks in the automated staining instrument Discovery XT (Ventana Medical Systems) using the Chromomap DAB Detection kit. For detection, anti-HIF-1α antibody (Abcam, Cambridge, UK), anti-cleaved caspase-3 (Cell Signaling Technology, Danverse, Massachusetts, USA), anti-Ki-67 (Abcam) and anti-CD31 (Abcam) were used. For grading, an H-score was determined for Ki-67, cleaved caspase-3 and HIF-1α.

### Interpretation of immunohistochemistry

#### Patient tumour samples

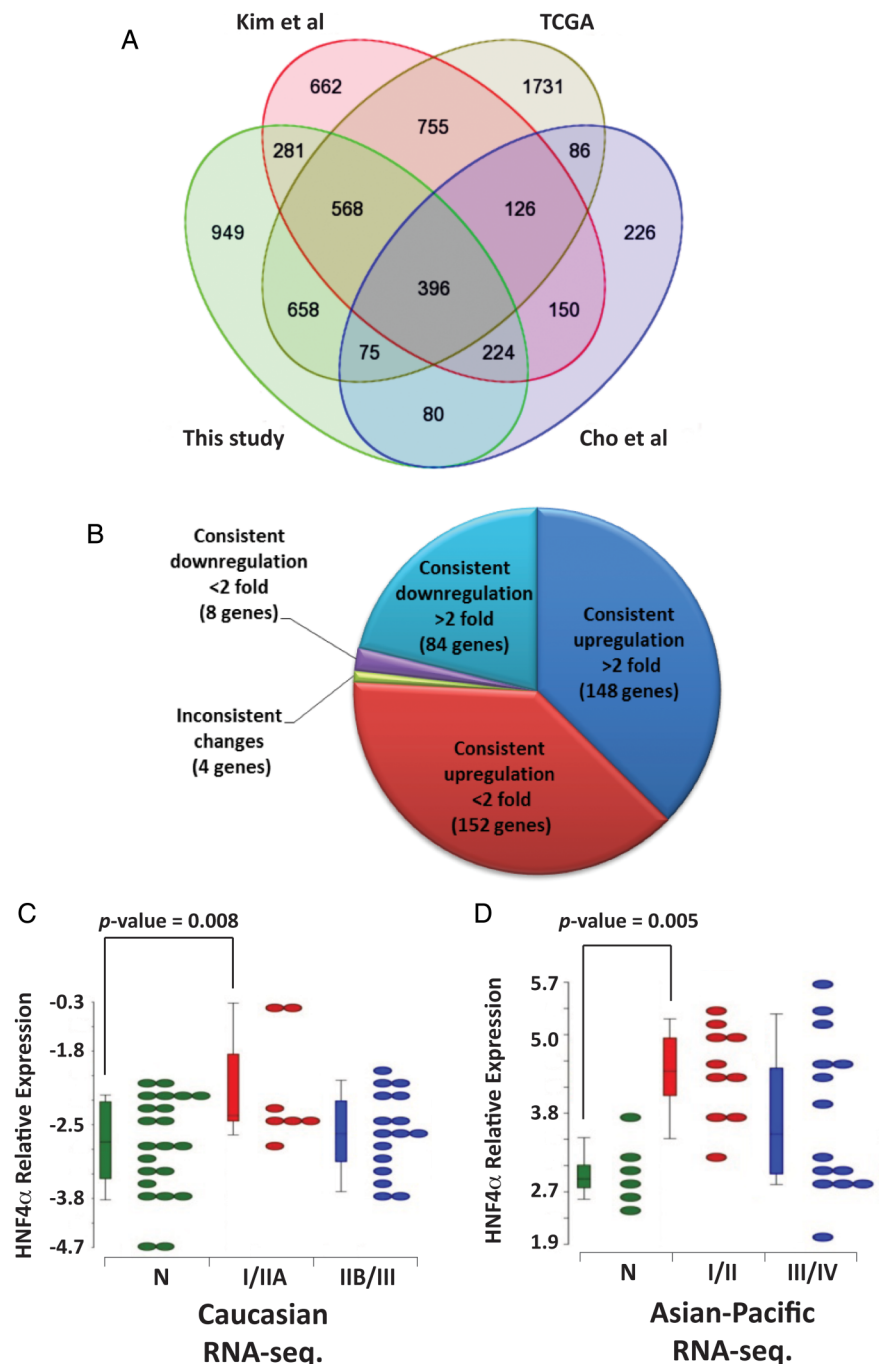
We defined the intensity of WNT5A tissue staining as follows: (A) no signal or only a faint equivocal signal observed at 100× power was regarded as negative, 0; (B) >10% of tumour cells

showing clear cytoplasmic signals at 100× power (similar to foveolar epithelial cells) was regarded weakly positive, +1; (C) if >10% of tumour cells showed obviously stronger signals with 40× power (similar to chief cells or the plasma cells for WNT5A), it was regarded as strongly positive, +2. We measured WNT5A positivity by the percentage of weakly or strongly positively staining tumour cells, scored as 0 (negative) if weakly or strongly positive cells were ≤50% and 1 (positive) if >50%. We used a log-rank test to examine the correlation between WNT5A levels and patient survival.

### Mouse xenograft model

Immunohistochemical staining was graded as follows: intensities were graded (0=negative, 1=weak, 2=moderate, 3=strong) and the percentages of positive cells were taken to calculate the H-score, as follows: H-score=3×percentage of strongly staining

**Figure 1** Differential expression analysis across multiple transcriptome-wide expression datasets. (A) Venn diagram of differentially expressed genes identified from the four expression datasets. (B) Classification of 396 genes into five groups: consistent upregulation with >2 fold; consistent upregulation with <2 fold; consistent downregulation with >2 fold; consistent downregulation with <2 fold; inconsistent changes. Differential expression of HNF4α in (C) Caucasian and (D) Asian RNA-seq datasets, respectively. Caucasian RNA-seq includes normal versus tumour stages I, II and III tissue samples. Asian RNA-seq includes normal versus tumour stages I, II, III and IV tissue samples.



cell(s)+2×percentage of strongly staining cell(s)+1×percentage of strongly staining cell(s), yielding a range of 0–300. For microvascular density (MVD) counting, microvesicles were stained using CD31 staining, with five fields chosen and counted at ×200.

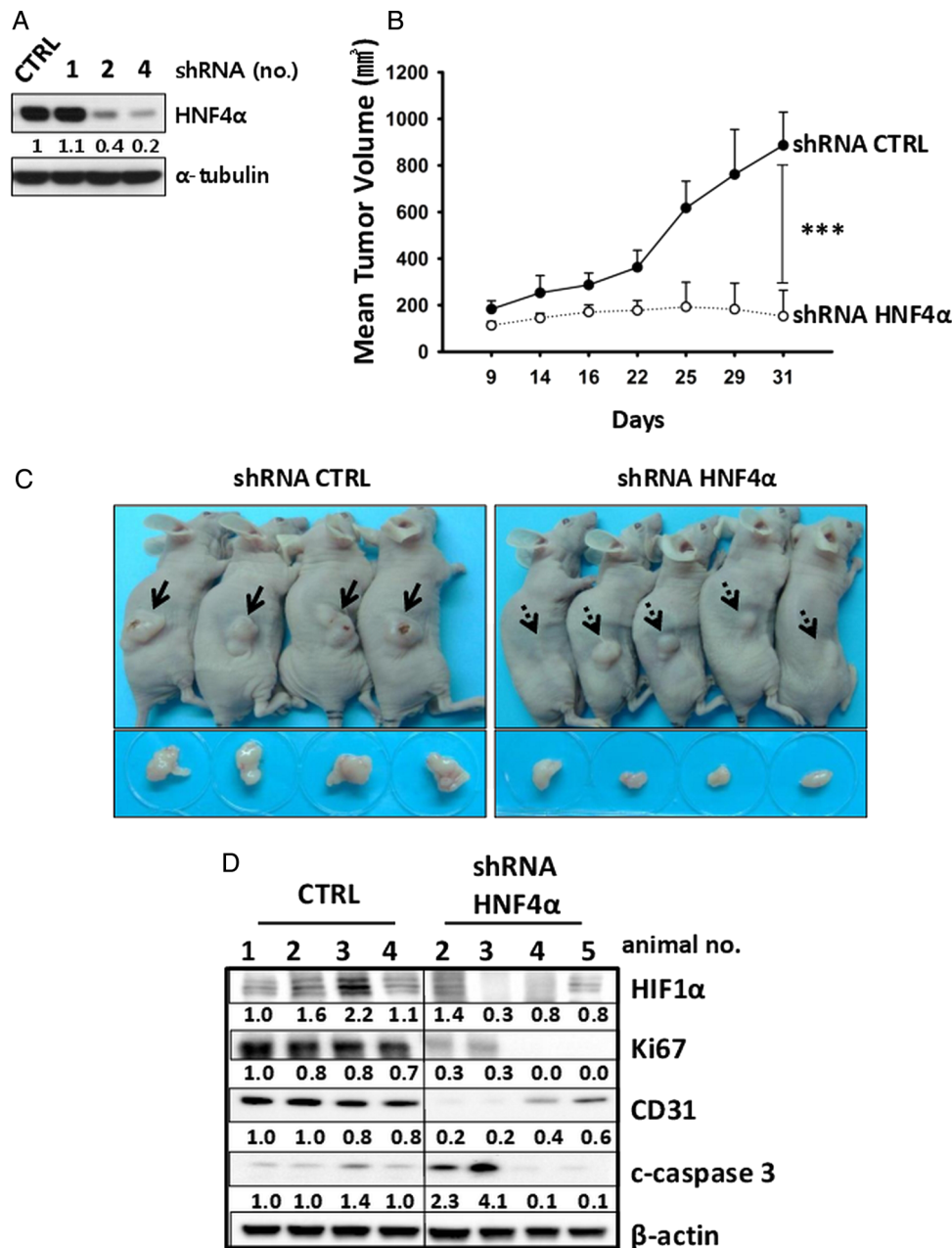
### Statistical analysis

For individual gene experiments, *p* values <0.05 were considered statistically significant, based on a Student *t* test or *z*-test, for comparisons of the experimental groups with control groups.

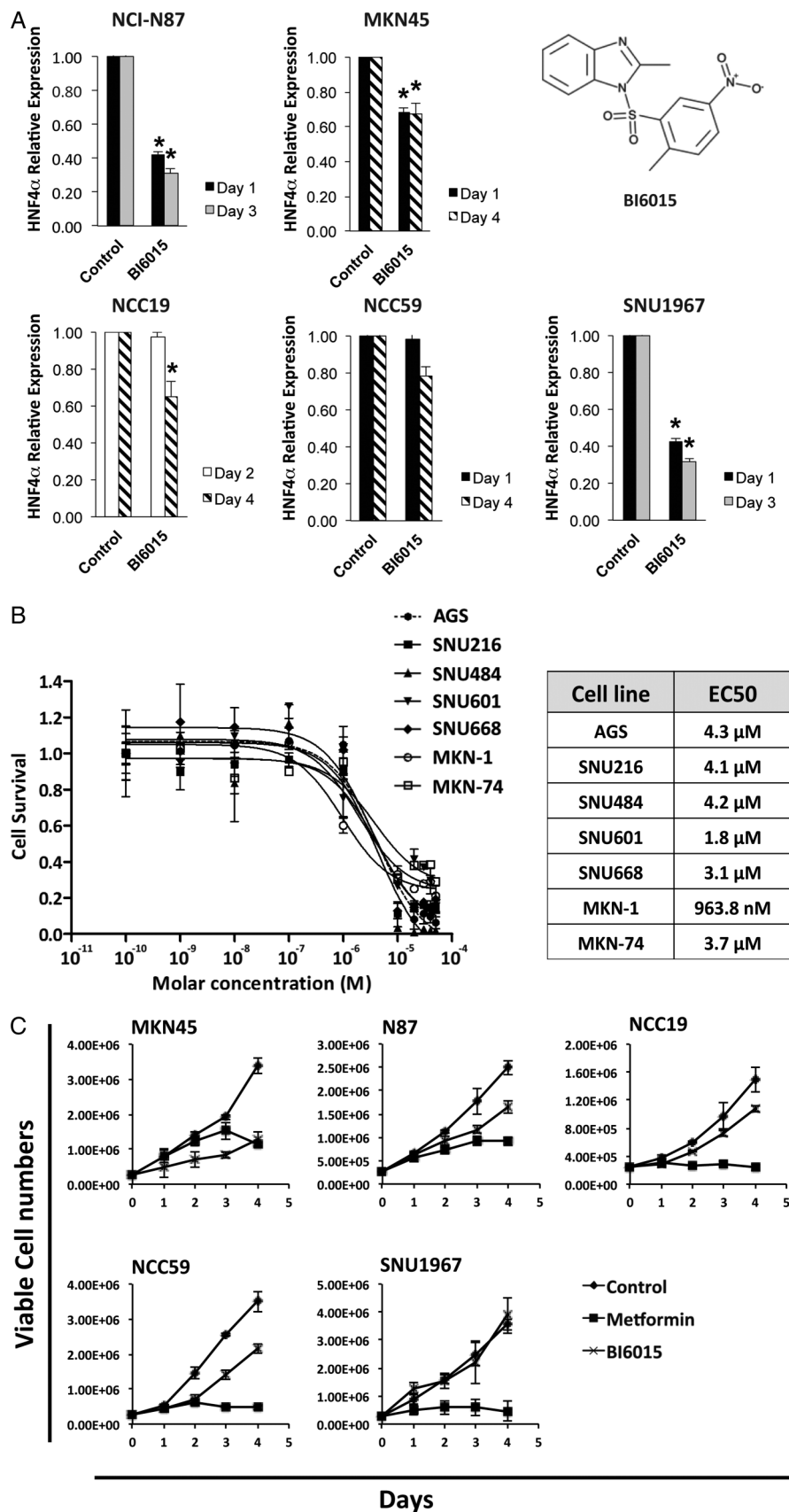
### RESULTS

#### Integrative transcriptomic analysis suggests HNF4 $\alpha$ as a key signal mediator in GC

To comprehensively view the GC transcriptome in Caucasians, we performed whole-transcriptome profiling of 22 gastric tumours (and their matched normal tissues) using paired-end RNA-seq (Life Technologies SOLiD platform). Samples included stages I–III tumours from the distal, proximal, gastro-oesophageal junction and body regions of the stomach (see online supplementary table S1). On average, we obtained 53 million and 49 million properly



**Figure 2** Hepatocyte nuclear factor-4 $\alpha$  (HNF4 $\alpha$ ) inhibition shows antitumour activities. (A) A pool of five (short hairpin RNA) shRNA lentiviral particles targeting different regions of the HNF4 $\alpha$  mRNA transcript and shRNA empty vectors was infected into NCI-N87 gastric cancer (GC) cells. Stably transfected cells were selected by puromycin, and clones 2 and 4 showed loss of HNF4 $\alpha$  by immunoblotting. (B, C) Nine 5-week-old female BALB/C nude mice were randomly divided into two groups (4 shRNA control, 5 shRNA HNF4 $\alpha$ ). Approximately  $10^7$  shRNA control (CTRL) and HNF4 $\alpha$  (#2 and #4) shRNA-infected NCI-N87 cells in 100  $\mu$ L phosphate-buffered saline were inoculated subcutaneously. All animals were sacrificed on day 31 after injection. \*\*\**p*<0.001. (D) Immunoblotting shows antiproliferative activity with loss of hypoxia-inducible factor 1 $\alpha$  (HIF-1 $\alpha$ ) from HNF4 $\alpha$  shRNA-transduced xenograft model tumours.



**Figure 3** Effect of the hepatocyte nuclear factor-4 $\alpha$  (HNF4 $\alpha$ ) antagonist BI6015 on gastric cancer (GC) cell lines. (A) Expression of HNF4 $\alpha$  in GC cell lines treated with or without BI6015 using quantitative RT-PCR (\* $p$ <0.05) as well as the molecular structure of BI6015. (B) EC<sub>50</sub> growth inhibition values of BI6015 in various GC cell lines. (C) BI6015 shows different levels of growth inhibition on five GC cell lines.

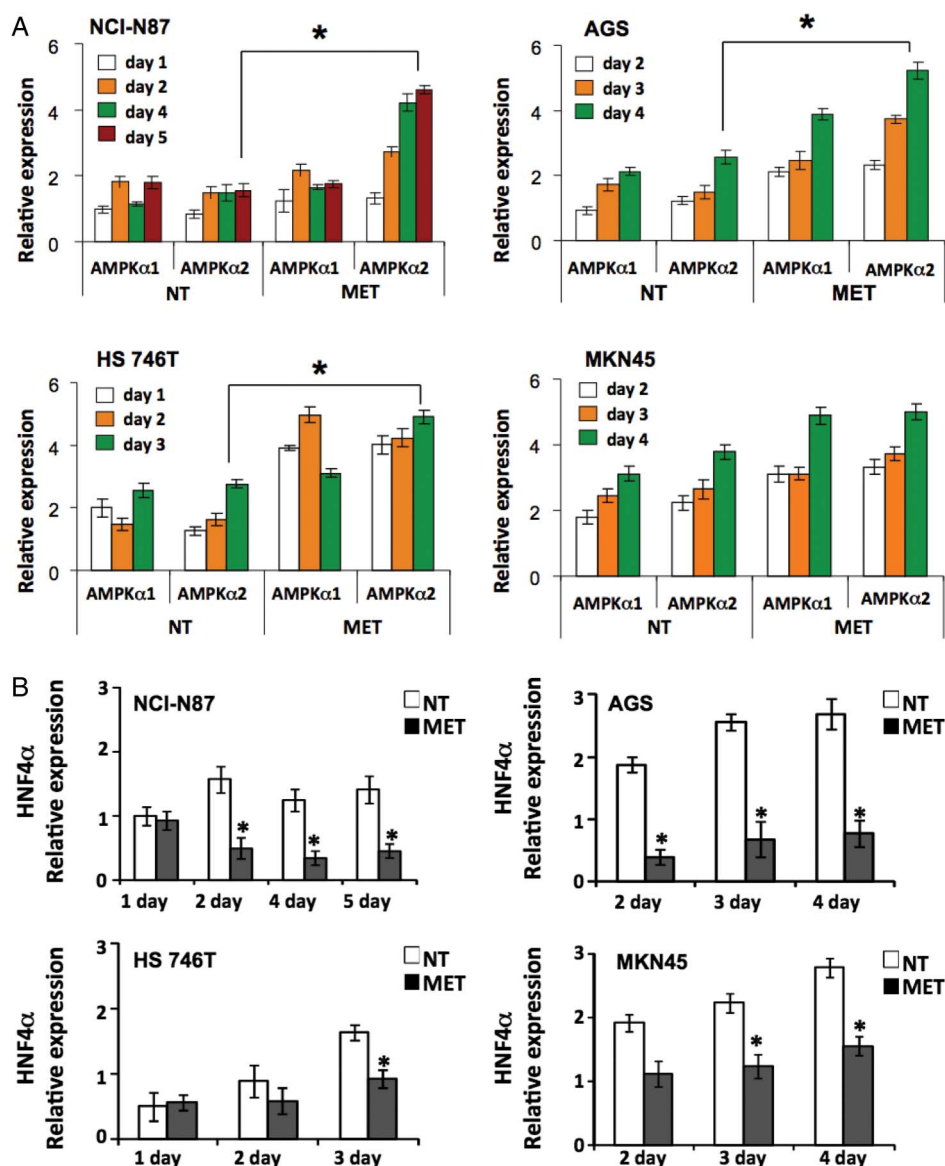
paired short reads per tumour and normal tissue, respectively. Based on these mapped reads, we quantified the expression levels of 15 987 protein-coding genes.

To identify a robust gene signature of GC pathobiology across different populations, we integrated our Caucasian RNA-seq dataset with three other gene expression datasets previously collected from patients with GC<sup>20–22</sup> (see online supplementary table S2). Across the four datasets, the expression levels of 12 587 genes were simultaneously measured, and we performed a differential expression analysis to identify those having significantly differential expression (see Materials and Methods). As shown in figure 1A, 396 genes were consistently identified as misexpressed by the four differential expression analyses. To identify genes showing the change direction (ie, upregulation or

downregulation relative to those non-tumour samples) and the fold change, we classified them into five groups (figure 1B).

To identify novel therapeutic targets we focused on the group that was consistently upregulated across the four analyses by >2 fold. Among the 148 genes, HNF4 $\alpha$  appeared to be an interesting candidate. It is a key member of the nuclear receptor superfamily of ligand-dependent receptors and has been suggested to play a role in the development of colon, liver, pancreatic and lung cancers,<sup>8 25 26</sup> and is highly expressed in intestinal type GC.<sup>27</sup> Figure 1C and D show elevated expression of HNF4 $\alpha$  in GC tumours from both Caucasian and Asian-Pacific patients. Given its robust expression and role as a transcriptional factor, we subsequently investigated HNF4 $\alpha$  as a key regulator in the initiation and progression of GC.

**Figure 4** AMP-activated protein kinase (AMPK $\alpha$ ) activation and hepatocyte nuclear factor-4 $\alpha$  (HNF4 $\alpha$ ) inhibition by metformin show antiproliferation activity in gastric cancer (GC) cell lines. (A) Expression of AMPK $\alpha$ 1 and AMPK $\alpha$ 2 in four GC cell lines (NCI-N87, AGS, HS 746T and MKN45), with and without metformin treatment, as measured by quantitative RT-PCR (\* $p$ <0.05). For NCI-N87, white bars=day 1, orange bars=day 2, green bars=day 4, red bars=day 5; for AGS and MKN45, white bars=day 2, orange bars=day 3, green bars=day 4; and for HS 746T, white bars=day 1, orange bars=day 2, green bars=day 3. (B) Expression of HNF4 $\alpha$  in four GC cell lines, with and without metformin treatment (white bars=non-treated (NT), black bars=metformin-treated (MET)), as measured by quantitative RT-PCR (\* $p$ <0.05). (C) Growth inhibition observed in 10 GC cell lines (NCI-N87, AGS, HS 746T, MKN45, SNU-1, SNU-16, SNU-620, NCC59, NCC19 and SNU1967) following metformin treatment (squares=non-treated (NT), diamonds=metformin-treated (MET)). Cells were counted from the onset of metformin treatment (day 0) (\* $p$ <0.05). (D) Metformin mechanism of action through AMPK $\alpha$  activation and HNF4 $\alpha$  inhibition, resulting in G<sub>2</sub>/M arrest and antiproliferation of GC cell lines. Two GC cell lines (NCI-N87 and AGS) were treated with metformin and cells were fixed and analysed for DNA content using propidium iodide and flow cytometry. Metformin-treated cells were compared with non-treated cells. The percentage of cells in each cell cycle stage was calculated. Cell cycle arrest in the G<sub>2</sub>/M phase was observed following metformin treatment. (E) Immunoblotting shows the expression levels of cyclins A, B and D1.  $\beta$ -actin was used as control. Decreased cyclin D1 levels were apparent in both NCI-N87 and AGS cell lines upon metformin treatment.





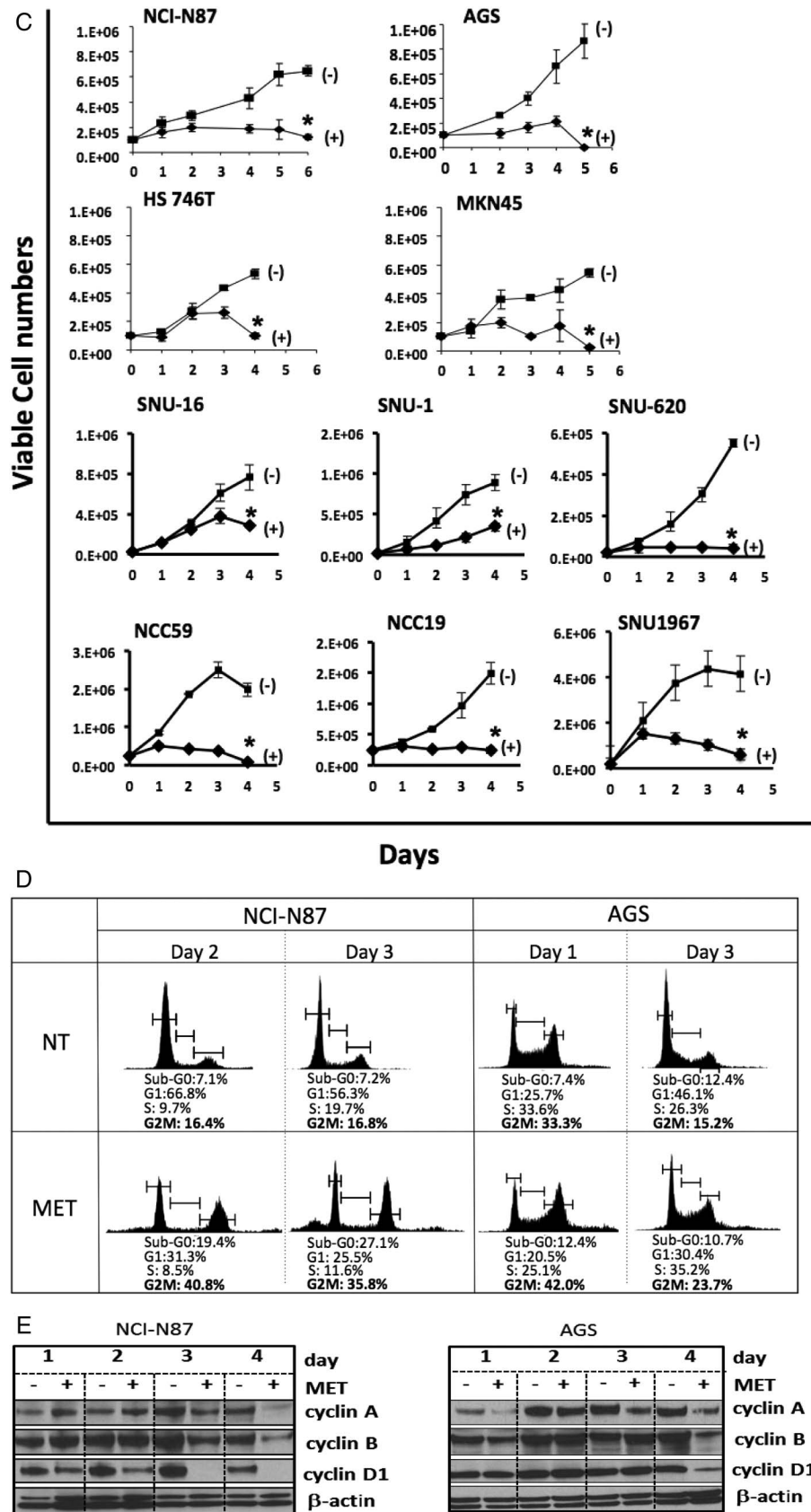


Figure 4 Continued

**HNF4α inhibition shows anti-tumour activity**

To examine its neoplastic function, we performed shRNA-mediated HNF4α knockdown in NCI-N87 mouse

xenografts. Using an effective shRNA (clone no 4, [figure 2A](#)), we found that the shRNA inhibition greatly reduced tumour growth compared with controls ([figure 2B, C](#)). As shown in



figure 2D and supplementary figure S1A, HNF4 $\alpha$  knockdown inhibited growth and angiogenesis, coincident with reduced HIF-1 $\alpha$ . Further, we silenced HNF4 $\alpha$  by siRNA in NCI-N87 GC cells. As shown in supplementary figure S1B, siRNA-mediated HNF4 $\alpha$  knockdown also downregulated the cell cycle regulators cyclins A, B and D1. On days 2 and 3, respectively, we observed 62% and 68% silencing of HIF-1 $\alpha$ , a regulator of cell cycle progression, glucose metabolism and angiogenesis.<sup>28</sup> In addition, we performed shRNA-mediated HNF4 $\alpha$  knockdown in MKN45 mouse xenografts and confirmed greatly reduced tumour growth compared with controls (see online supplementary figure S2A and S2B).

To further evaluate HNF4 $\alpha$  as a therapeutic target, we showed the HNF4 $\alpha$  antagonist BI6015 to variably inhibit HNF4 $\alpha$  expression in a panel of GC cell lines (figure 3A) while effectively reducing GC cell survival (EC<sub>50</sub> values ranging from 964 nM to 4.3  $\mu$ M, figure 3B). Therefore, pharmacological inhibition elicited the same effects as transcript-specific targeting (shRNA), which suggests the drug was specific for HNF4 $\alpha$  and not non-specifically toxic (figure 3C). These results strongly suggest that HNF4 $\alpha$  is a key GC signal mediator, representing a promising therapeutic target.

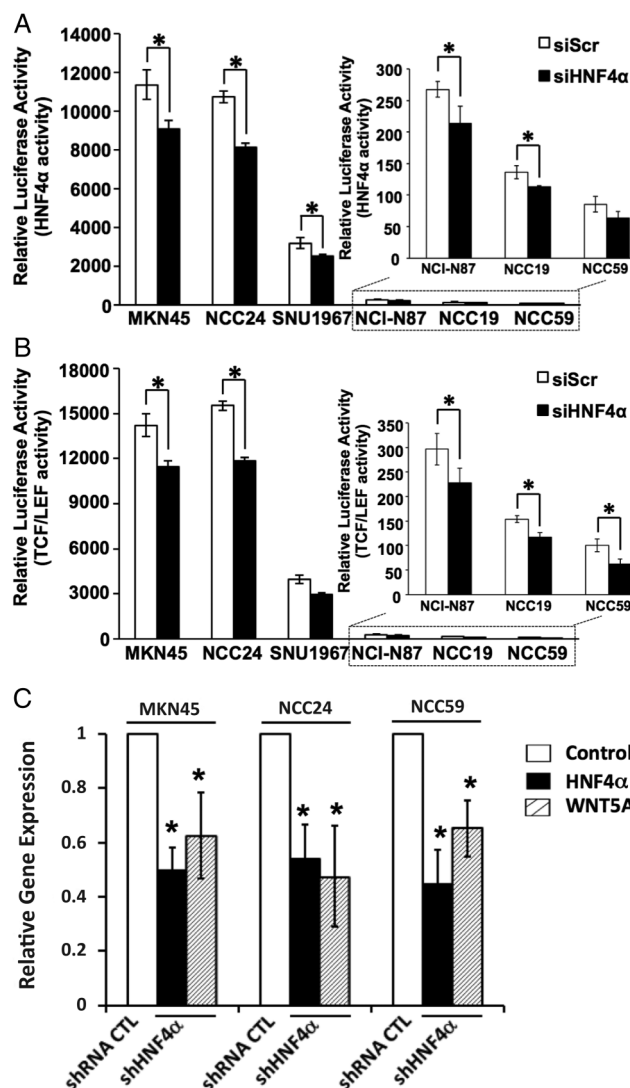
#### HNF4 $\alpha$ is downstream of AMPK $\alpha$ and is modulated by the AMPK agonist metformin

We next examined how HNF4 $\alpha$  is regulated in GC by specifically focusing on AMPK $\alpha$ 2, a key member of the AMPK family that maintains energy balance and is downregulated in primary breast and ovarian cancers.<sup>29</sup> We recently reported that AMPK $\alpha$ 2 is a potential tumour suppressor in Asian-Pacific patients with GC, having clear mRNA loss in early stage tumours compared with normal tissues or advanced tumours.<sup>20</sup> Importantly, HNF4 $\alpha$  has been suggested as a downstream target of AMPK $\alpha$  signalling.<sup>30, 31</sup> For example, Ribeiro *et al* showed that AMPK directly phosphorylates HNF4 $\alpha$  Ser304 in its ligand-binding domain, inhibiting dimerisation and DNA binding.<sup>31, 32</sup>

Based on an independent set of gastric tumours (n=10 samples per stage group), we confirmed loss of AMPK $\alpha$ 2 expression in early stage tumours (t test, p=0.025, see online supplementary figure S3A). Through RNA-seq analysis across different tumour stages we found that, in both Caucasian and Asian-Pacific patients, HNF4 $\alpha$  and AMPK $\alpha$ 2 showed opposite mRNA expression patterns: such anticorrelation (upregulation of HNF4 $\alpha$  and loss of AMPK $\alpha$ 2) was stronger in early stage tumours than in late stage tumours (figure 1C, D, see online supplementary figures S3B and S3C). Given this negative correlation of AMPK $\alpha$ 2 and HNF4 $\alpha$  expression, we examined a possible mechanistic connection between the two genes. First, we confirmed AMPK $\alpha$ 2 protein expression in a panel of GC cell lines and xenograft tissues (see online supplementary figures S4A and S4B, respectively) and, second, we found that HNF4 $\alpha$  protein expression varied among GC cell lines (see online supplementary figure S4C).

To examine the interaction between AMPK $\alpha$ 2 and HNF4 $\alpha$ , we used metformin (an AMPK activator) to treat four GC cell lines (NCI-N87, AGS, HS746T and MKN45). As expected, metformin activated the tumour suppressing liver kinase B1 (LKB1), an upstream regulator of AMPK,<sup>33</sup> in these cell lines (see online supplementary figure S5). Metformin treatment also increased AMPK $\alpha$ 2 expression levels (figure 4A) and decreased HNF4 $\alpha$  expression (figure 4B) in GC cells, suggesting that AMPK activation may downregulate HNF4 $\alpha$ . To investigate possible anticancer effects of metformin-mediated HNF4 $\alpha$  inhibition, we assessed the viability of 10 GC cell lines after metformin

treatment, including the four abovementioned cells and another six cell lines (SNU-1, SNU-16 and SNU-620; and three human GC cell lines newly established from Korean patient primary tumours, NCC-19, NCC-59 and SNU-1967). We observed strong growth inhibition in all 10 GC cell lines (figure 4C) following perturbation of AMPK $\alpha$ -HNF4 $\alpha$  signalling by metformin. The levels of cleaved caspase 3 (c-caspase 3) and poly ADP-ribose polymerase (cPARP) decreased upon metformin treatment, indicating that apoptosis is not the only cause of growth inhibition (see online supplementary figure S6). In our GC panel cell lines we observed G2/M arrest and suppression of cyclins A, B and D1 (figure 4D and E), and additionally detected increased sub-G0 populations (see online supplementary figure S7). Next, we performed apoptosis and necrosis analysis using flow cytometry and detected various apoptotic effects



**Figure 5** Effects of hepatocyte nuclear factor-4 $\alpha$  (HNF4 $\alpha$ ) knockdown on WNT5A in gastric cancer (GC). (A) Monitoring of HNF4 $\alpha$  activity through HNF4 $\alpha$  reporter luciferase assay under siRNA-HNF4 $\alpha$  in six GC cell lines (diffuse type: SNU1967 and NCC24; intestinal type: NCC19 and NCC59) (\*p<0.05). (B) Monitoring of WNT signal pathway activity through TCF/LEF reporter luciferase assays following siRNA-HNF4 $\alpha$  knockdown in six GC cell lines (\*p<0.05). (C) Suppression of WNT5A mRNA expression levels by negative control (white bars), HNF4 $\alpha$  shRNA (black bars) or WNT5A (line filled bars) in three GC cell lines.

in a few GC cell lines (see online supplementary figure S8). Moreover, no autophagy was detected upon metformin treatment (data not shown). Overall, these results indicate that HNF4 $\alpha$  is downstream of AMPK $\alpha$ , and the antiproliferation effect of metformin is largely due to HNF4 $\alpha$  inhibition-induced cell cycle arrest, although we did see some induction of cell death.

### WNT5A is a target gene of HNF4 $\alpha$ with potential prognostic value

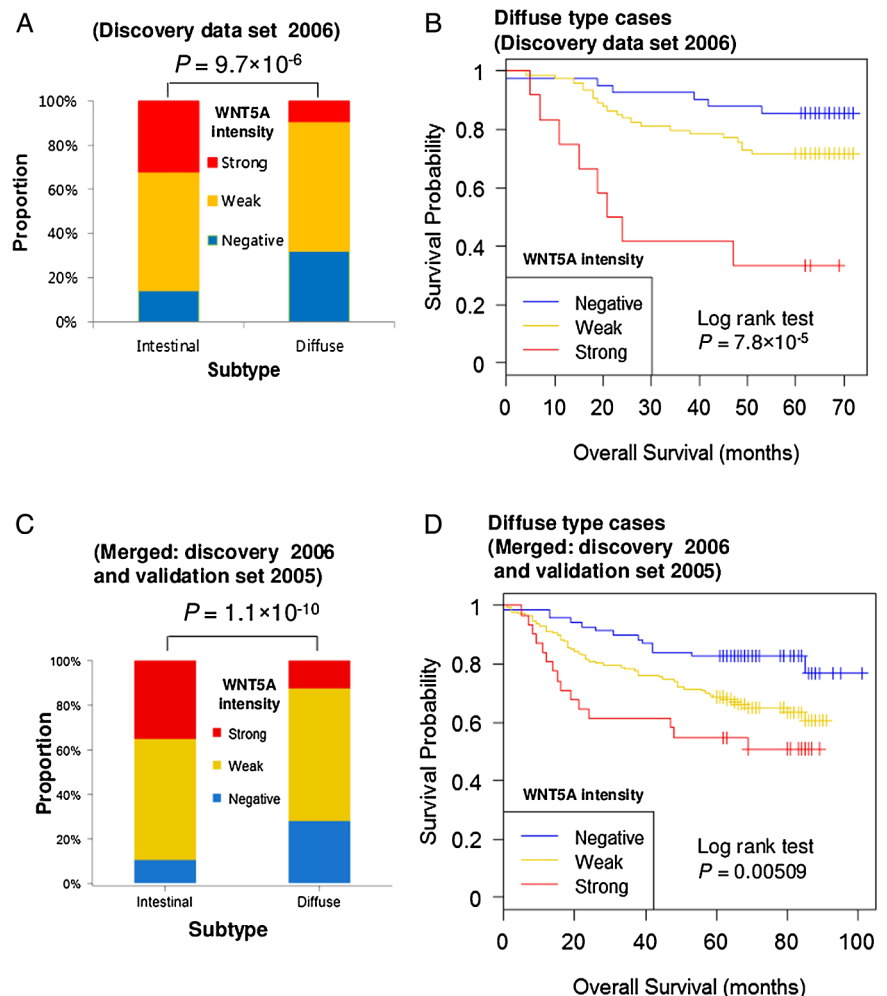
We recently reported WNT5A as a direct target gene of HNF4 $\alpha$  in GC.<sup>34</sup> For further confirmation, we silenced HNF4 $\alpha$  using siRNA in six GC cell lines (NCI-N87, MKN45, NCC19, NCC24, NCC59 and SNU1967) and performed TCF/LEF reporter luciferase assays to monitor WNT signalling. In concert with silencing of HNF4 $\alpha$  (figure 5A), five of the six GC cell lines showed significant suppression of TCF/LEF (figure 5B) and three GC cell lines (MKN45, NCC24 and NCC59) showed downregulation of WNT5A (figure 5C) under HNF4 $\alpha$  shRNA knockdown.

To explore the clinical relevance of WNT5A, we performed immunohistochemical staining in two cohort (251 discovery set and 251 validation set) cases of advanced GC obtained from Asian-Pacific patients (clinical characteristics summarised in online supplementary table S3). Figure 6A shows representative results of WNT5A immunostaining of GC tumours of the merged two-cohort study. In non-neoplastic tissues, the neck area of gastric glands and whole length of intestinal metaplastic

glands were positive for WNT5A. Overall, WNT5A expression was observed in 195 (77.7%) and 214 (85.3%) samples in the discovery and validation sets, respectively. High expression (intensity 2+) was observed in 57 (22.7%) and 68 (27.1%) samples. The relationships between WNT5A intensity and various clinical variables are provided in online supplementary table S3. Interestingly, WNT5A showed high expression levels in Lauren intestinal type GC (figure 6A, B, ANOVA test,  $p=9.7\times10^{-6}$ ), while negative WNT5A staining levels correlated with diffuse type GC, a relationship maintained in both the validation and merged sets (figure 6C, D and see online supplementary table S4). In the discovery case set (2006), higher expression of WNT5A related to older age and more advanced cancer status (deeper invasion and increased nodal metastasis); however, these relationships were not present in the validation set (see online supplementary table S4 and S5 and supplementary figure S9). These inconsistencies could be caused by the variability of the immunohistochemical stains or the differences between the two cohorts.

WNT5A expression levels showed no prognostic significance when analysed for all the cases (see online supplementary figures S10A and C) without regard to Lauren type. However, when the cases were separated into Lauren types, strong intensity of WNT5A was associated with worse overall survival in the diffuse GC type (log rank test  $p=7.8\times10^{-5}$ , figure 6B) of the discovery cohort. While we could not show this association repeatedly in the validation cohort (see online supplementary figure S11A and supplementary table S5), the association with worse overall survival was still present in the merged set (figure 6D).

**Figure 6** WNT5A is a potential prognostic marker in gastric cancer (GC) of the diffuse type. (A) WNT5A shows a strong bias with regard to the Lauren types in discovery data set (2006). (B) Kaplan–Meier plot showing correlation of WNT5A intensity with patient overall survival in the diffuse type in the discovery dataset (2006). (C, D) Merged (discovery data set 2006 and validation data set 2005) dataset shows WNT5A as a prognostic marker of diffuse type GC.

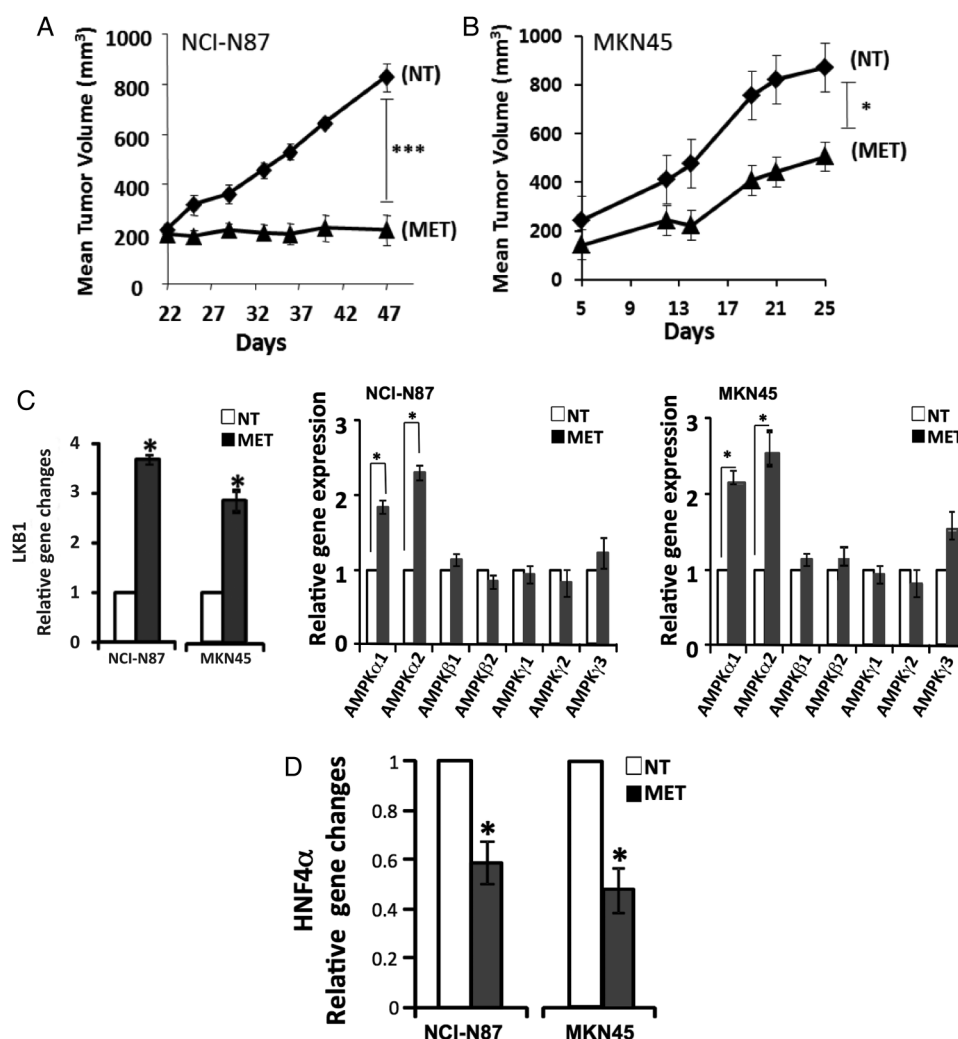


No significant association with WNT5A levels was found with the intestinal GC type in two cohorts (see online supplementary figures S10B and D). These results suggest the potential of WNT5A as a molecular marker to facilitate patient stratification. The higher expression of WNT5A in intestinal type cancer and non-neoplastic glands of intestinal metaplasia may be a phenomenon that accompanies intestinal differentiation. In diffuse type cancers, however, high expression of WNT5A is not a phenomenon accompanied by differentiation and may represent a functional acquisition to more aggressive behaviour.

#### Animal models confirm the AMPK-HNF4 $\alpha$ -WNT5A signalling cascade

From our previous study and the above GC cell line perturbation experiments (metformin treatment and siRNA-mediated

knockdown), we elucidated the context of HNF4 $\alpha$  signalling in GC, with upstream regulators LKB1-AMPK and downstream targets WNT5A-HIF-1 $\alpha$ . To confirm the above finding in a more biologically relevant context, we performed experiments in two xenograft (NCI-N87 and MKN45) mouse models, showing metformin to have strong antitumor activity (figure 7A, B). Importantly, we found the regulatory relationships to be consistent with our observations in the cell line studies. Upon metformin treatment, LKB1 expression increased 3.6-fold in NCI-N87 cells and 2.8-fold in MKN45 cells compared with no treatment; AMPK $\alpha$  expression also significantly increased (figure 7C). Concomitantly, HNF4 $\alpha$  mRNA levels decreased by 44% in NCI-N87 cells and 50% in MKN45 cells compared with no treatment (figure 7D). Immunohistochemistry also revealed HNF4 $\alpha$  protein downregulation in xenograft models (figure 7E),



**Figure 7** Animal models confirm the liver kinase B1/AMP-activated protein kinase/hepatocyte nuclear factor-4 $\alpha$  (LKB1/AMPK/HNF4 $\alpha$ ) signalling cascade in gastric cancer (GC) mouse models. (A, B) Antitumor activity of metformin treatment on NCI-N87 and MKN45 GC mouse xenograft models (*scid* mice, n=8 per cell type). Cells were subcutaneously injected and grown for 22 days for NCI-N87 cells and 5 days for MKN45 cells before treating with metformin. Tumour size growth was measured and compared between mice treated with or without metformin, as depicted by the growth curve (diamond=non-treated (NT); triangle=metformin-treated (MET)) (\* $p<0.05$ , \*\*\* $p<0.001$ ). (C) AMPK subunit expression levels with and without metformin after 25 days (open bars=NT, black bars=MET). The expression levels of AMPK $\alpha$ 1 and AMPK $\alpha$ 2 were significantly higher when treated with metformin, but not those of AMPK $\beta$ 1, AMPK $\beta$ 2, AMPK $\gamma$ 1, AMPK $\gamma$ 2, AMPK $\gamma$ 3 (\* $p<0.05$ ). (D) Expression level of HNF4 $\alpha$  with and without metformin at 25 days (open bars=NT, black bars=MET). HNF4 $\alpha$  expression level decreased upon metformin treatment. \* $p<0.05$ . (E) Immunohistochemistry results showing WNT5A staining of mouse model xenograft tumours. WNT5A levels in tumours strongly decreased when mice were treated with metformin. The stain was scored as 0–3, representing weakly or strongly positively stained cells. (F) Xenograft model protein levels for  $\beta$ -catenin and TCF1, the downstream genes of the HNF4 $\alpha$ , WNT5A and WNT pathway. Mice were untreated or treated with metformin for 25 days. Four graphs represent quantified immunoblots using ImageQuant software normalised to  $\beta$ -actin.

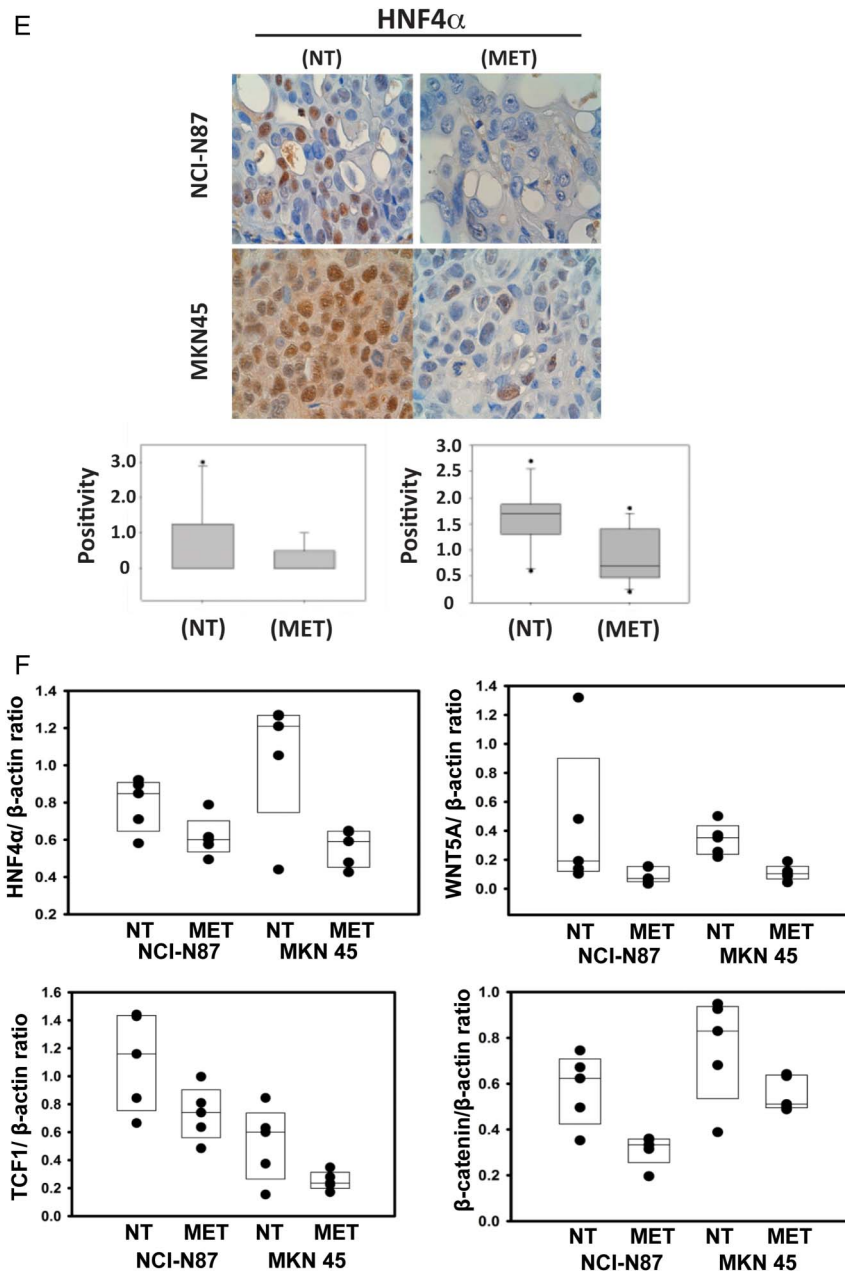


Figure 7 Continued

and WNT5A and its direct downstream target genes,  $\beta$ -catenin and TCF1, were all downregulated by metformin (figure 7F). These *in vivo* results further validate our immunohistochemistry and RNA-seq findings, showing that LKB1–AMPK–HNF4 $\alpha$ –WNT5A–HIF-1 $\alpha$  represents a key signal cascade in GC tumorigenesis. These results further validate our computational approach ('PATHOME'), in which we implicated an HNF4 $\alpha$ –WNT5A signal coupling in GC,<sup>34</sup> an approach we believe improves on the mere examination of gene ontology or gene set enrichment analysis.

## DISCUSSION

In this study we profiled GC transcriptomes from Caucasian as well as Asian-Pacific patients, providing a critical foundation for the molecular basis of this disease across different ethnic groups. Importantly, instead of selecting candidate genes from a single dataset, we undertook a sub-pathway approach,

integrating multiple expression datasets for several different patient populations (Asian-Pacific and Caucasian).<sup>34</sup> Given the high biological heterogeneity of GC, this integrative process allowed us to define a small set of genes with the most robust expression signatures that correlate with GC tumorigenesis.

Those analyses identified HNF4 $\alpha$  as a key GC oncogene. HNF4 $\alpha$  is a nuclear receptor that activates the expression of genes involved in endoderm development and glucose, fatty acid and cholesterol metabolism, and its isoforms have been studied in the liver.<sup>35–36</sup> Previous studies suggested HNF4 $\alpha$  as a potential direct or indirect target for pharmacological drugs that act on the intestinal epithelium (a primary site of metabolic control),<sup>32</sup> and one HNF4 $\alpha$  isoform was shown to correlate with Epstein–Barr viral infection in GC tumours.<sup>37</sup> To assess the function of HNF4 $\alpha$ , we performed GC cell perturbation experiments through shRNA or direct antagonists or via metformin, a widely used antidiabetes drug.<sup>38</sup> In agreement with our



results, metformin was previously found to inhibit MKN-1, -45 and -74 GC cell lines and xenograft growth through its effects on cell cycle regulatory proteins.<sup>39</sup> Here we further show that metformin treatment activated LKB1-AMPK activation while downregulating HNF4 $\alpha$ . Our study demonstrated that indirect (AMPK) or direct HNF4 $\alpha$  inhibition robustly downregulated HIF-1 $\alpha$ , which is consistent with a proposed role for AMPK in suppressing the 'Warburg effect' anaerobic metabolism characteristic of the malignant phenotype.<sup>40</sup>

Importantly, our results show that HNF4 $\alpha$  antagonists have antitumor activity and also that HNF4 $\alpha$  expression can be modulated by metformin through AMPK signalling, providing insight into possible GC drug combinations. Moreover, HNF4 $\alpha$  can regulate WNT signalling through its direct target WNT5A that is a potential prognostic marker, and our finding of WNT5A suppression by AMPK agrees with a previous study showing upregulation of hepatic WNT5A under fasting conditions.<sup>41</sup> Together, our results highlight the potential of the AMPK $\alpha$ -HNF4 $\alpha$ -WNT5A signalling cascade as a promising targetable pathway for future drug development.

In summary, we believe that our approach of identifying subsets of signal pathways that associate with specific hallmarks of cancer represents a significant improvement over previous methods considering only specific gene ontologies or gene set enrichment. That specific algorithm, designated 'PATHOME',<sup>34</sup> previously postulated the existence of an HNF4 $\alpha$ /WNT5A signal coupling, a computational result that we have experimentally validated in the current work. Together, our results highlight the potential of the AMPK $\alpha$ -HNF4 $\alpha$ -WNT5A signalling cascade as a promising targetable pathway for future GC drug development.

#### Author affiliations

<sup>1</sup>New Experimental Therapeutics Branch, National Cancer Center of Korea, Goyang-si, Kyeonggi-do, Republic of Korea

<sup>2</sup>Department of Pathology, National Cancer Center of Korea, Goyang-si, Kyeonggi-do, Republic of Korea

<sup>3</sup>Molecular Epidemiology Branch, National Cancer Center of Korea, Goyang-si, Kyeonggi-do, Republic of Korea

<sup>4</sup>Department of Experimental Therapeutics, The University of Texas MD Anderson Cancer Center, Houston, Texas, USA

<sup>5</sup>Department of Bioinformatics and Computational Biology, The University of Texas MD Anderson Cancer Center, Houston, Texas, USA

<sup>6</sup>Cancer Center, Sanford-Burnham Medical Research Institute, La Jolla, California, USA

<sup>7</sup>Animal Sciences Branch, National Cancer Center of Korea, Goyang-si, Kyeonggi-do, Republic of Korea

<sup>8</sup>Cancer Genomics Branch, National Cancer Center of Korea, Goyang-si, Kyeonggi-do, Republic of Korea

<sup>9</sup>Department of Statistics, Seoul National University, Seoul, Republic of Korea

<sup>10</sup>Gastric Cancer Branch, National Cancer Center of Korea, Goyang-si, Kyeonggi-do, Republic of Korea

<sup>11</sup>Department of Pathology, The University of Texas MD Anderson Cancer Center, Houston, Texas, USA

**Acknowledgements** We thank LeeAnn Chastain for editorial assistance.

**Contributors** TP, HL and YHK conceived and designed the experiments. DH, SN, IH, HL and YHK analysed the data. HRC, K-TK, M-CK, HRJ, HSP, YG, GP and YHK performed the experiments. HL, TP and YHK wrote the paper. All authors have read and approved the manuscript for publication.

**Funding** This study was supported by grants from the National Cancer Center of the Republic of Korea, NCC-1210350-2 (to YHK), NCC-1210460 (to SN); the National Research Foundation of Korea (NRF) grant funded by the Republic of Korea (MSIP) 2012R1A3A2026438, 2008-0062618, 2013M3A9C4078158 (to TP); grants from the U.S. National Institutes of Health, CA95060, CA129616, CA17094 and CA98920 (to GP), CA143883 and CA016672 (to HL); UTMDACC-G.S. Hogan Gastrointestinal Research Fund and the Lorraine Dell Program in Bioinformatics for Personalization of Cancer Medicine (to HL).

**Competing interests** None.

**Provenance and peer review** Not commissioned; externally peer reviewed.

**Data sharing statement** The gene expression data in this study can be found online at the Gene Expression Omnibus (GSE63288).

**Open Access** This is an Open Access article distributed in accordance with the Creative Commons Attribution Non Commercial (CC BY-NC 4.0) license, which permits others to distribute, remix, adapt, build upon this work non-commercially, and license their derivative works on different terms, provided the original work is properly cited and the use is non-commercial. See: <http://creativecommons.org/licenses/by-nc/4.0/>

#### REFERENCES

- Jemal A, Bray F, Center MM, *et al.* Global cancer statistics. *CA Cancer J Clin* 2011;61:69–90.
- Parkin DM, Bray F, Ferlay J, *et al.* Global cancer statistics, 2002. *CA Cancer J Clin* 2005;55:74–108.
- McDonald M, Hertz RP, Pitman Lowenthal SW. *Pfizer facts, the burden of cancer in Asia*. USA: Pfizer, 2008.
- Ferlay JEA. GLOBOCAN 2008, cancer incidence and mortality worldwide. *CancerBase* 2010;2010.
- Fuccio L, Eusebi LH, Bazzoli F. Gastric cancer, *Helicobacter pylori* infection and other risk factors. *World J Gastrointest Oncol* 2010;2:342–7.
- Suerbaum S, Michetti P. *Helicobacter pylori* infection. *N Engl J Med* 2002;347:1175–86.
- Iizasa H, Nanbo A, Nishikawa J, *et al.* Epstein-Barr virus (EBV)-associated gastric carcinoma. *Viruses* 2012;4:3420–39.
- Kim J, Hoffman JP, Alpaugh RK, *et al.* An iPSC line from human pancreatic ductal adenocarcinoma undergoes early to invasive stages of pancreatic cancer progression. *Cell Reports* 2013;3:2088–99.
- Dankel SN, Hoang T, Flageng MH, *et al.* cAMP-mediated regulation of HNF-4alpha depends on the level of coactivator PGC-1alpha. *Biochim Biophys Acta* 2010;1803:1013–9.
- Yamashita K, Sakuramoto S, Nemoto M, *et al.* Trend in gastric cancer: 35 years of surgical experience in Japan. *World J Gastroenterol* 2011;17:3390–7.
- Jung KW, Won YJ, Kong HJ, *et al.* Cancer statistics in Korea: incidence, mortality, survival and prevalence in 2010. *Cancer Res Treat* 2013;45:1–14.
- Tamura W, Fukami N. Early gastric cancer and dysplasia. *Gastrointest Endosc Clin North Am* 2013;23:77–94.
- Bang YJ, Van Cutsem E, Feyereislova A, *et al.* Trastuzumab in combination with chemotherapy versus chemotherapy alone for treatment of HER2-positive advanced gastric or gastro-oesophageal junction cancer (ToGA): a phase 3, open-label, randomised controlled trial. *Lancet* 2010;376:687–97.
- Okines AFC, Cunningham D. Trastuzumab in gastric cancer. *Eur J Cancer* 2010;46:1949–59.
- Arkenau HT. Gastric cancer in the era of molecularly targeted agents: current drug development strategies. *J Cancer Res Clin Oncol* 2009;135:855–66.
- Ku GY, Ilson DH. Esophagogastric cancer: targeted agents. *Cancer Treat Rev* 2010;36:235–48.
- Wainberg ZA, Anghel A, Desai AJ, *et al.* Lapatinib, a dual EGFR and HER2 kinase inhibitor, selectively inhibits HER2-amplified human gastric cancer cells and is synergistic with trastuzumab in vitro and in vivo. *Clin Cancer Res* 2010;16:1509–19.
- Cui J, Chen Y, Chou WC, *et al.* An integrated transcriptomic and computational analysis for biomarker identification in gastric cancer. *Nucleic Acids Res* 2011;39:1197–207.
- Liang H, Kim YH. Identifying molecular drivers of gastric cancer through next-generation sequencing. *Cancer Lett* 2013;340:241–6.
- Kim YH, Liang H, Liu X, *et al.* AMPKalpha modulation in cancer progression: multilayer integrative analysis of the whole transcriptome in Asian gastric cancer. *Cancer Res* 2012;72:2512–21.
- Cho JY, Lim JY, Cheong JH, *et al.* Gene expression signature-based prognostic risk score in gastric cancer. *Clin Cancer Res* 2011;17:1850–7.
- The Cancer Genome Atlas. <http://cancergenome.nih.gov/> (assessed 9 Nov 2014).
- Kim YH, Coon A, Baker AF, *et al.* Antitumor agent PX-12 inhibits HIF-1alpha protein levels through an Nrf2/PMF-1-mediated increase in spermidine/spermine acetyl transferase. *Cancer Chemother Pharmacol* 2011;68:405–13.
- Schmittgen TD, Livak KJ. Analyzing real-time PCR data by the comparative C(T) method. *Nat Protoc* 2008;3:1101–8.
- Chellappa K, Robertson GR, Sladek FM. HNF4alpha: a new biomarker in colon cancer? *Biomark Med* 2012;6:297–300.
- Hwang-Versluis WW, Sladek FM. HNF4alpha—role in drug metabolism and potential drug target? *Curr Opin Pharmacol* 2010;10:698–705.
- Tanaka T, Jiang S, Hotta H, *et al.* Dysregulated expression of P1 and P2 promoter-driven hepatocyte nuclear factor-4alpha in the pathogenesis of human cancer. *J Pathol* 2006;208:662–72.
- Semenza GL. Targeting HIF-1 for cancer therapy. *Nat Rev Cancer* 2003;3:721–32.

- 29 Hallstrom TC, Mori S, Nevins JR. An E2F1-dependent gene expression program that determines the balance between proliferation and cell death. *Cancer Cell* 2008;13:11–22.
- 30 Cattin AL, Le Beyec J, Barreau F, *et al.* Hepatocyte nuclear factor 4alpha, a key factor for homeostasis, cell architecture, and barrier function of the adult intestinal epithelium. *Mol Cell Biol* 2009;29:6294–308.
- 31 Hong YH, Varanasi US, Yang W, *et al.* AMP-activated protein kinase regulates HNF4alpha transcriptional activity by inhibiting dimer formation and decreasing protein stability. *J Biol Chem* 2003;278:27495–501.
- 32 Ribeiro A, Archer A, Le Beyec J, *et al.* Hepatic nuclear factor-4, a key transcription factor at the crossroads between architecture and function of epithelia. *Recent Pat Endocr Metab Immune Drug Disc* 2007;1:166–75.
- 33 Woods A, Johnstone SR, Dickerson K, *et al.* LKB1 is the upstream kinase in the AMP-activated protein kinase cascade. *Curr Biol* 2003;13:2004–8.
- 34 Nam S, Chang HR, Kim KT, *et al.* PATHOME: an algorithm for accurately detecting differentially expressed subpathways. *Oncogene* 2014;33:4941–51.
- 35 Torres-Padilla ME, Fougere-Deschatrette C, Weiss MC. Expression of HNF4alpha isoforms in mouse liver development is regulated by sequential promoter usage and constitutive 3' end splicing. *Mech Dev* 2001;109:183–93.
- 36 Watt AJ, Garrison WD, Duncan SA. HNF4: a central regulator of hepatocyte differentiation and function. *Hepatology* 2003;37:1249–53.
- 37 Uozaki H, Barua RR, Minhua S, *et al.* Transcriptional factor typing with SOX2, HNF4aP1, and CDX2 closely relates to tumor invasion and Epstein-Barr virus status in gastric cancer. *Int J Clin Exp Pathol* 2011;4:230–40.
- 38 Gallagher EJ, LeRoith D. Diabetes, cancer, and metformin: connections of metabolism and cell proliferation. *Ann N Y Acad Sci* 2011;1243:54–68.
- 39 Kato K, Gong J, Iwama H, *et al.* The antidiabetic drug metformin inhibits gastric cancer cell proliferation in vitro and in vivo. *Mol Cancer Ther* 2012;11:549–60.
- 40 Shackelford DB, Shaw RJ. The LKB1-AMPK pathway: metabolism and growth control in tumour suppression. *Nat Rev Cancer* 2009;9:563–75.
- 41 Liu H, Fergusson MM, Wu JJ, *et al.* Wnt signaling regulates hepatic metabolism. *Sci Signal* 2011;4:ra6.