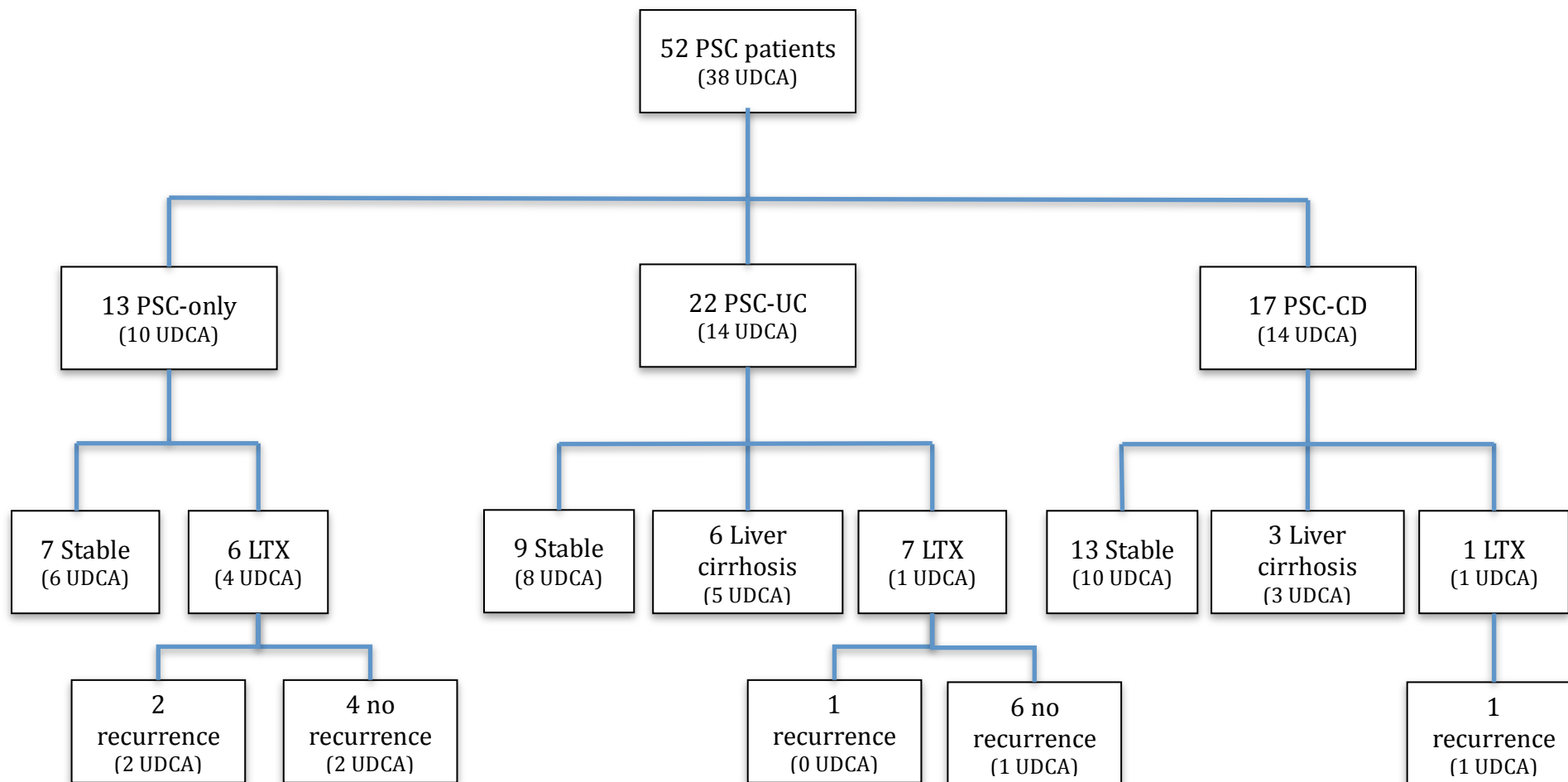
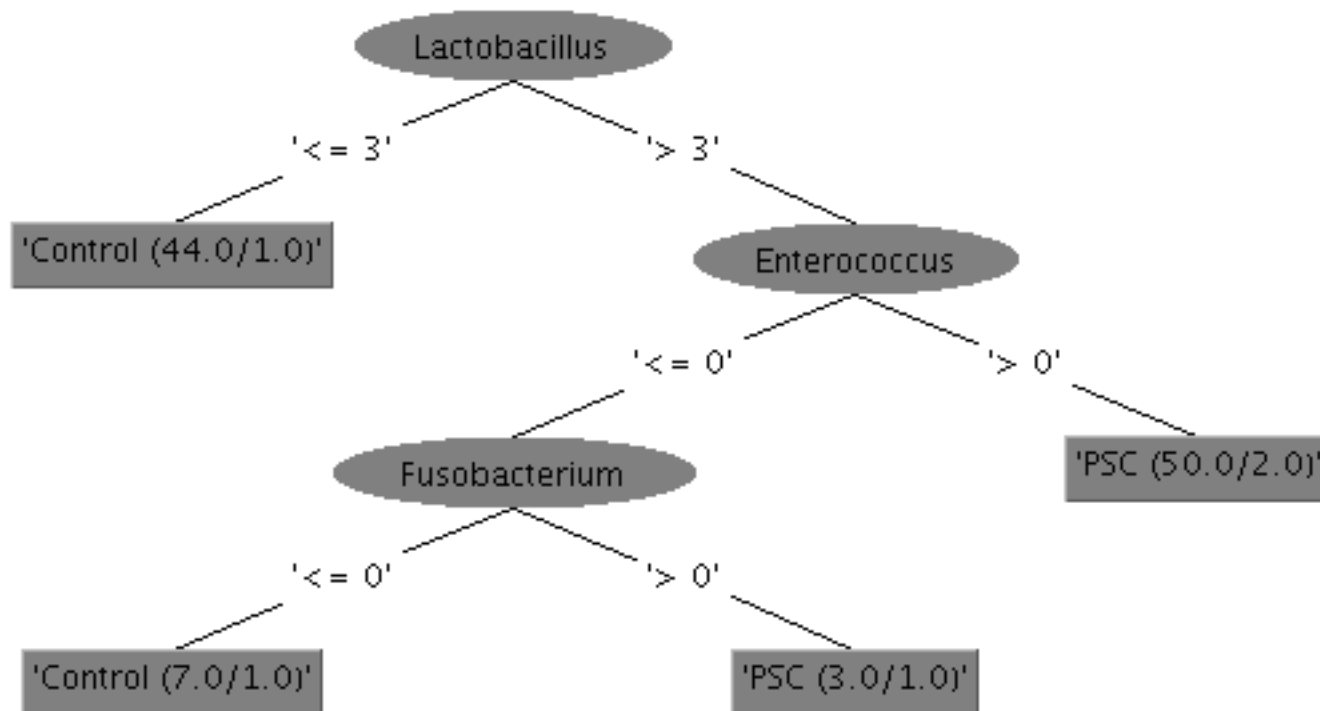


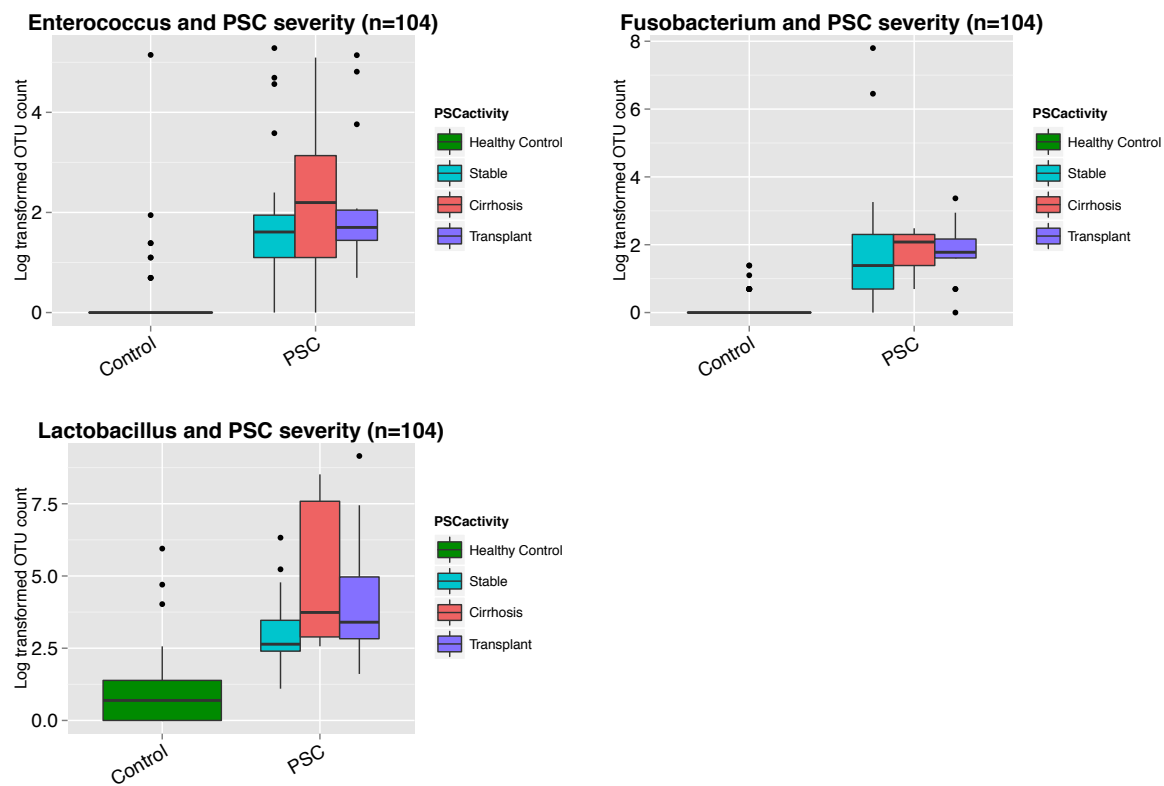
**Figure S1:** Number of PSC patients from the first cohort according to disease severity and comorbidity with IBD. LTX, liver transplantation; PSC, primary sclerosing cholangitis; PSC-CD, patients with primary sclerosing cholangitis and Crohn’s disease; PSC-UC, patients with primary sclerosing cholangitis and ulcerative colitis; UDCA, ursodeoxycholic acid. Recurrence and no recurrence reports recurrence of PSC after liver transplantation.



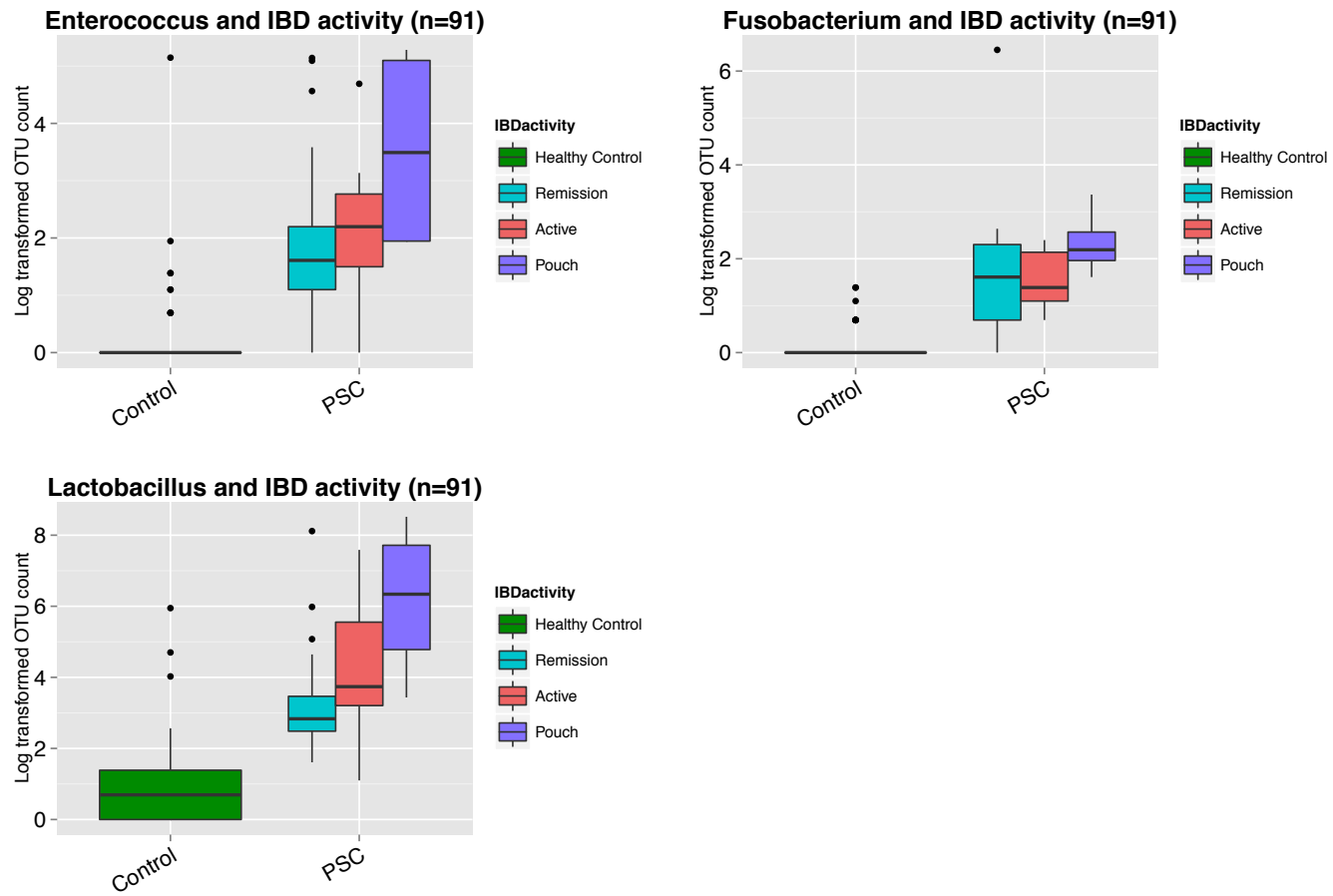
**Figure S2:** J48 decision tree for PSC diagnosis based on the Enterococcus, Fusobacterium and Lactobacillus abundances in PSC patients and healthy controls, trained on the first cohort (n=104, Weka 3-6-12). The numbers in the decision tree indicate the number of OTUs needed to make the decision.



**Figure S3a:** Genus abundances (log-transformed) according to PSC severity, for the genera significantly associated to PSC.



**Figure S3b:** Genus abundance (log-transformed) according to IBD activity, for the genera significantly associated to PSC.



**Figure S4:** Oligotypes from genus *Enterococcus*

|||||

**OLIG1** 1,267 TG *b* TACGTAGGTGGCAAGCGTTGTCCGGATTTATTGGGCGTAAAGCGAGCGCAGGCGGTTTCTTAAGTCTGATGTGAAAGCCCCGGCTCAACCGGGGAGGGTCATTGGAACTGGGA**G**ACTTGAGTGCAGAAGAG

**OLIG2** 109 TA *b* TACGTAGGTGGCAAGCGTTGTCCGGATTTATTGGGCGTAAAGCGAGCGCAGGCGGTTTCTTAAGTCTGATGTGAAAGCCCCGGCTCAACCGGGGAGGGTCATTGGAACTGGGA**A**ACTTGAGTGCAGAAGAG