

Supplementary tables:

Supplementary table 1: criteria for study entry

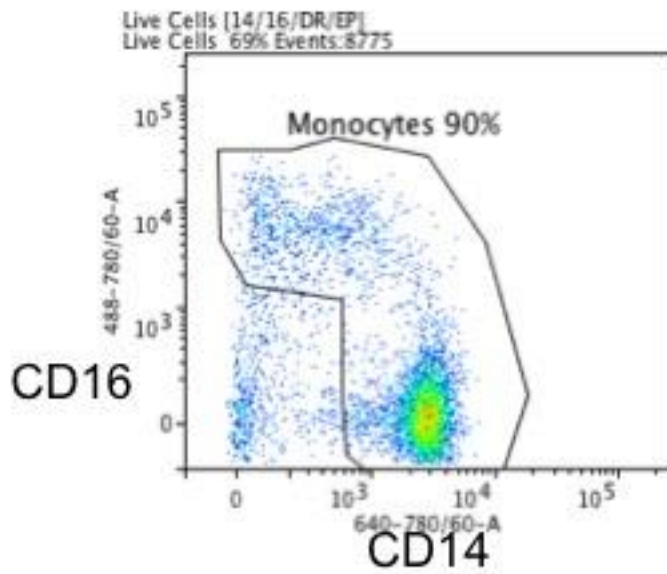
<b>Inclusion Criteria</b>	<ul style="list-style-type: none"><li>• &gt;18 years old</li><li>• Serum bilirubin 80mmol/L</li><li>• Alcohol consumption &gt;80g/day (men) &gt;60g/day (women)</li><li>• &lt;4 weeks since admission to hospital</li><li>• Maddrey's discriminant function <math>\geq 32</math></li></ul>
<b>Exclusion criteria</b>	<ul style="list-style-type: none"><li>• &gt; 2 months abstinence</li><li>• &gt; 3 months prior jaundice</li><li>• No evidence Hepatitis B nor C infection, hepatocellular carcinoma, nor biliary obstruction</li><li>• Pregnant or lactating women</li><li>• Serum creatinine &gt;500mmol/L</li><li>• Current malignancy</li><li>• AST &gt; 500 or ALT &gt;300</li><li>• Untreated sepsis</li></ul>

Supplementary table 2: infections acquired within two weeks of sampling

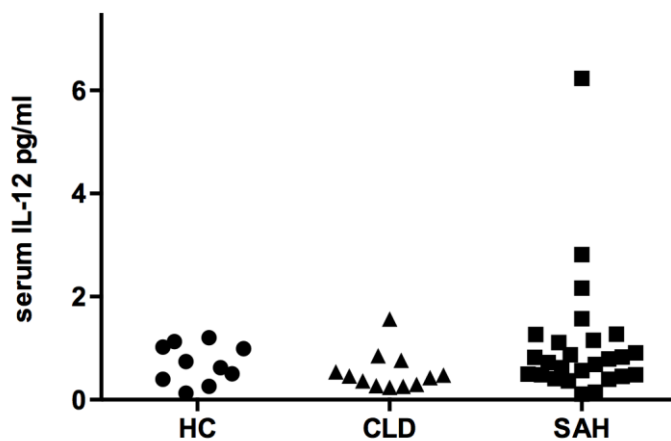
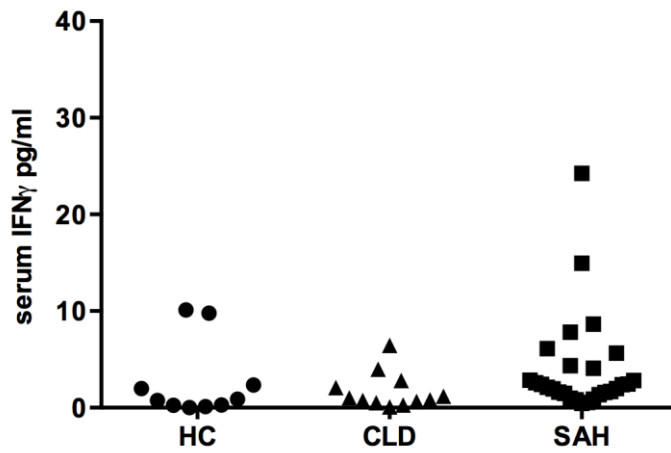
<b>Infection</b>	<b>Number of cases</b>
Pneumonia	10
Urinary tract infection	3
Cellulitis	1
Tuberculosis	1
Clostridium difficile	1
Necrotising Fasciitis	1

Supplementary figures:

Supplementary figure 1: A. staining with live/dead marker 7-AAD shows few dead cells; B. FACS dot plot demonstrating monocyte purity after monocyte isolation by negative selection



Supplementary figure 2: A. serum IFN- $\gamma$ ; B. serum IL-12 in SAH vs HC and CLD.1



Supplementary figure 3: expression of p47<sup>phox</sup> protein in SAH monocytes with an without MOB defect by Western blotting

