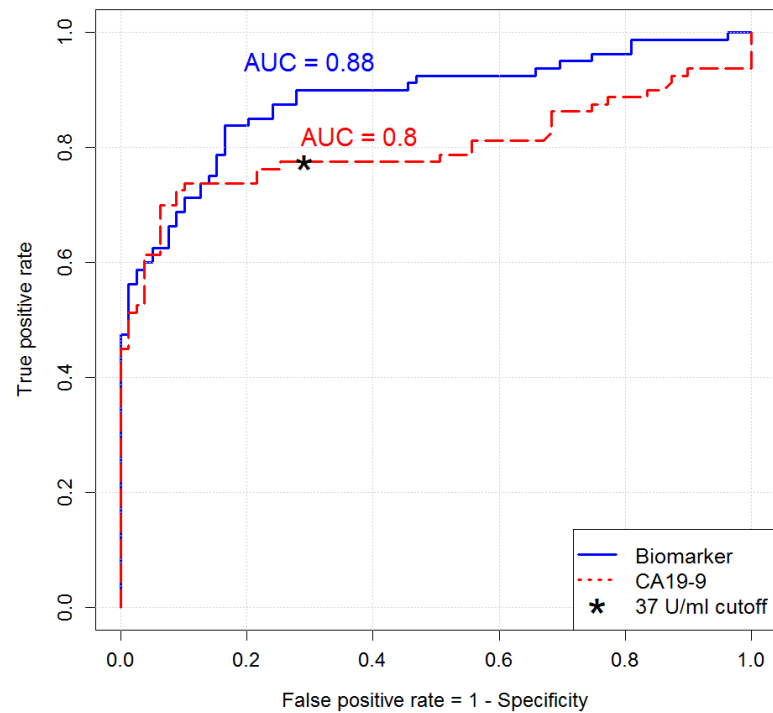
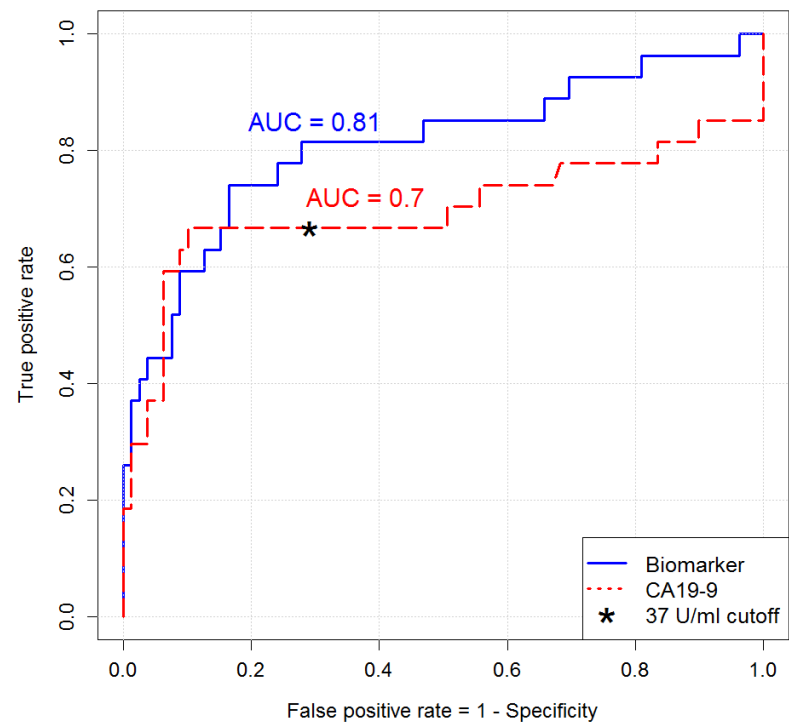


Supplement Figure 1A: ROC curves of the biomarker (biomarker signature) results on serum samples from all pancreatic cancer patients versus chronic pancreatitis patients as well as from resectable pancreatic cancer patients versus control from training set. EN included a 10-fold cross validation and was applied on log10 transformed data. AUC = Area under the Curve.

Training set, all PDAC patients

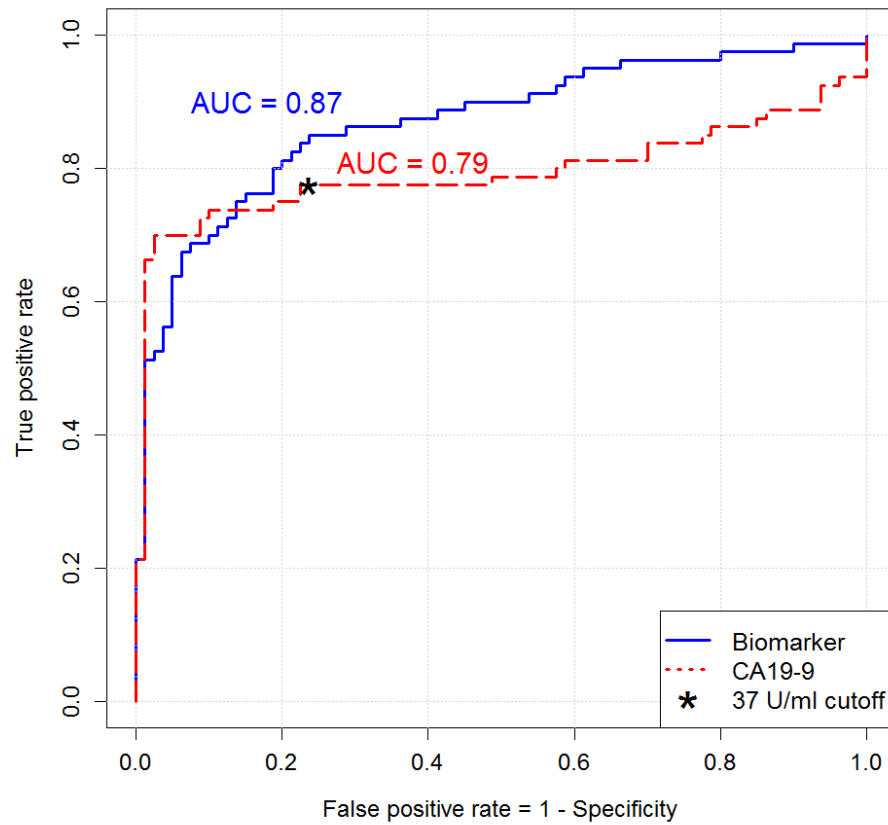


Training set, resectable PDAC

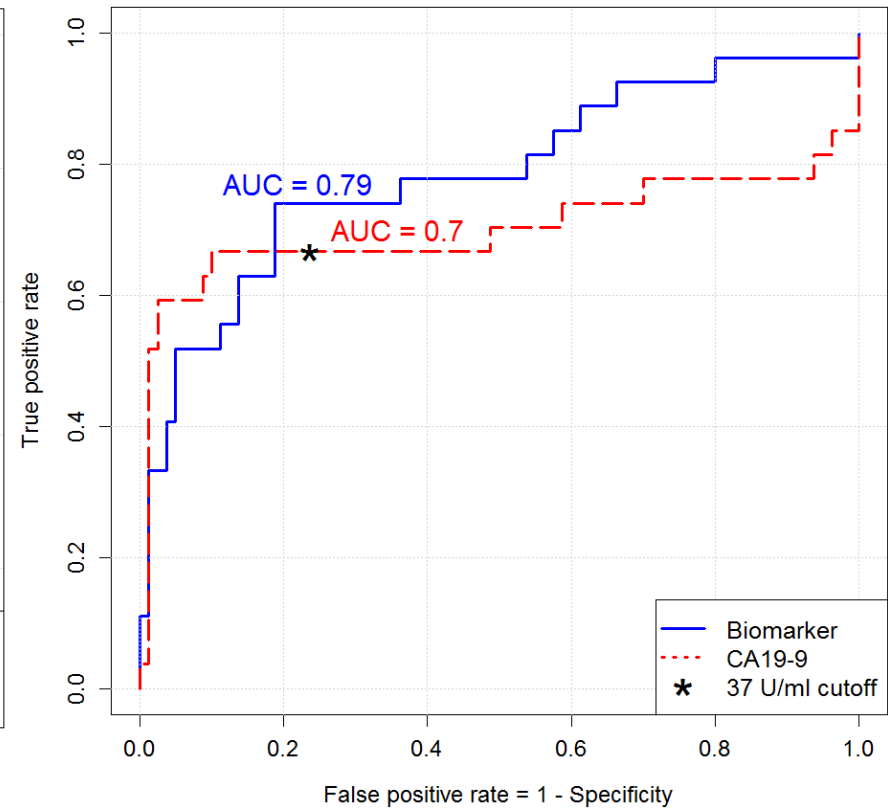


Supplement Figure 1B ROC curves of the biomarker (biomarker signature) results on serum samples from all pancreatic cancer patients versus liver cirrhosis patients as well as for resectable PDAC versus liver cirrhosis from training set. EN included a 10-fold cross validation and was applied on log10 transformed data. AUC = Area under the Curve.

Training set, all PDAC patients

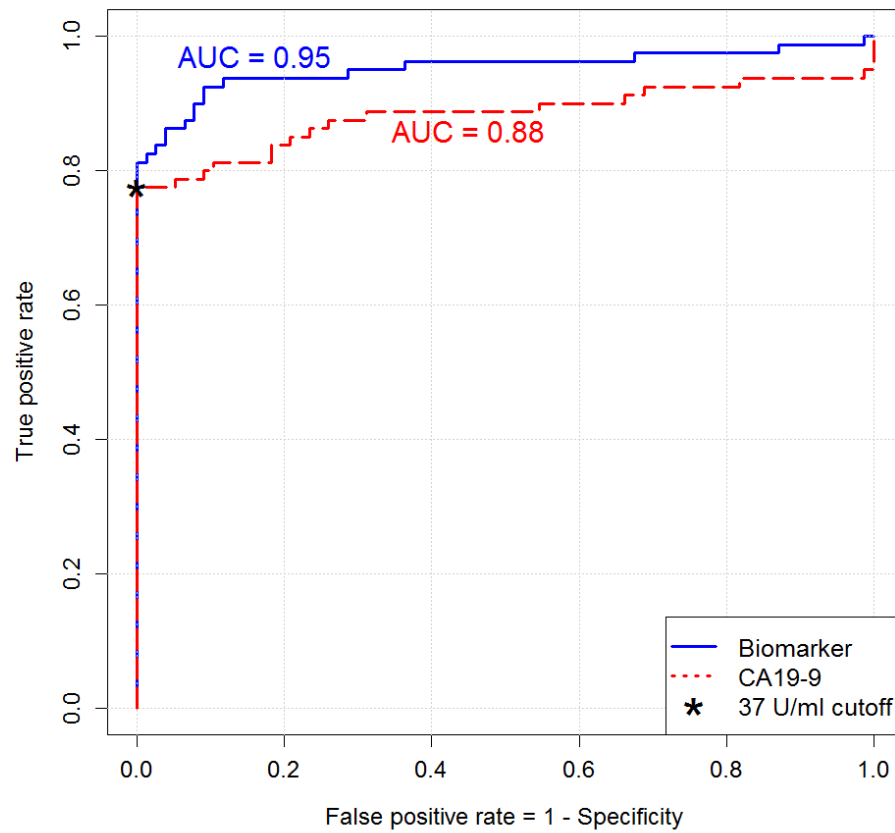


Training set, resectable PDAC

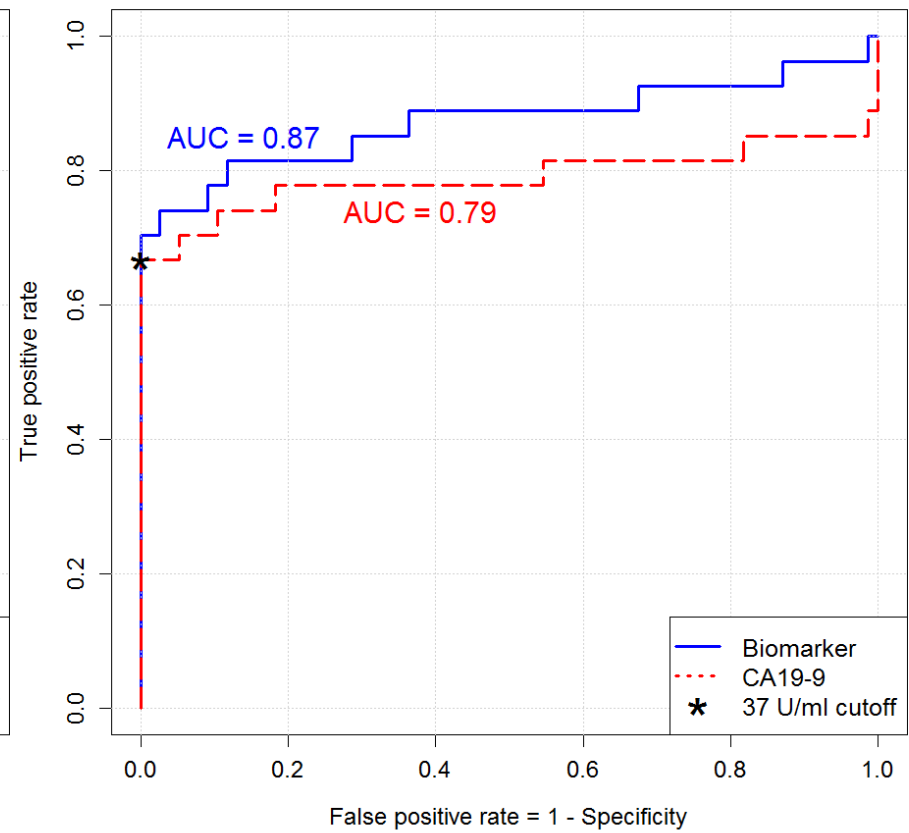


Supplement Figure 1C: ROC curves of the biomarker (biomarker signature) results on serum samples from training set of all pancreatic cancer patients versus healthy controls as well as only from resectable PDAC patients from training set in comparison to healthy controls. EN included a 10-fold cross validation and was applied on log10 transformed data. AUC = Area under the Curve.

Training set, all PDAC patients

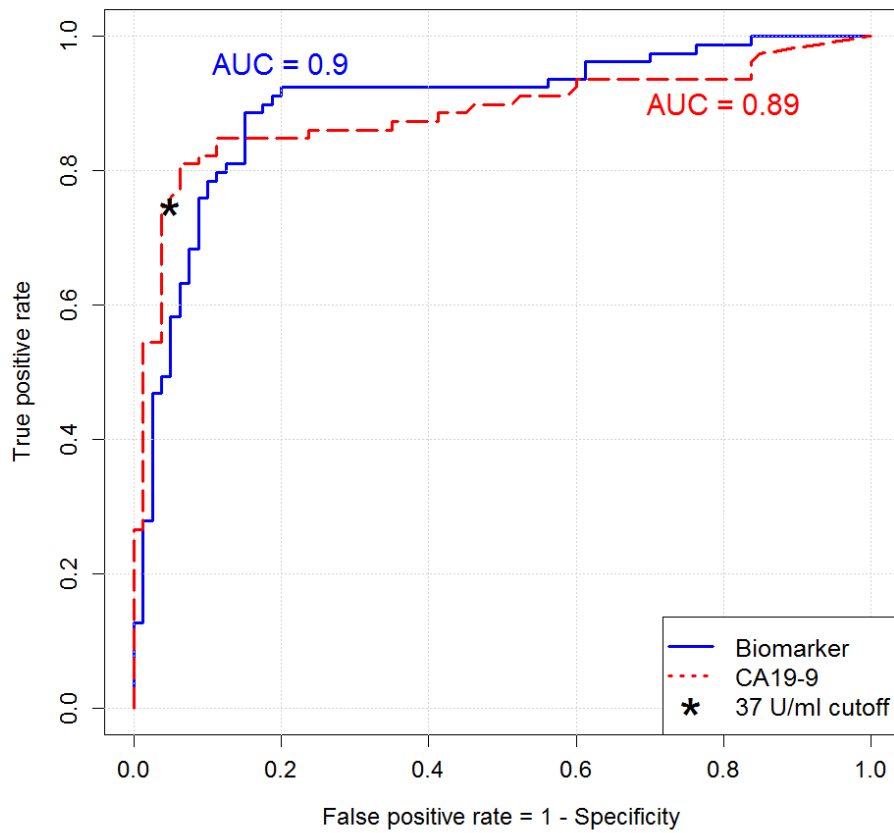


Training set, resectable PDAC

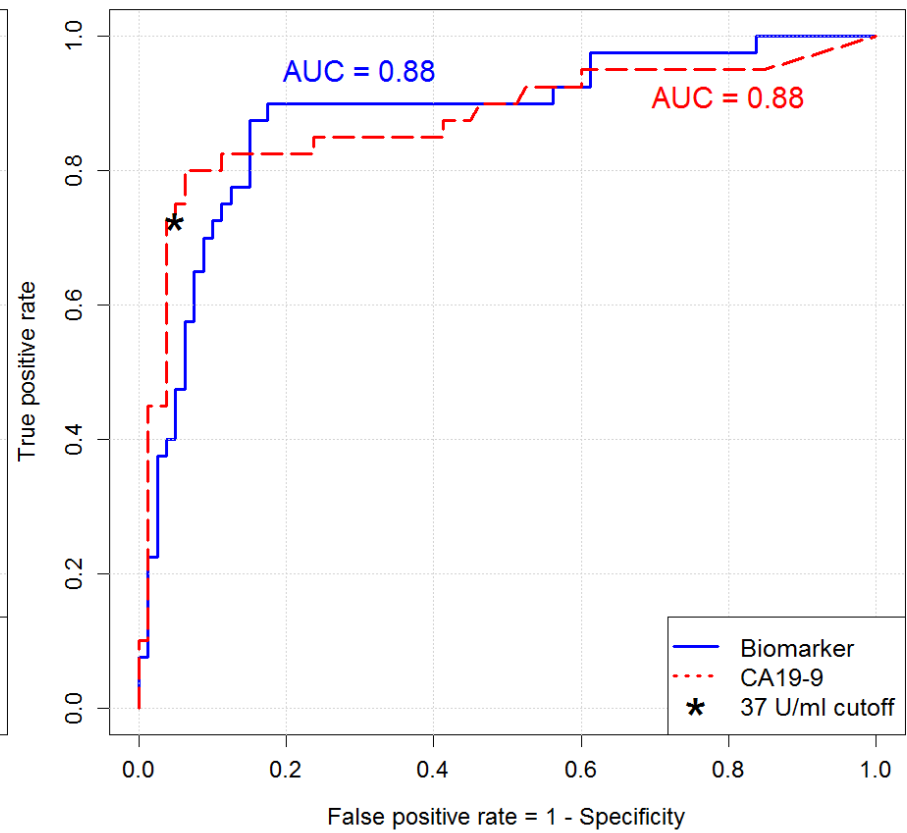


Supplement Figure 1D: ROC curves of the biomarker (biomarker signature) results on EDTA plasma from test set of all pancreatic cancer patients versus non-pancreatic controls as well as only from resectable PDAC patients from test set in comparison to non-pancreatic controls. EN included a 10-fold cross validation and was applied on log10 transformed data. AUC = Area under the Curve.

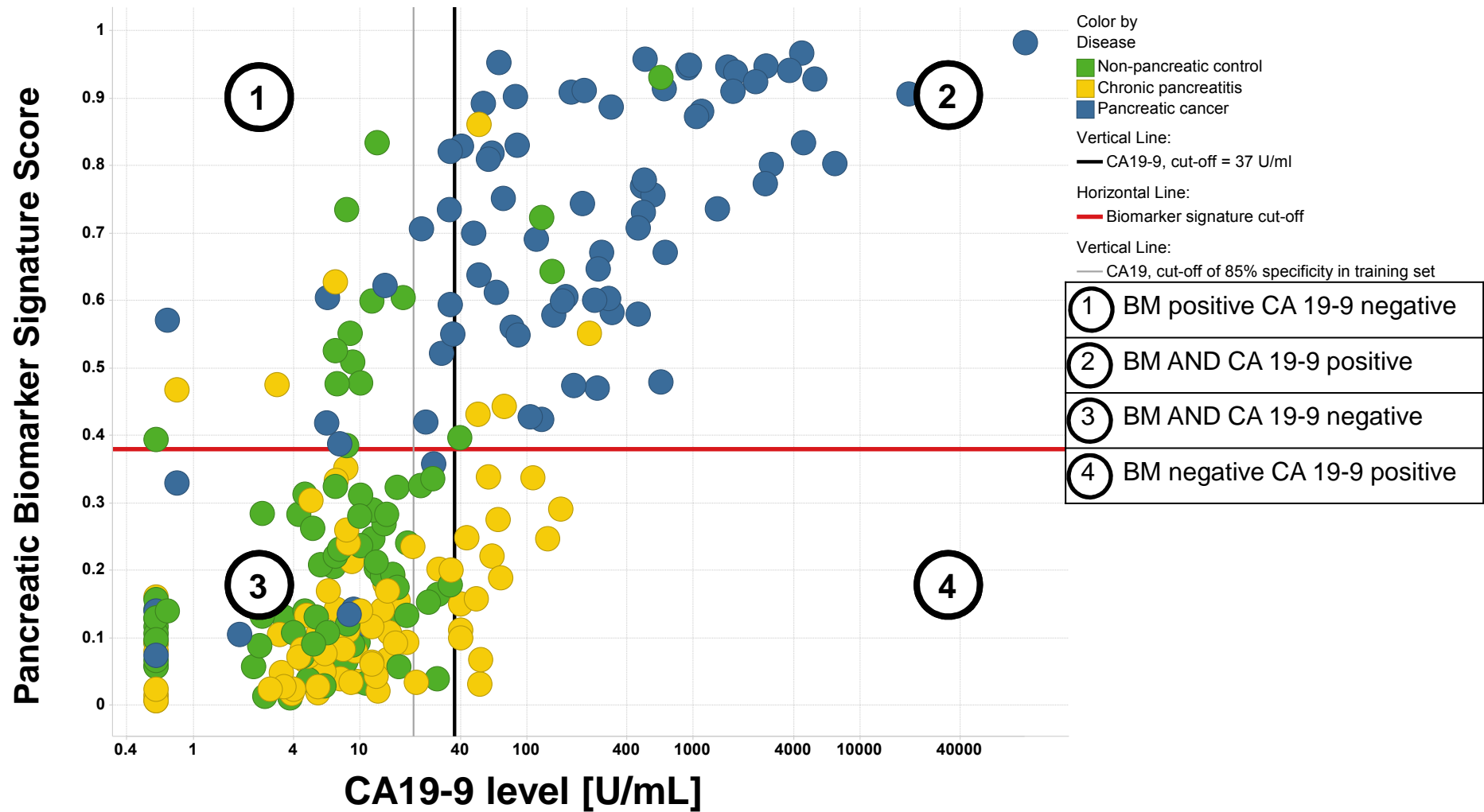
Test set, all PDAC patients



Test set, resectable PDAC



Supplemental Figure 2 – CA19-9 cut-off based on 85% spec in trainings set, plus control



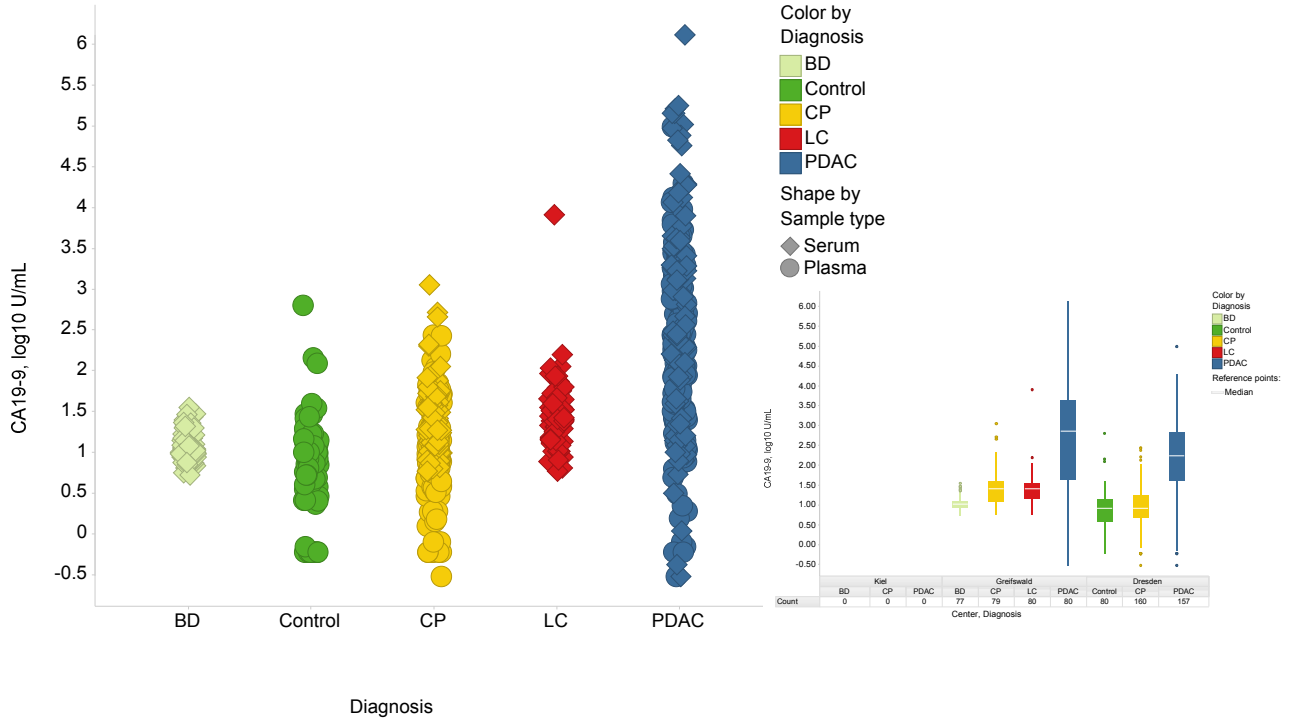
Scatter plot for graphical representation of the biomarker signature score. Classifiers are the biomarker signature generated in the training set and presented here for the test set. Y-axis score of biomarker signature with the cut-off of ≥ 0.384 and CA19-9 on the X-axis with the cut-off ≥ 37 U/ml and 20.9 U/ml as light grey line. Chronic pancreatitis in yellow circles (n=80) and pancreatic cancer in blue circles (n=79). Green circles are non-pancreatic controls.

Supplemental figure 3A-J: Scatter plots of normalized metabolite values for the 10 analytes as well box-plots over all three centers.

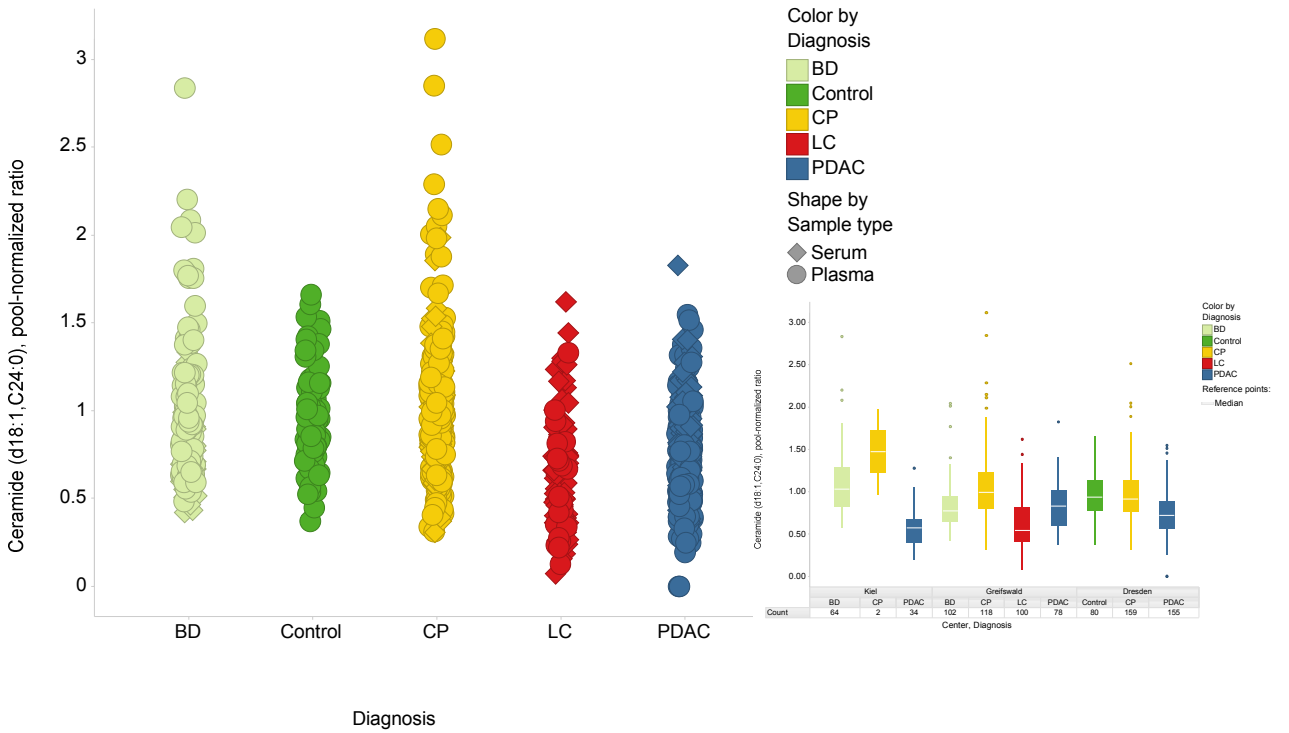
Figure legend: Scatter plot for graphical representation of the single analytes used for the biomarker signature. On Y-axis is the abundance given as ratio and on the X-axis we have plotted the different disease entities. For the insert we provide box-plots for each disease entity and center. Patients numbers recruited for each disease entity and each center are given below the box-plot. Chronic pancreatitis is depicted in yellow, pancreatic cancer in blue, controls in green, liver cirrhosis in red and blood donors in light green.

Supplemental figure 3A-J: Scatter plots of normalized metabolite values for the 10 analytes as well box-plots over all three centers

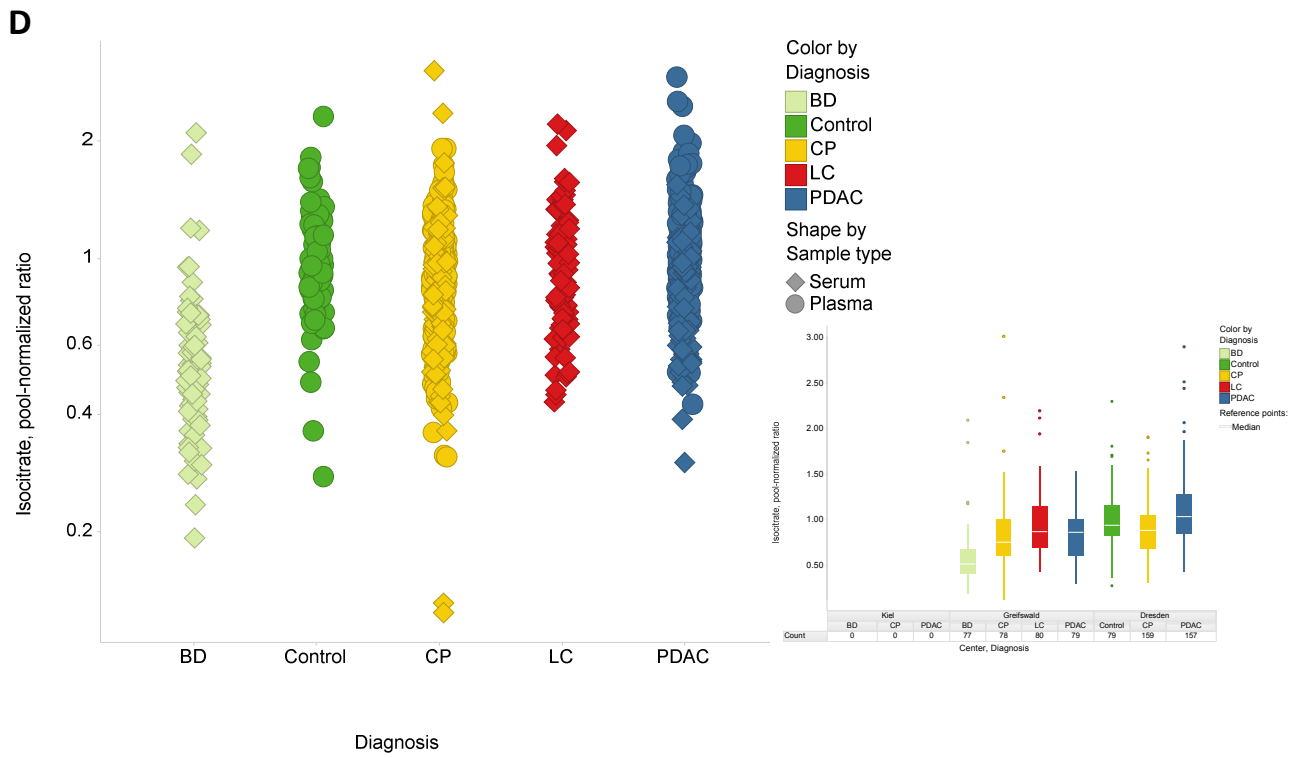
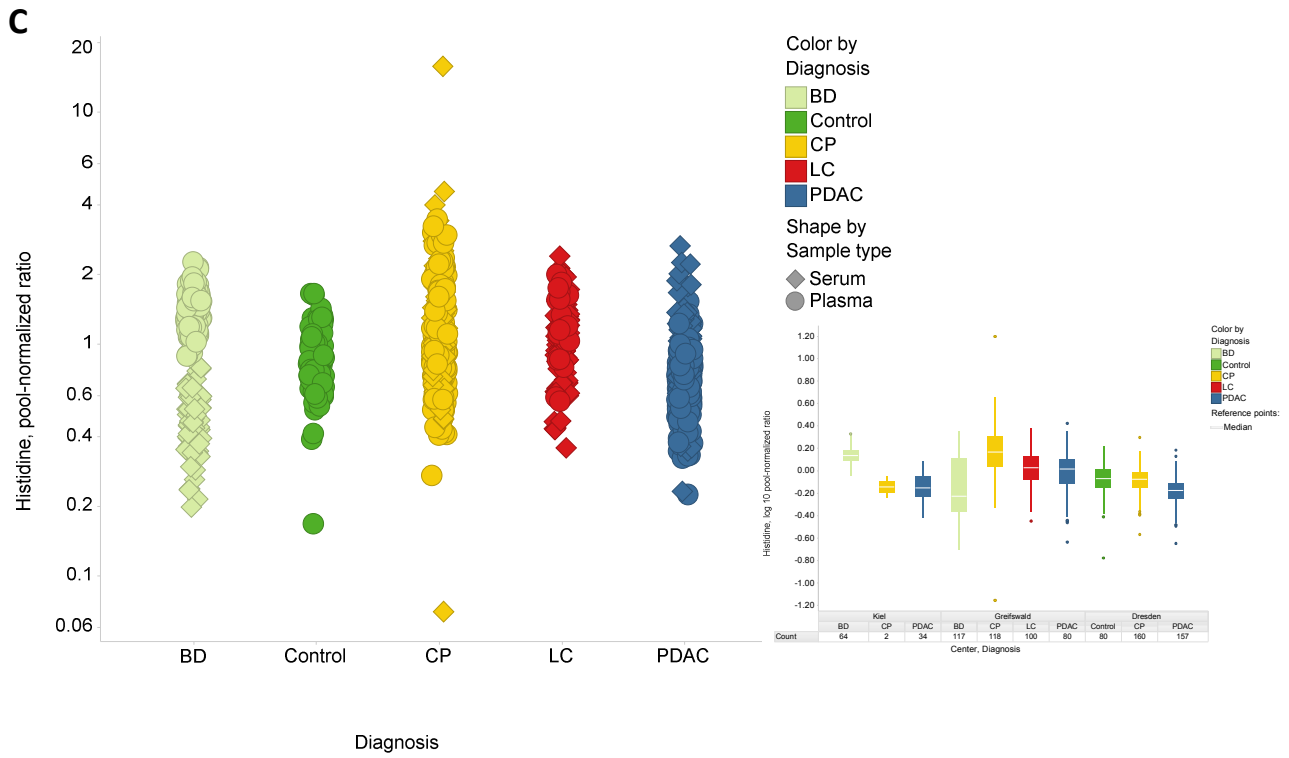
A



B

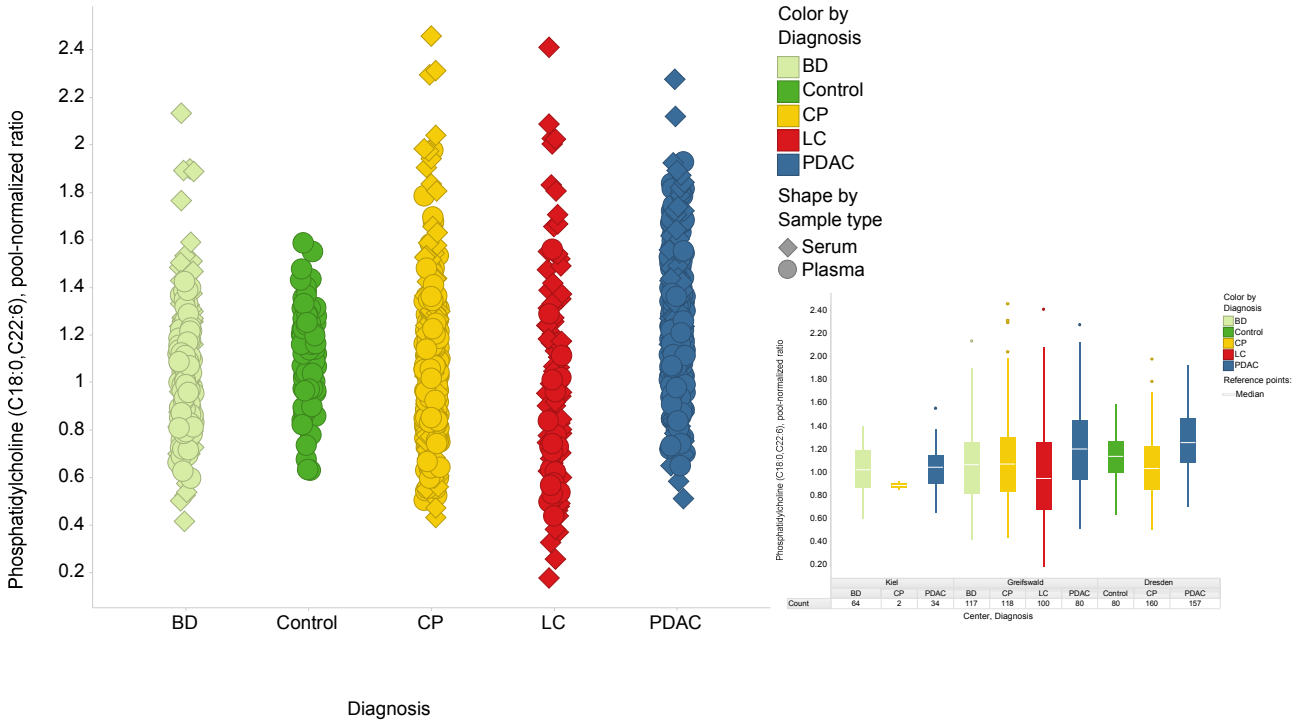


Supplemental figure 3A-J: Scatter plots of normalized metabolite values for the 10 analytes as well box-plots over all three centers

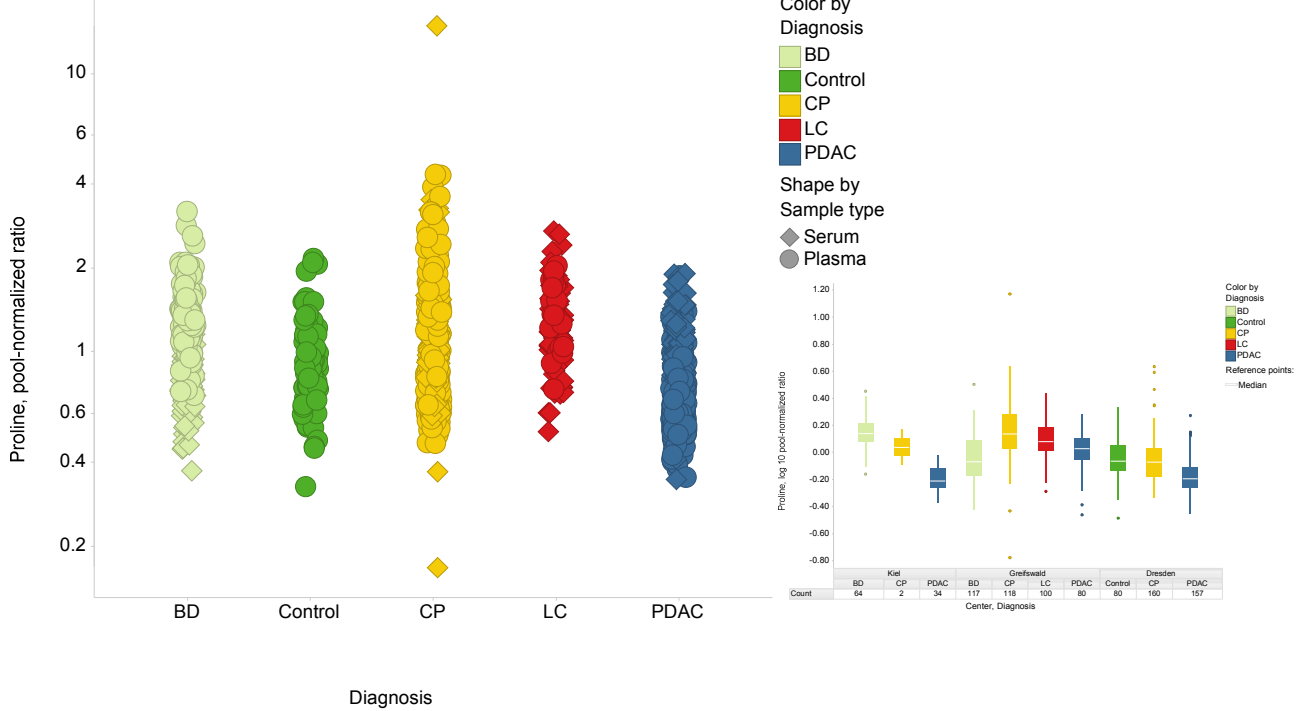


Supplemental figure 3A-J: Scatter plots of normalized metabolite values for the 10 analytes as well box-plots over all three centers

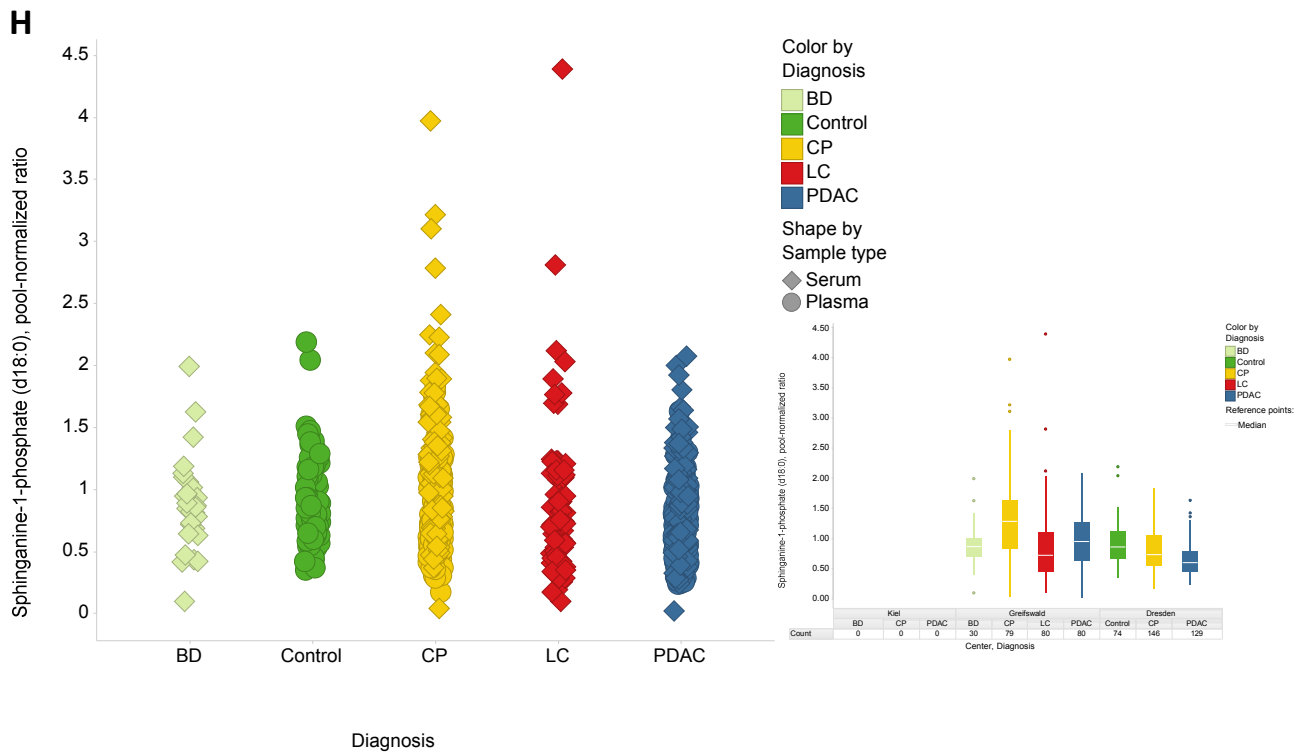
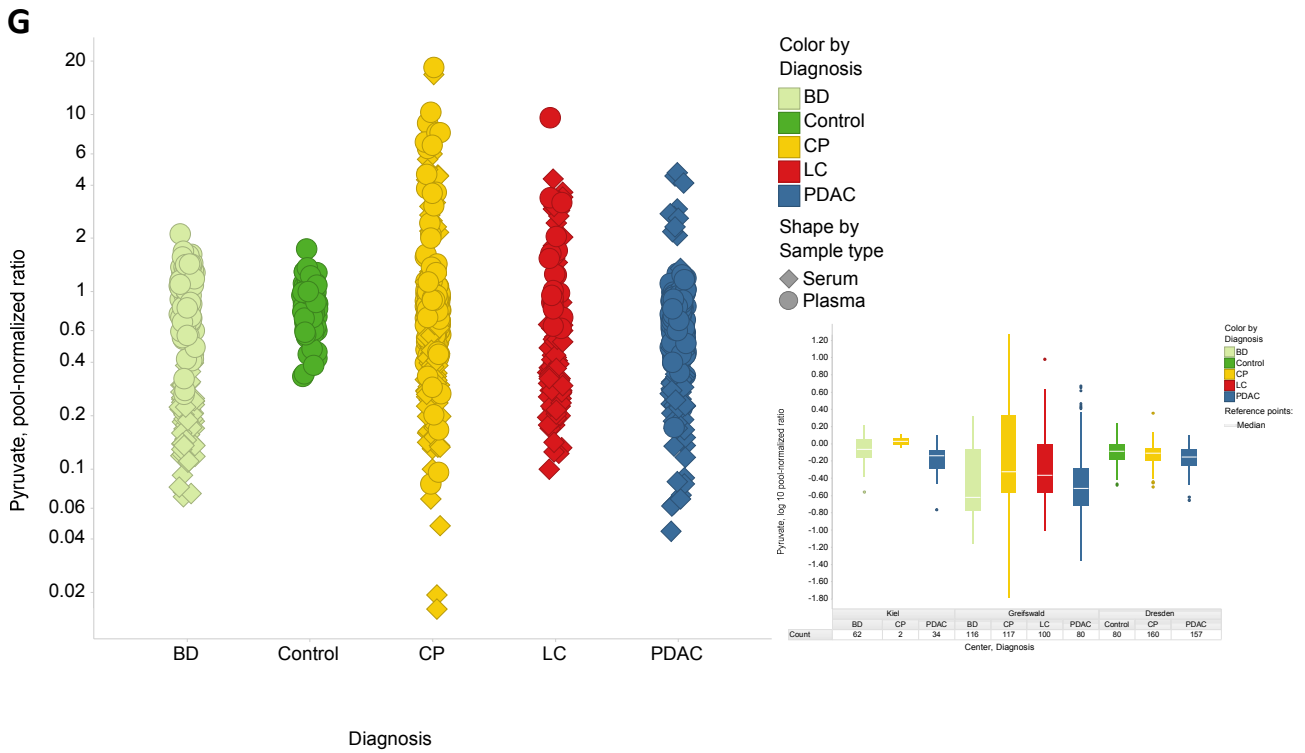
E



F



Supplemental figure 3A-J: Scatter plots of normalized metabolite values for the 10 analytes as well box-plots over all three centers



Supplemental figure 3A-J: Scatter plots of normalized metabolite values for the 10 analytes as well box-plots over all three centers

