

roundtable meeting article proposed that hepatocellular carcinoma (HCC) staging linked to first-line treatment indication can help clinicians guide patients through treatment decision-making process, patients and researchers need reliable ways to stage disease and predict prognosis. Controversies always exist during multidisciplinary team (MDT) decision-making for HCC patients within the Milan criteria (MC) due to the lack of evidence-based studies of composite multiparametric evaluations among the three potential curative therapies: liver transplantation (LT), liver resection (LR) and local ablation (LA).<sup>2-4</sup> Herein, we retrospectively evaluated the efficacy of LT, LR and LA for HCC patients within the MC and explored an individualised assessment prediction model to assist with MDT decision-making.

Institutional ethics committees approved the retrospective analyses of consecutive HCC patients admitted to two medical centres of Nankai University (Tianjin, China) between November 2011 and March 2016. A total of 283 HCC patients within the MC were finally enrolled and classified into LT (n=100), LR (n=89) and LA (n=94) groups based on the first-line treatments. Under the three treatment groups, subgroups were divided according to solitary tumor  $\leq 3$  cm, 2-3 tumours and each  $\leq 3$  cm (multiple tumours  $\leq 3$  cm), and solitary tumour 3-5 cm. Inverse probability of treatment weighting (IPTW) was used to overcome treatment selection bias. After IPTW adjustment, the three treatment groups were no longer different for most baseline parameters including those deemed to potentially influence treatment selection, such as tumour size and number,  $\alpha$ -fetoprotein (AFP) and severity of underlying liver disease (baseline characteristics before and after IPTW adjustment are in the online supplementary materials).

After a median follow-up of 41.2 months, 114 patients died, 103 had an active tumour and 11 were tumour free. One hundred and fifty-three patients recurred. The 3-year and 5-year recurrence-free survival (RFS) rates were 82.5%, 79.4% in the LT group, 43.8%, 30.1% in the LR group and 21.2%, 14.5% in the LA group, respectively ( $p < 0.001$ ). The 3-year and 5-year overall survival (OS) rates were 85.0%, 79.4% in the LT group, 69.7%, 49.4% in the LR group and 57.4%, 31.3% in the LA group, respectively ( $p < 0.001$ ). The OS of LA was significantly higher than LR in the subgroup of multiple tumours  $\leq 3$  cm, but lower than LR in other two subgroups with solitary tumour. Comparison results of RFS and OS among the three treatment groups before and after IPTW adjustment were

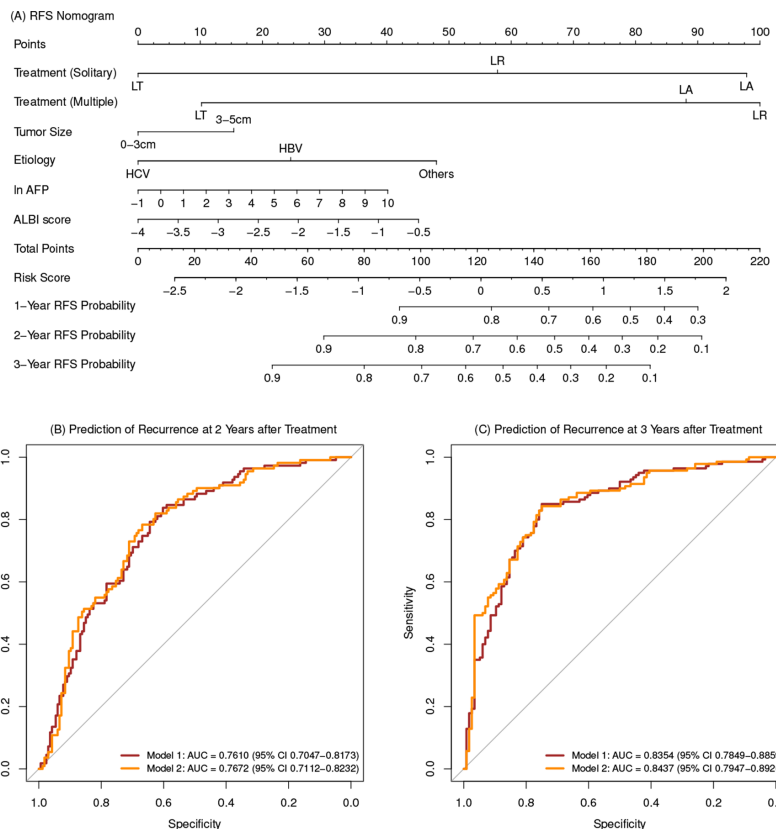
## Individualised tailored assessment of therapeutic alternatives for HCC patients within the Milan criteria

We read with interest the leading article by Gerbes *et al*<sup>1</sup> published in Gut. This

**Table 1** Multivariate analysis for RFS and OS

Covariates	RFS				OS			
	Before IPTW-adjustment		After IPTW-adjustment		Before IPTW-adjustment		After IPTW-adjustment	
	HR (95% CI)	P value	HR (95% CI)	P value	HR (95% CI)	P value	HR (95% CI)	P value
<b>Solitary</b>								
LR versus LT	3.79 (1.93 to 7.46)	<0.001	3.66 (1.80 to 7.44)	<0.001	2.33 (1.10 to 4.91)	0.027	1.62 (0.74 to 3.55)	0.226
LA versus LT	9.56 (5.11 to 17.89)	<0.001	10.28 (5.22 to 20.23)	<0.001	6.42 (3.34 to 12.31)	<0.001	6.07 (3.13 to 11.75)	<0.001
LA versus LR	2.52 (1.60 to 3.98)	<0.001	2.81 (1.75 to 4.50)	<0.001	2.76 (1.55 to 4.92)	<0.001	3.74 (2.00 to 7.02)	<0.001
<b>Multiple</b>								
LR versus LT	7.94 (3.19 to 19.75)	<0.001	12.40 (4.60 to 33.44)	<0.001	5.56 (2.31 to 13.36)	<0.001	4.04 (1.78 to 9.16)	<0.001
LA versus LT	6.04 (2.36 to 15.44)	<0.001	7.14 (2.47 to 20.67)	<0.001	2.38 (0.92 to 6.18)	0.075	1.79 (0.71 to 4.52)	0.219
LA versus LR	0.76 (0.40 to 1.46)	0.409	0.58 (0.29 to 1.14)	0.115	0.43 (0.20 to 0.90)	0.025	0.44 (0.20 to 0.98)	0.043
<b>Operation</b>								
LT: multiple versus solitary	1.27 (0.46 to 3.49)	0.649	0.75 (0.25 to 2.25)	0.605	1.43 (0.56 to 3.66)	0.461	1.56 (0.65 to 3.79)	0.322
LR: multiple versus solitary	2.65 (1.48 to 4.74)	0.001	2.53 (1.46 to 4.38)	<0.001	3.40 (1.77 to 6.56)	<0.001	3.90 (1.94 to 7.84)	<0.001
LA: multiple versus solitary	0.80 (0.44 to 1.45)	0.458	0.52 (0.28 to 0.96)	0.035	0.53 (0.27 to 1.04)	0.065	0.46 (0.22 to 0.96)	0.038
<b>Gender (male)</b>								
					1.99 (1.14 to 3.47)	0.016	2.65 (1.40 to 5.03)	0.003
<b>Aetiology</b>								
HCV versus HBV	0.57 (0.26 to 1.26)	0.164	0.65 (0.28 to 1.52)	0.318	0.81 (0.34 to 1.95)	0.643	0.93 (0.38 to 2.27)	0.880
Others versus HBV	1.72 (1.05 to 2.80)	0.031	1.80 (1.06 to 3.06)	0.029	2.47 (1.43 to 4.27)	0.001	2.21 (1.21 to 4.04)	0.010
Others versus HCV	3.03 (1.25 to 7.35)	0.014	2.78 (1.07 to 7.21)	0.035	3.03 (1.15 to 8.02)	0.025	2.37 (0.86 to 6.48)	0.094
ln(AFP) (ng/mL)	1.09 (1.00 to 1.18)	0.039	1.08 (0.99 to 1.18)	0.078				
ALBI score	1.35 (1.03 to 1.76)	0.031	1.37 (1.04 to 1.82)	0.027	1.51 (1.12 to 2.02)	0.006	1.35 (1.00 to 1.83)	0.051
Tumour size (cm) (3–5 vs ≤3)	1.43 (0.97 to 2.11)	0.075						

Variables that achieved significance at the 0.1 level in the univariate Cox proportional hazards (PH) model were included in the multivariate analysis. Statistical analyses were performed using R V.3.5.2, and p<0.05 was considered statistically significant.  
AFP,  $\alpha$ -fetoprotein; ALBI, albumin-bilirubin; OS, overall survival; PH, proportional hazards; RFS, recurrence-free survival.




**Figure 1** Nomogram and ROC of the two models. (A) Nomogram of recurrence prediction based on model 1. (B) ROC of the 2-year recurrence prediction based on model 1 and model 2. (C) ROC of the 3-year recurrence prediction based on model 1 and model 2. AFP,  $\alpha$ -fetoprotein; ALBI, albumin-bilirubin; AUC, area under the curve; LA, local ablation; LR, liver resection; LT, liver transplantation; RFS, recurrence-free survival; ROC, receiver operating characteristic.

found similar (in the online supplementary materials).

Multivariate analyses of all cohort before and after IPTW adjustment were detailed in table 1. A nomogram for RFS was derived from the final multivariate model (model 1) composing of tumour number, tumour size, treatment allocation, aetiology, AFP and albumin-bilirubin score (figure 1A). Another nomogram for RFS was derived from the final multivariate model after IPTW adjustment (model 2). Cross-validation was performed and the discrimination ability of 2-year and 3-year RFS prediction for the two models was obtained (figure 1B and C). Recurrence risk stratifications based on the two models were classified into low-risk and high-risk probability for each treatment allocation and were differentiated well. The algorithm based on model 1 was converted as a preliminary recurrence prediction prognosis calculator in website: <https://yingwu.shinyapps.io/recur-pred/>. RFS nomogram for model 2 and Kaplan-Meier curves of recurrence risk stratification for each treatment are presented in the online supplementary materials.

In conclusion, although retrospective in nature, our study is the first to explore the recurrence prediction model which showed feasibility as an individualised assessment of therapeutic alternatives to assist with MDT decision-making for HCC patients within the MC. Future multicentre studies with larger

numbers are warranted to validate the results of our study.

Ningning Zhang,<sup>1,2</sup> Wentao Jiang,<sup>3</sup> Yamin Zhang,<sup>1</sup> Tian-Qiang Song,<sup>4</sup> Jiayu Lv,<sup>5</sup> Jie Gu,<sup>5</sup> Ying Wu,<sup>6</sup> Jing Qian,<sup>7</sup> Dazhi Tian,<sup>3</sup> Qingjun Guo,<sup>3</sup> Li Zhang,<sup>3</sup> Jisan Sun,<sup>3</sup> Yan Xie,<sup>3</sup> Zhenglu Wang,<sup>3</sup> Xin Sun,<sup>3</sup> Zhongfang Yan,<sup>7</sup> Yonghe Zhou,<sup>7</sup> Jianyong Liu,<sup>7</sup> Yibo Qiu,<sup>5</sup> Bing Yang,<sup>3</sup> Zhongyang Shen,<sup>3</sup> Wei Lu <sup>2,3</sup>

<sup>1</sup>Department of Hepatobiliary Surgery, Tianjin First Central Hospital, Tianjin Key Laboratory for Organ Transplantation, Tianjin, China

<sup>2</sup>Liver Cancer Center, Tianjin Medical University Cancer Institute and Hospital, Key Laboratory of Cancer Prevention and Therapy, Tianjin's Clinical Research Center for Cancer, National Clinical Research Center for Cancer, Tianjin, China

<sup>3</sup>Department of Liver Transplantation, Tianjin First Center Hospital, Tianjin Key Laboratory for Organ Transplantation, Key Laboratory of Transplantation, Chinese Academy of Medical Sciences, Tianjin, China

<sup>4</sup>Department of Hepatobiliary Surgery, Tianjin Medical University Cancer Institute and Hospital, National Clinical Research Center for Cancer, Key Laboratory of Cancer Prevention and Therapy, Tianjin, China

<sup>5</sup>The First Central Clinical College of Tianjin Medical University, Tianjin, China

<sup>6</sup>School of Statistics and Data Science, Nankai University, Key Laboratory for Medical Data Analysis and Statistical Research of Tianjin, Tianjin, China

<sup>7</sup>Tianjin Second People's Hospital, Tianjin Medical Research Institute of Liver Disease, Tianjin, China

**Correspondence to** Dr Wei Lu, Liver Cancer Center, Tianjin Medical University Cancer Institute and Hospital, Tianjin 300060, China; mail4luwei@163.com and Dr Zhongyang Shen, Department of Liver Transplantation, Tianjin First Center Hospital, Tianjin Key Laboratory for Organ Transplantation, Key Laboratory of Transplantation, Chinese Academy of Medical Sciences, Tianjin, China; zhongyangshen@vip.sina.com

**Acknowledgements** We acknowledge all the hospitals, departments and practitioners that participated in helping with the data collection and documentation.

**Contributors** NZ, WJ, YZ, TS, JL, JG, YW and JQ contributed equally to this study. Study concept: WL, ZS and NZ. Study design: WL, ZS, NZ, WJ, YZ, T-QS and JQ. Data collection: JL, JG, YQ, BY, DT, QG, LZ, JS, YX, XS, ZY, YZ and JL. Analysis and interpretation of data: YW, NZ, WJ, YZ, T-QS, JQ and ZW. Manuscript drafting: NZ, YW, JL and JG. Revising the manuscript: NZ, WL, WJ, YZ, T-QS and JQ. Acquisition and review of data, provision of critical comments or suggestions: all authors. Manuscript final version approval: all authors.

**Funding** This work was supported by Key project of Science and Technology, Tianjin Municipal Science and Technology Bureau (19YFZCSY00020).

**Competing interests** None declared.

**Patient consent for publication** Not required.

**Ethics approval** This study was conducted with the approval of Tianjin First Center Hospital Medical Ethics Committee and Tianjin Second People's Hospital Medical Ethics Committee, Tianjin, China.

**Provenance and peer review** Not commissioned; internally peer reviewed.



OPEN ACCESS

**Open access** This is an open access article distributed in accordance with the Creative Commons Attribution Non Commercial (CC BY-NC 4.0) license, which permits others to distribute, remix, adapt, build upon this work non-commercially, and license their derivative works on different terms, provided the original work is properly cited, appropriate credit is given, any changes made indicated, and the use is non-commercial. See: <http://creativecommons.org/licenses/by-nc/4.0/>.

© Author(s) (or their employer(s)) 2020. Re-use permitted under CC BY-NC. No commercial re-use. See rights and permissions. Published by BMJ.

► Additional material is published online only. To view please visit the journal online (<http://dx.doi.org/10.1136/gutjnl-2019-320073>).

NZ, WJ, YZ, T-QS, JL, JG, YW and JQ are joint first authors.



**To cite** Zhang N, Jiang W, Zhang Y, *et al*. *Gut* 2020;**69**:1893–1895.

Received 13 October 2019

Accepted 25 October 2019

Published Online First 20 November 2019

*Gut* 2020;**69**:1893–1895. doi:10.1136/gutjnl-2019-320073

**ORCID iD**

Wei Lu <http://orcid.org/0000-0001-9410-6639>

## REFERENCES

- Gerbes A, Zoulim F, Tilg H, *et al*. Gut roundtable meeting paper: selected recent advances in hepatocellular carcinoma. *Gut* 2018;**67**:380–8.
- Galle PR, Forner A, Llovet JM, *et al*. EASL clinical practice guidelines: management of hepatocellular carcinoma. *J Hepatol* 2018;**69**:182–236.
- Tateishi R *et al*. Proposal of a new prognostic model for hepatocellular carcinoma: an analysis of 403 patients. *Gut* 2005;**54**:419–25.
- De Toni EN, Schlesinger-Raab A, Fuchs M, *et al*. Age independent survival benefit for patients with hepatocellular carcinoma (HCC) without metastases at diagnosis: a population-based study. *Gut* 2020;**69**:168–76.