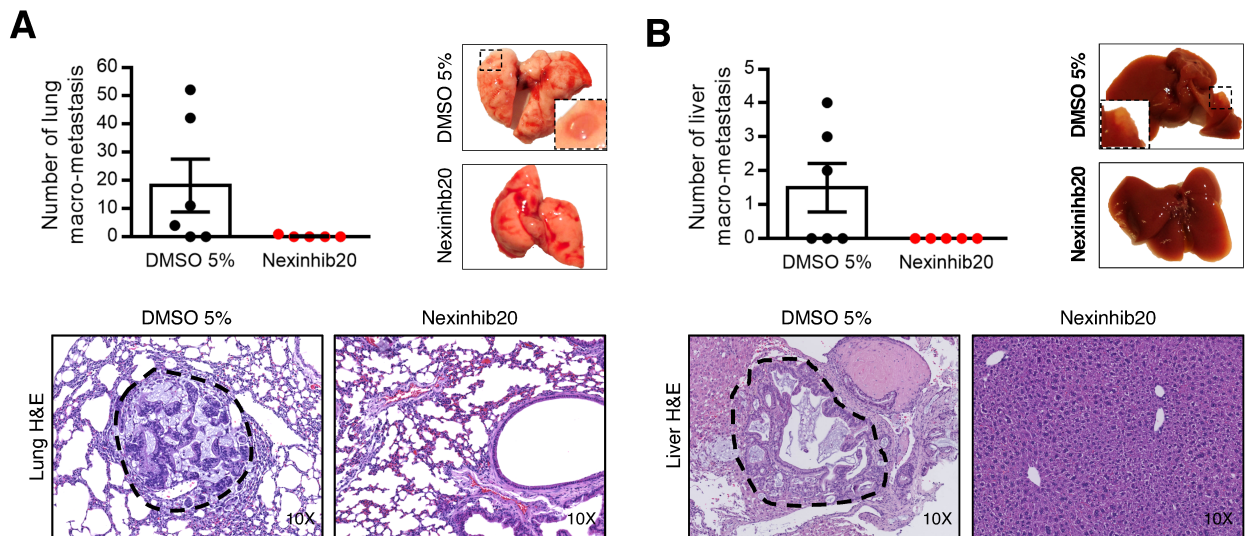


## Supplementary Figure 6



**Supplementary Figure 6 (related to Figure 4). Impairment of extracellular vesicles secretion affects PDAC progression in PDX models. (A-B)** Quantification of the number of lung (A) and liver (B) macro-metastasis in CSC proficient (CSC were sorted from PDX tumor and treated *ex vivo* with DMSO 5% before injection with their NSCC counterparts, n=6) and impaired EVs secretion (CSC were sorted from PDX tumor and treated *ex vivo* with Nexinhib20 (1 $\mu$ M) before injection with their NSCC counterparts, n=5) groups (Mann Whitney test). Representative photos of lungs and liver of both groups (right). H&E stainings of metastases in the lungs and liver (bottom). Dashed lines identify site of metastasis. Data are mean $\pm$ SEM.