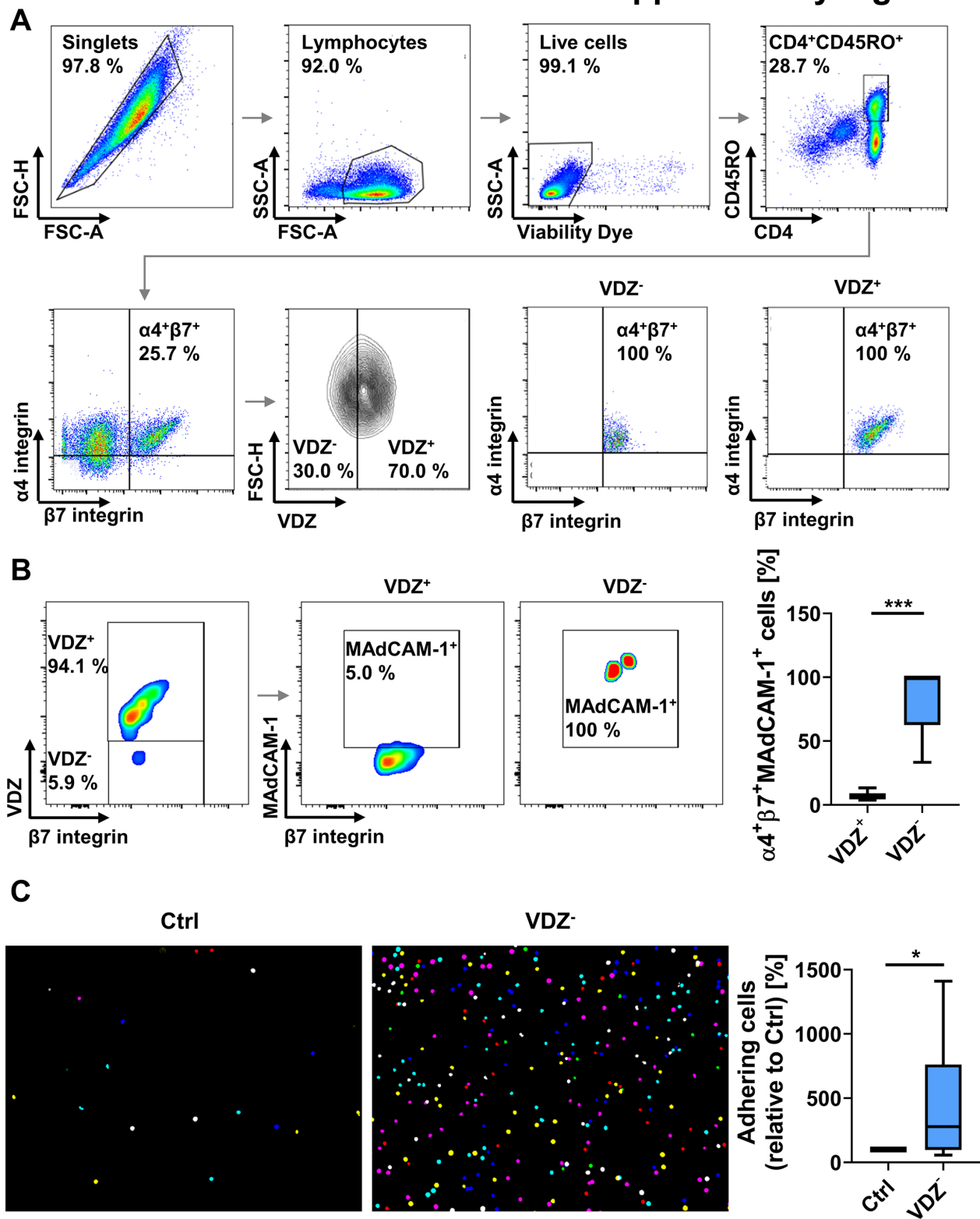


Supplementary Figure 7



Supplementary Figure 7: Quality control of FACS-isolated CD4⁺CD45RO⁺α4⁺β7⁺ VDZ⁺ and VDZ⁻ cells.

(A) Representative gating strategy and subsequent re-analysis. Cells were defined as CD4⁺CD45RO⁺α4⁺β7⁺VDZ⁺ and CD4⁺CD45RO⁺α4⁺β7⁺VDZ⁻ cells.

(B) Representative (left) and quantitative (right) flow cytometry of α4⁺β7⁺VDZ⁺MAdCAM⁺ and α4⁺β7⁺VDZ⁻MAdCAM⁺ T_{Reg} cells incubated with different concentrations of fluorescently labelled VDZ and subsequently with fluorescently labelled MAdCAM-1. n = 8 healthy donors.

(C) Dynamic cell adhesion assays with VDZ⁻ cells. Left panels: Representative microscopic images of adhering cells (overlay of 8 counted high-power fields). Right panels: Quantification of adhering cells relative to Ctrl. n = 9 (cells purified from leukocyte cones).

Statistical comparisons were performed using paired t-test (B) and Student's t-test (C).