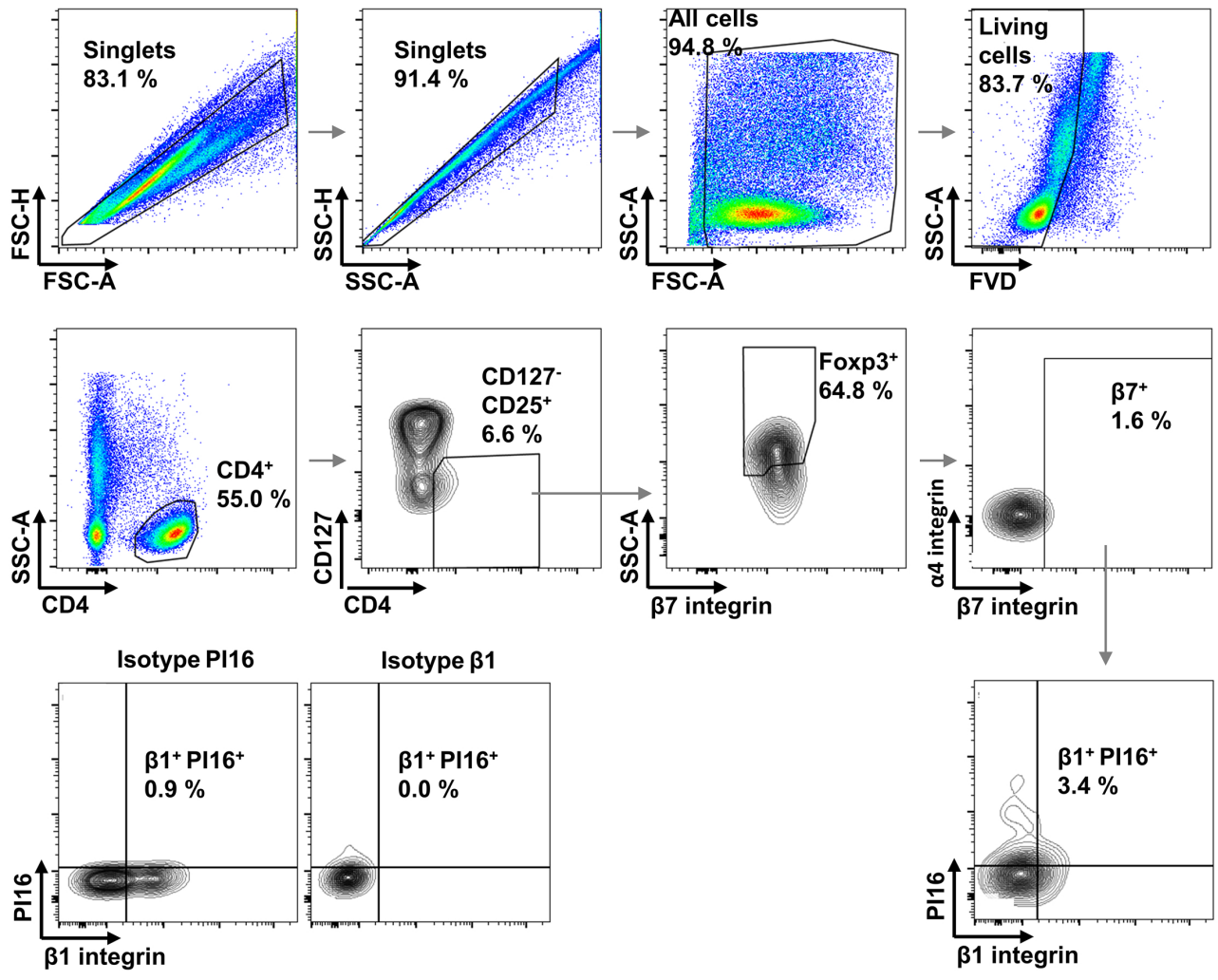


Supplementary Figure 10



Supplementary Figure 10: Representative gating on CD4⁺CD25⁺CD127⁻Foxp3⁺β7⁺ β1⁺PI16⁺ T_{Reg} cells in the lamina propria.

Following doublet exclusion and gating on vital cells based on forward and sideward scatter and Fixable viability Dye (FVD), we selected CD4⁺ T cells and defined T_{Reg} cells as CD25⁺CD127^{low}Foxp3⁺. Next we gated on β7⁺ cells and determined β1⁺PI16⁺ and β1⁻PI16⁻ cells in this subset (controls shown).