

a

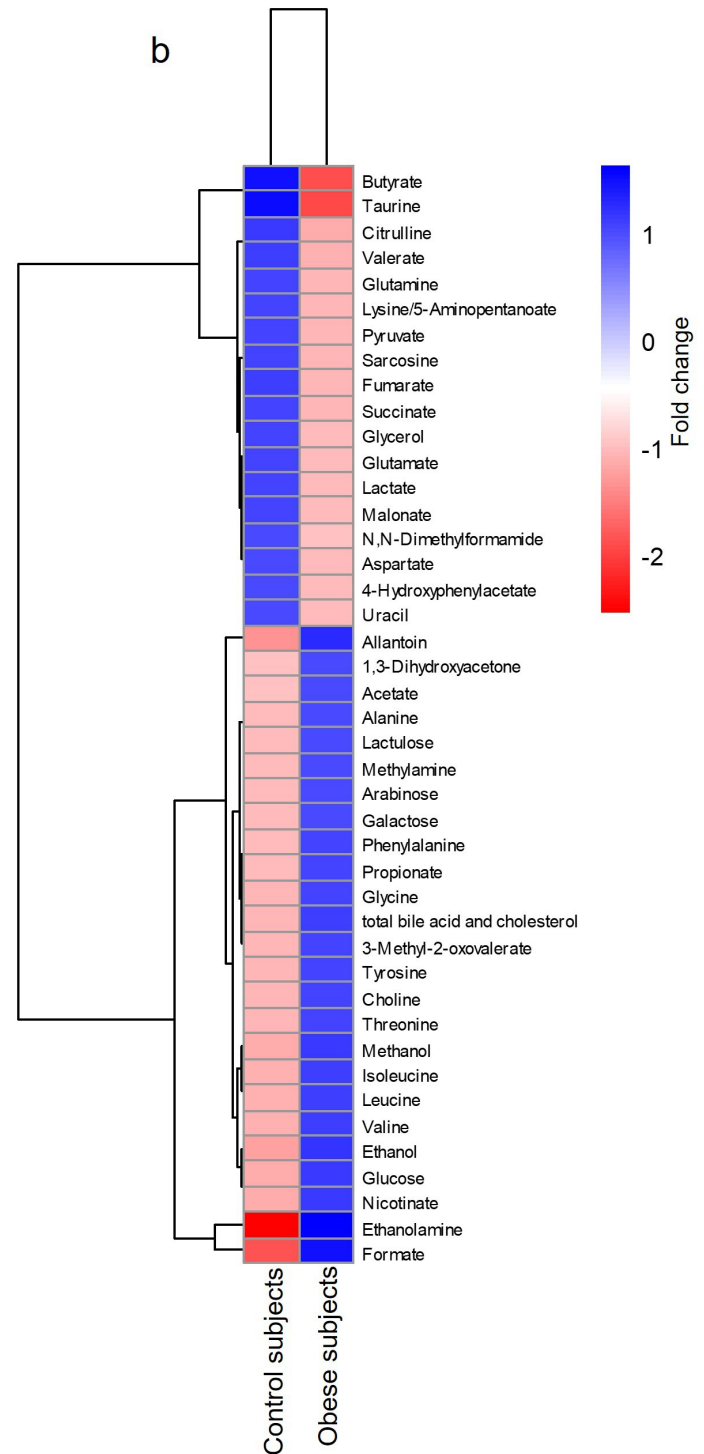
## BMI of human obese subjects

Measures	Control	Obese
Participants (n)	10	10
Age (years)	31.8±10.5	57.3±7.2
Gender		
Female	4	8
Male	6	2
Body mass index (kg/m <sup>2</sup> )	22.8±2.1	36.29±4.7

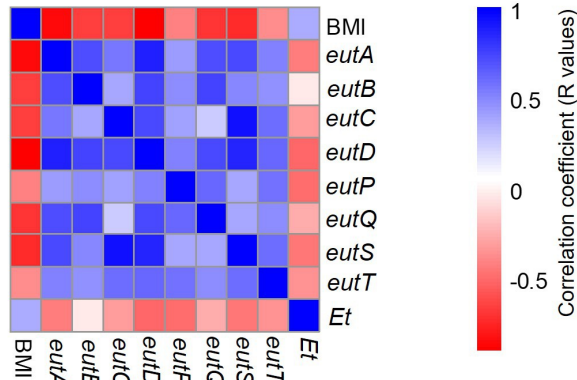
Values are presented as mean ± standard deviation.

Body mass index was calculated using body weight in kg and height in meters.

b



c



**Supplementary Figure S9.** a) Demographics of human subjects from whom fecal samples were collected. b) Heatmap depicting the metabolites in lean controls versus obese human subjects. c) Correlation heatmap between ethanolamine (Et) and ethanolamine utilizing (*Eut*) operon genes in human fecal samples.