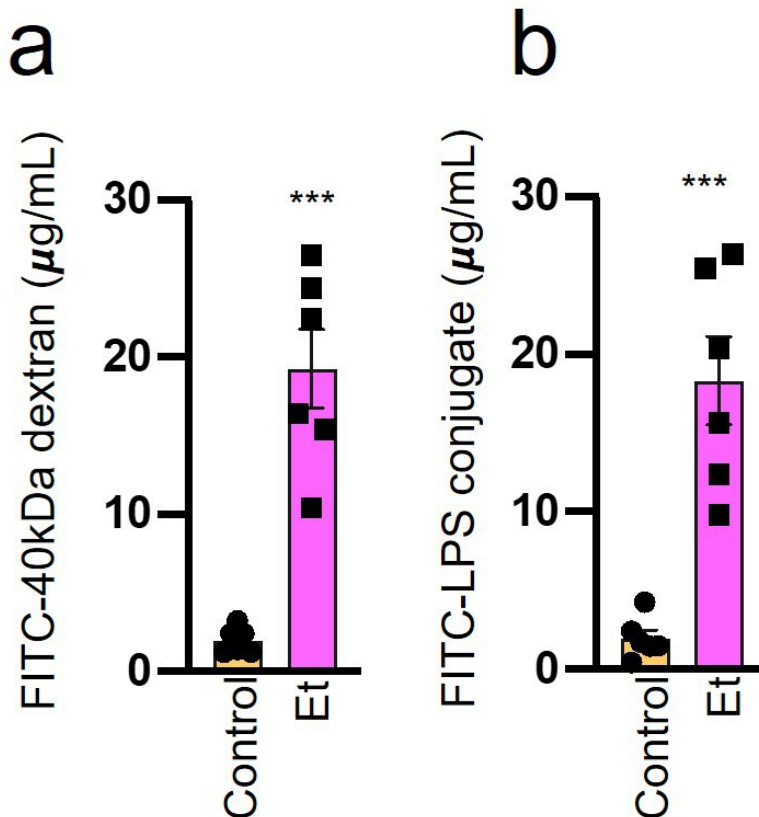


Mishra et al Supplementary Figure S6



Supplementary Figure S6. a,b) Ethanolamine (Et) treatment significantly increased the permeability of FITC (40kDa and LPS conjugate)- dextran (a,b) in the monolayers of Caco-2 cells. Values presented are the mean of Caco-2 culture experiments performed in triplicates and repeated 2-3 times and error bars as the standard error of means. P values with ***<0.001 are statistically significant calculated by the t-test.