



OPEN ACCESS

ORIGINAL ARTICLE

Shanghai fever: a distinct *Pseudomonas aeruginosa* enteric disease

Chih-Hsien Chuang,¹ Yi-Hsin Wang,² Hsin-Ju Chang,² Hsiu-Ling Chen,² Yhu-Chering Huang,³ Tzou-Yien Lin,³ Egon A Ozer,⁴ Jonathan P Allen,⁵ Alan R Hauser,⁵ Cheng-Hsun Chiu²

► Additional material is published online only. To view please visit the journal online (<http://dx.doi.org/10.1136/gutjnl-2013-304786>).

¹Graduate Institute of Clinical Medical Sciences, Chang Gung University College of Medicine, Taoyuan, Taiwan

²Molecular Infectious Diseases Research Center, Chang Gung Memorial Hospital, Chang Gung University College of Medicine, Taoyuan, Taiwan

³Division of Pediatric Infectious Diseases, Department of Pediatrics, Chang Gung Children's Hospital, Chang Gung University College of Medicine, Taoyuan, Taiwan

⁴Division of Infectious Diseases, Department of Medicine, Northwestern University, Chicago, Illinois, USA

⁵Department of Microbiology and Immunology, Northwestern University, Chicago, Illinois, USA

Correspondence to

Dr Cheng-Hsun Chiu, Division of Pediatric Infectious Diseases, Department of Pediatrics, Chang Gung Children's Hospital, 5 Fu-Hsin Street, Kweishan, Taoyuan 333, Taiwan; chchiu@adm.cgmh.org.tw

Received 4 March 2013

Revised 18 July 2013

Accepted 20 July 2013

ABSTRACT

Background Shanghai fever, a community-acquired enteric illness associated with sepsis caused by *Pseudomonas aeruginosa*, was first described in 1918. The understanding of Shanghai fever is incomplete.

Objective To delineate the clinical features and to examine the host and microbial factors associated with Shanghai fever.

Methods We prospectively enrolled 27 consecutive previously healthy children with community-acquired *P aeruginosa* enteritis and sepsis between July 2003 and June 2012. An immunological investigation, including measurement of serum immunoglobulin levels and lymphocyte subpopulations, was performed. The clonal relationship of bacterial isolates was determined by multilocus sequence typing (MLST) and the virulence of isolates was measured using cellular and animal models.

Results The median age of the patients was 7 months; 24 (89%) were aged <1 year. The most common clinical manifestations were fever (100%), diarrhoea (96%) and shock (81%). Leucopenia, thrombocytopenia, high C-reactive protein levels, coagulopathy and hypoalbuminaemia were the key laboratory findings. Necrotising enteritis with or without bowel perforation, ecthyma gangrenosum and seizures were main complications. The death rate was 15%. No common primary immune deficiency was identified. MLST genotypes indicated that isolates from Shanghai fever were non-clonal, but they shared similar phenotypes which were invariably cytotoxic, invasive and adhesive in cellular experiments and caused prolonged gut colonisation and more death than respiratory and laboratory control strains in mice.

Conclusions Shanghai fever is a sporadic community-acquired disease of previously healthy infants that manifests as sepsis associated with *P aeruginosa* enteric disease. Both host and microbial factors play a role in pathogenesis.

INTRODUCTION

Pseudomonas aeruginosa is one of the most important opportunistic pathogens in humans. Patients with chronic disease and compromised immune systems, such as cystic fibrosis, haematological malignancy, immunodeficiency or burns, are at greater risk of infection.^{1 2} The bloodstream and respiratory and urinary tracts are the common infection sites. Despite reports of antibiotic-associated diarrhoea caused by *P aeruginosa*, it is generally not considered a common cause of infectious diarrhoea in healthy hosts.^{3 4}

Significance of this study

What is already known about this subject?

- *Pseudomonas aeruginosa* is not a common enteric pathogen in healthy hosts.
- Shanghai fever is a sepsis accompanied by enteric disease caused by *P aeruginosa*.
- Hypogammaglobulinaemia is the most common underlying primary immune deficiency in previously healthy children with *P aeruginosa* sepsis.

What are the new findings?

- The clinical features of Shanghai fever in a cohort of patients were clearly delineated.
- No common primary immune deficiency was found in infants with Shanghai fever.
- The high virulence of *P aeruginosa* strains derived from patients with Shanghai fever were confirmed by cellular and animal experiments.
- Both host and microbial factors play a role in the pathogenesis.

How might it impact on clinical practice in the foreseeable future?

- Understanding the mechanism, by which a specific group of virulent *P aeruginosa* causes enteric infection and sepsis in infants, may lead to increased awareness of the disease such that early initiation of effective treatment might be expected to reduce mortality and morbidity.

Diarrhoea caused by *P aeruginosa* is seen almost exclusively in patients with prolonged antibiotic exposure.^{3 4} On the other hand, enteric disease associated with sepsis caused by *P aeruginosa* has been documented as early as 1918 with the description of 'Shanghai fever', a syndrome comprising fever, diarrhoea and sepsis.^{5 6} Cases of community-acquired *P aeruginosa* sepsis were subsequently reported in children without pre-existing conditions, primarily from Taiwan, Hong Kong and China.⁷⁻¹⁵ The disease usually leads to serious complications and is associated with high mortality.⁷⁻¹⁵ After more than 90 years, our understanding on Shanghai fever is still incomplete and its pathogenesis remains unknown. This study aimed to delineate the clinical features of Shanghai fever and to examine the host and microbial factors associated with the infection.

To cite: Chuang C-H, Wang Y-H, Chang H-J, et al. Gut Published Online First: [please include Day Month Year] doi:10.1136/gutjnl-2013-304786

PATIENTS AND METHODS

Patients

The following criteria were used to diagnose Shanghai fever: (1) community-onset diarrhoea with fever, (2) sepsis and (3) growth of *P aeruginosa* from blood or another sterile body site. Twenty-seven consecutive children who met criteria for Shanghai fever in Chang Gung Children's Hospital in Taiwan from July 2003 to June 2012 were evaluated. All were healthy and without pre-existing conditions before the infection. Demographic, clinical and laboratory data of the patients were analysed. The institutional review board of the Chang Gung Memorial Hospital approved the study.

Standard immunological studies

Immunoglobulin levels, including IgG, IgM, IgA and IgE, were checked in all patients except two who died upon arrival at the hospital. Flow cytometry immunophenotyping of lymphocyte subpopulations was performed in 21 patients. All immunological studies were performed at the stage of recovery. The results were interpreted based on age-matched reference data.^{16 17}

Bacterial strains

Of the 25 *P aeruginosa* isolates obtained from patients with Shanghai fever, 17 were available for analysis. Sixteen *P aeruginosa* isolates from the respiratory tracts of patients with nosocomial pneumonia were randomly collected and used for comparison. The cytotoxic *P aeruginosa* laboratory strains PA103 and PA14 and the non-cytotoxic but invasive strain PAO1 were used as phenotypic controls in cellular and animal experiments.¹⁸ *Salmonella enterica* serovar Typhimurium strain SL1344 was used as a positive control for the Madin–Darby canine kidney (MDCK) cell monolayer penetration assays.¹⁸ Non-invasive rabbit enterotoxigenic *Escherichia coli* strain RDEC-1 was used as a negative control.¹⁸

Antimicrobial susceptibility test and multilocus sequence typing (MLST)

The disk diffusion method was performed to determine the susceptibility of clinical *P aeruginosa* isolates to the following antimicrobial agents: gentamicin, amikacin, aztreonam, ceftazidime, cefepime, imipenem, meropenem, piperacillin and ciprofloxacin.¹⁹ MLST was performed as described by Curran *et al.*²⁰ PCR products were sequenced by a DNA auto-sequencer and the sequences were compared with the *P aeruginosa* MLST database (<http://www.pubmlst.org/paeruginosa>) for allelic numbers. The isolates were designated a sequence type (ST) number according to their allelic profiles. STs with identical alleles in five or more loci were considered clonal clusters.

Cytotoxicity, penetration and adhesion assays

In vitro cytotoxicity of bacterial isolates to MDCK cells was evaluated by the method described by Hirakata *et al.*¹⁸ MDCK cells in Dulbecco's modified Eagle medium (Gibco, Grand Island, New York, USA) with 10% fetal bovine serum were seeded into 24-well tissue culture plates with a density of 1.5×10^5 per well. After 4 days of incubation at 37°C and 5% CO₂, the cells reached a density of 1×10^6 /well. Each bacterial isolate was added with a multiplicity of infection (MOI) of 100. Cytotoxicity was quantified by measurement of lactate dehydrogenase (LDH) in supernatants released from MDCK cells with the CytoTox 96 kit (Promega, Madison, Wisconsin, USA) 8 h after infection. The LDH value was given as a percentage, with

100% representing the amount of LDH released from cells completely lysed by the lysis solution in 45 min. The percentages were calculated according to the manufacturer's instructions. The method used for in vitro cytotoxicity against neutrophils was a modification of that used by El Solh *et al.*²¹ Neutrophils were collected from the whole blood of healthy volunteers and purified by density gradient centrifugation. The viability of neutrophils determined by trypan blue staining was >95%. Neutrophils were resuspended in RPMI-1640 (Roswell Park Memorial Institute, Gibco, Grand Island, New York, USA) medium. Approximately 5×10^6 neutrophils and bacterial isolates with an MOI of 100 were co-incubated in each well. Cytotoxicity was assessed 2 h after infection.

To assess the invasive phenotype of the strains, the MDCK cell monolayer penetration assay was used as previously described.¹⁸ Bacteria in basolateral medium were counted by plating appropriate dilutions at 1, 3, 6 and 8 h after inoculation. Strain RDEC-1 was used as a control to ensure the monolayer integrity.¹⁸ For adhesion assays, Caco-2 cells were seeded into six-well plates at a density of 1.5×10^5 cells/well. After 4 days of incubation, the cells grew to a density of 1.5×10^6 /well. Bacteria were added to each well at an MOI of 100 and incubated for 1 h at 37°C. Non-adherent bacteria were eliminated by washing twice with phosphate-buffered saline. Cells were lysed with 0.05% Triton X-100 solution for 10 min. Bacteria were counted by serial dilution and plating. All the cellular studies were performed in three independent experiments.

Type III secretion system (TTSS)-encoding toxin genes

The PCR and sequencing were carried out to detect the presence of TTSS-encoding toxin genes using specific primers and methods described previously.²² The following genes were measured: *exoU*, *exoS*, *exoT* and *exoY*.

Animal studies

The 50% lethal doses (LD₅₀) of two Shanghai fever isolates (S1 and S6) and the three control strains (PAO1, PA103 and PA14) were determined with the following procedure. Bacterial strains were cultured overnight with shaking at 37°C and then further subcultured for 3 h in fresh medium with shaking at 37°C. Subcultures were collected by centrifugation, then washed and diluted to appropriate ODs in phosphate-buffered saline. Bacterial suspension (50 µL) was injected into the tail veins of 6–8 week-old BALB/c mice. Each bacterial isolate was injected into a minimum of 10 mice. Mice were monitored every 8 h over the subsequent 96 h. Serial dilutions of each bacterial inoculum were plated onto selective media to determine the number of colony forming units (CFUs) injected into each group of mice. Mice showing signs of severe illness, as indicated by hypopnoea, tachypnoea, ruffled fur or absence of activity, were killed and scored as dead. The LD₅₀ for each strain was calculated according to the method of Reed and Muench.²³ Three independent experiments were performed. Approval from the animal care and use committee of Northwestern University was obtained before starting these experiments.

Fecal shedding of *P aeruginosa* in mice after oral challenge was also evaluated with the following procedure. *P aeruginosa* strains used in this experiment included the three laboratory strains (PAO1, PA103 and PA14), two respiratory isolates (R3 and R5) and five Shanghai fever isolates (S1, S2, S4, S6 and S8). *P aeruginosa* isolates were selected for this experiment based upon their adherence to Caco-2 cells: S1, S4 and R5 showed low adherence (below median), while S2, S6, S8 and R3 showed high adherence (above median). Five-week-old BALB/c

mice weighing 20–25 g were used in the experiments. Individual litters (five mice per litter) were assigned to receive inoculation of one bacterial isolate. Mice were pretreated with clindamycin 0.6 mg intramuscularly daily for 5 days before bacterial challenge. A total of 0.1 mL of 0.45% sterile saline with or without a bacterial inoculum of 1×10^8 CFUs/mL was delivered to the mice through an orogastric tube daily for 3 days. To monitor bacterial shedding, stool samples were collected daily from individual mice by anal stimulation and plated on *Pseudomonas* isolation agar (Becton, Dickinson and Company, Sparks, Maryland, USA). The mice were observed daily. The study was terminated 30 days after bacterial inoculation. The fecal shedding study was performed independently three times. The institutional animal care and use committee of Chang Gung University approved the animal experiments.

Statistical analysis

The Student t test was used for continuous variables with normal distribution and the Mann–Whitney U test was used for continuous variables without normal distribution. Fisher's exact test or χ^2 test was used for categorical data. Pearson correlation was used to measure the linear association between fecal shedding and adhesion. All reported p values were two-sided; $p < 0.05$ was considered statistically significant.

RESULTS

Clinical data

The patients had a median age of 7 months (range 3–25 months) and 24 (89%) were aged < 1 year. The male-to-female ratio was 17:10. The median time from onset of first symptom to sepsis was 4 days (range 1–7 days). The median duration of fever was 8 days (range 1–26 days) and the median length of hospitalisation was 22 days (range 1–122 days). Seventeen (63%) patients developed the disease between July and October.

Fever and diarrhoea were the most common clinical presentations (table 1). Twenty-three patients (85%) had severe necrotising enteritis, as defined and reported previously,¹¹ and nine (33%) had bowel perforation requiring immediate surgical intervention. Intraoperative findings showed widespread patchy necrosis with fibrin coating of the small intestine or colon (figure 1A). Of patients with ecthyma gangrenosum (figure 1B),

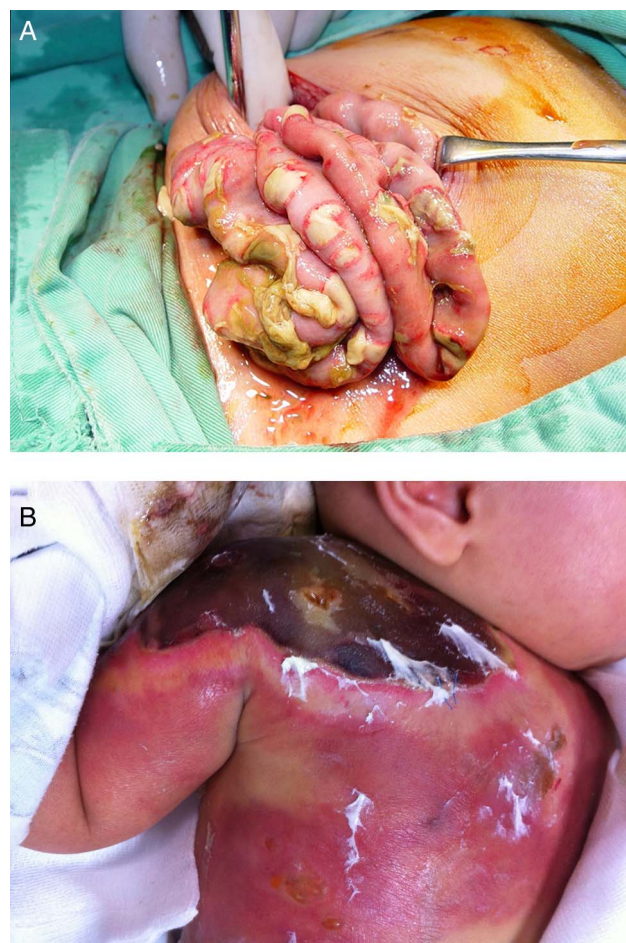


Figure 1 Pictures of necrotising enteritis and ecthyma gangrenosum. (A) Widespread patchy necrosis with fibrin coating on the small intestine. (B) A huge and extensive ecthyma gangrenosum.

10 had multiple sites affected. Seven patients (26%) had seizure; all of them had hyponatraemia. Two had meningitis with subsequent obstructive hydrocephalus. Both eventually developed severe chronic neurological sequelae, including brain atrophy and hydrocephalus.

Leucopenia, thrombocytopenia, high C-reactive protein (CRP) levels, coagulopathy and hypoalbuminaemia were the characteristic laboratory findings (table 2). Blood was the most common site of isolation for *P aeruginosa*. All the isolates were susceptible to the antimicrobial agents tested. One patient was co-infected with *Salmonella* and one with *Campylobacter jejuni*. Rotavirus antigen testing was performed in 16 patients; only one was positive.

Twenty-three patients (85%) received antipseudomonal antibiotics within 24 h of admission. Twenty-three patients (85%) survived. Three patients (11%) died within 24 h of admission and one (4%) died 3 days after hospitalisation. The four fatal cases (15%) had received antipseudomonal antibiotics on admission. All surviving patients had no severe infection during follow-up. No patient had short bowel syndrome after surgery.

Standard immunological studies

Hypogammaglobulinaemia was seen in five patients (table 3). One had persistently low serum IgG after 6 years of age (596 mg/dL). His IgG subclass was low for IgG1 before 6 years of age but was normal thereafter. His IgA and IgM levels

Table 1 Clinical features of patients with Shanghai fever

Clinical manifestation	Number (%)
Initial presentations	
Fever and diarrhoea	25 (93)
Dyspnoea/cyanosis	2 (7)
Fever	27 (100)
Diarrhoea	26 (96)
Watery	18 (67)
Greenish	12 (44)
Mucoid	11 (41)
Bloody	7 (26)
Vomiting	12 (44)
Dyspnoea	10 (37)
Seizure	7 (26)
Shock	22 (81)
Necrotising enteritis	23 (85)
Bowel perforation	9 (33)
Ecthyma gangrenosum	17 (63)

Table 2 Laboratory findings of patients with Shanghai fever

Laboratory test	Median (range)	The number of patients with abnormal values,* no./total no. (%)
Leucocyte count/mm ³	2800 (900–22 400)	16/27 (59)
Haemoglobin (g/dL)	10.0 (7.3–13.1)	12/27 (44)
Platelet count/mm ³	77 000(1000–334 000)	19/27 (70)
PT (s)	16.9 (11.3–46.7)	13/22 (59)
APTT (s)	53.3 (33.7–120)	14/22 (64)
D-dimer (ng/mL)	1533 (0.25–10 000)	12/17 (71)
C-reactive protein (mg/L)	202 (37–484)	19/27 (70)
AST (U/litre)	41 (12–1164)	9/21 (43)
ALT (U/L)	36 (6–738)	7/20 (35)
BUN (mg/dL)	20 (4–54)	11/24 (46)
Creatinine (mg/dL)	0.6 (0.2–1.9)	14/24 (58)
Albumin (g/dL)	2.5 (1.1–3.5)	17/20 (85)
Sodium (mEq/L)	129 (118–141)	13/26 (50)
Potassium (mEq/L)	4.3 (2.7–6.3)	3/26 (12)
Glucose (mg/L)	141 (3–384)	11/23 (48)
Sites of <i>P aeruginosa</i> isolation		
Blood		25/27 (93)
Stool		11/22 (50)
Cerebrospinal fluid		2/16 (13)
Pus		10/15 (67)
Ascites		8/11 (73)

*The abnormal values are as follows: leucocyte count <4000 mm³; haemoglobin <10 g/dL; platelet count <10⁹/mm³; PT (prothrombin time) >1.5-fold; APTT (activated partial thromboplastin time) >1.5-fold; D-dimer >500 ng/mL; C-reactive protein >150 mg/L; AST (aspartate aminotransferase) >50 U/liter; ALT (alanine aminotransferase) >50 U/liter; BUN (blood urea nitrogen) >20 mg/dL; creatinine >0.5 mg/dL; albumin <3.0 g/dL; sodium <130 mEq/L; potassium <3.0 mEq/L; glucose >150 mg/dL.

Table 3 Immunological evaluation of patients with Shanghai fever

Variables*	Median (range)	The number of patients with abnormal values (%)†
IgG (mg/dL)	538.0 (147–1610)	5 (20)
IgA (mg/dL)	35.4 (6.6–158)	4 (16)
IgM (mg/dL)	68.9 (21.4–416)	5 (20)
IgE (IU/mL)	56.8 (6.4–1930)	0 (0)
CD3 T lymphocytes	64.0 (32.3–81.1)	3 (14)
CD19 B lymphocytes	21.4 (5.2–62.0)	5 (24)
Natural killer cell	7.6 (1.6–24.9)	4 (19)
CD4 T lymphocytes	43.1 (20.5–54.4)	5 (24)
CD8 T lymphocytes	19.4 (0.7–35.7)	3 (14)
CD4:CD8 ratio	2.3 (0.6–16.7)	5 (24)
Naïve CD4 T lymphocytes	79.8 (36.4–91.6)	3 (14)
Memory CD4 T lymphocytes	18.4 (13.3–46.3)	0 (0)
Naïve CD8 T lymphocytes	90.9 (68.4–97.2)	0 (0)
Memory CD8 T lymphocytes	7.7 (1.6–20.3)	0 (0)
Activated T lymphocytes	13.9 (1.0–33.4)	3 (14)
Memory B lymphocytes‡	1.3 (0.3–4.9)	

*Lymphocyte subpopulations recognised included CD19 B lymphocytes, CD3 T lymphocytes, CD4 T lymphocytes, CD8 T lymphocytes, CD4:CD8 ratio, natural killer cell (CD3/CD16⁺56), naïve CD4 T lymphocytes (CD4/CD45RA), memory CD4 T lymphocytes (CD4/CD45RO), naïve CD8 T lymphocytes (CD8/CD45RA), memory CD8 T lymphocytes (CD8/CD45RO), activated T lymphocytes (HLADR/CD2) and memory B lymphocytes (CD27/CD19). Cells expressing the indicated markers for lymphocytes are shown as percentages.

†Number of patients with decreased levels compared with age-matched reference data.^{16 17}

‡No reference data at this age.

returned to normal at 3 years of age. He did not receive intravenous immunoglobulin replacement therapy or antibiotic prophylaxis during follow-up and had no recurrent severe infection. Serum IgG levels returned to normal in two patients but the remaining two had no follow-up data because one died and the other was lost to follow-up. Three patients had an IgE level >1000 IU/mL but none had characteristic clinical features of hyper-IgE syndrome.

Lymphocyte subpopulation studies (table 3) showed that three patients had a reduced CD3 T lymphocyte count. Their CD4 T lymphocytes were also decreased. One of them also had low activated T lymphocyte counts. Nonetheless, their naïve and memory CD4 and CD8 T lymphocytes were within normal limits. Except for one patient with low CD4, CD8 and activated T lymphocytes counts, patients with low CD4 or CD8 T lymphocytes all had normal memory CD4, CD8 and activated T lymphocytes counts. The percentage of CD19 B lymphocytes was reduced in five patients, only one of whom had hypogammaglobulinaemia. Taken together, no definitive common primary immune deficiency was identified in these patients based upon both laboratory and clinical evaluations. Extremely young age (<1 year) was the only identified host factor predisposing to Shanghai fever.

MLST

MLST analysis of the *P aeruginosa* isolates from the patients with Shanghai fever showed 11 different STs, but none of the STs could be grouped into clonal clusters (see online supplementary figure 1). Five isolates were identified as ST244 and one as ST313. Nine new STs (ST1019–1027) were identified and reported to the *P aeruginosa* MLST database. The MLST patterns of Shanghai fever isolates were diverse, indicating that a single clone of *P aeruginosa* was not responsible for these cases.

Cytotoxicity, penetration and adhesion

The *P aeruginosa* isolates were next evaluated for phenotypes suggestive of enhanced virulence. In the cytotoxicity assay to MDCK cells (figure 2A), 14/17 (82%) isolates from patients with Shanghai fever showed significantly higher cytotoxicity than PAO1 (more than five times higher release of LDH), with 10/17 (59%) having comparable LDH levels to PA103 and PA14. *P aeruginosa* isolates from patients with Shanghai fever were also significantly more cytotoxic than *P aeruginosa* isolates from nosocomial respiratory tract infection ($p<0.0001$). As shown in figure 2B, Shanghai fever isolates also showed higher cytotoxicity to neutrophils.

In penetration assay (figure 2C), 11/17 isolates from patients with Shanghai fever (65%) were detected in the basolateral media 1 h after inoculation. All Shanghai fever isolates and the *S enterica* serovar Typhimurium SL1344 and *P aeruginosa* PAO1, PA103, PA14 strains were detected in the basolateral media 3 h after inoculation, whereas only three respiratory isolates were detected at this time. Shanghai fever strains penetrated the MDCK monolayer more rapidly than respiratory strains ($p<0.0001$). The CFUs of penetrating bacteria were significantly higher with Shanghai fever strains than with respiratory strains ($p=0.009$) and laboratory strains ($p=0.012$) 3 h after inoculation. Shanghai fever isolates penetrated MDCK cells to a greater extent than respiratory and laboratory strains. When *P aeruginosa* isolates and *E coli* strain RDEC-1 were co-incubated with MDCK cells, *P aeruginosa* isolates were detected alone in the basolateral media 1 and 3 h after inoculation. RDEC-1 bacteria were not found in the basolateral media until 6 h later, suggesting that *P aeruginosa* isolates transcytosed

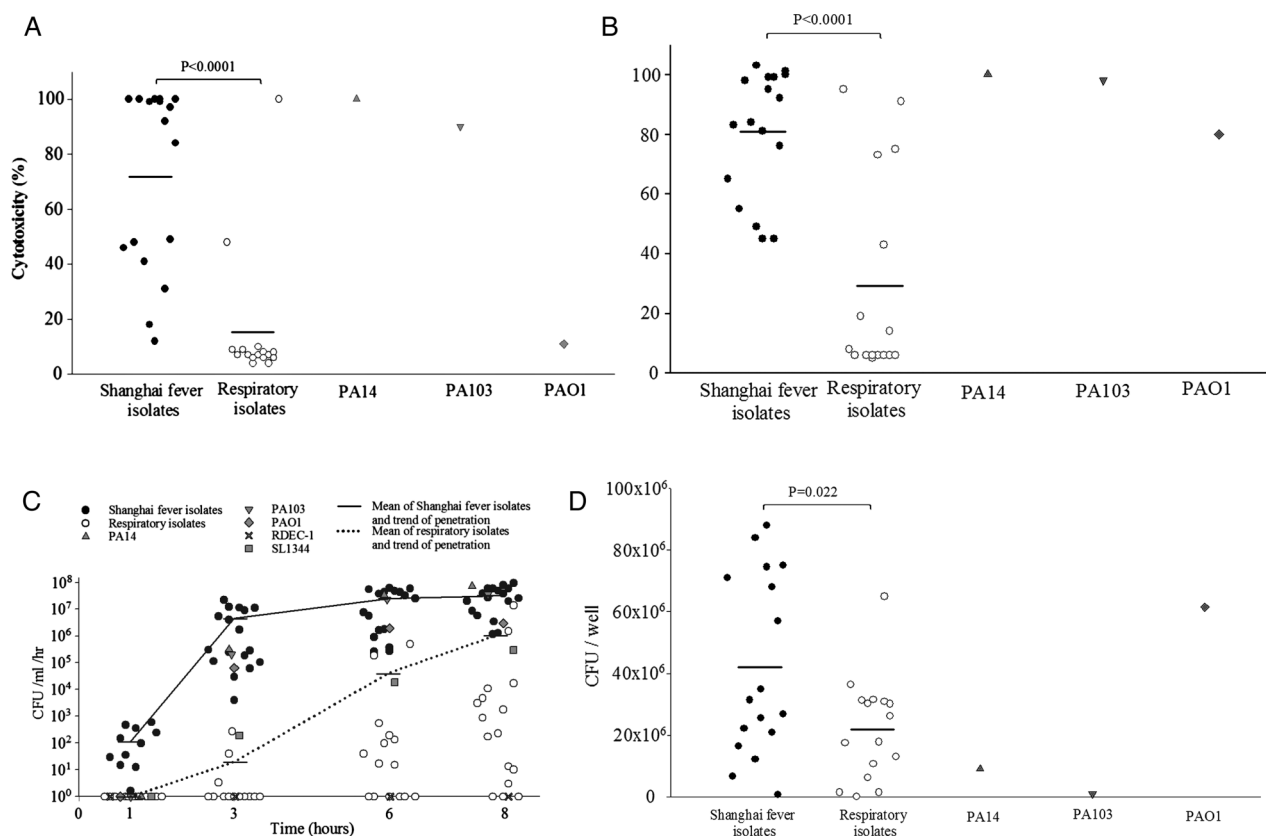


Figure 2 In vitro virulence assays of *Pseudomonas aeruginosa* strains (17 isolates from patients with Shanghai fever; 16 from patients with nosocomial pneumonia; and PA01, PA103 and PA14). (A) Cytotoxicity assays to Madin–Darby canine kidney (MDCK) cells. Isolates from patients with Shanghai fever were significantly more cytotoxic than isolates from patients with nosocomial pneumonia ($p < 0.0001$). Horizontal lines represent means. (B) Cytotoxicity assays to neutrophils. Isolates from Shanghai fever were significantly more cytotoxic than respiratory isolates ($p < 0.0001$). Horizontal lines represent means. (C) Penetration assays. Shanghai fever isolates penetrated the MDCK cell monolayer more rapidly than respiratory isolates ($p < 0.0001$). The numbers of bacteria that penetrated the MDCK cell monolayers were significantly higher with Shanghai fever isolates than respiratory isolates ($p = 0.009$) and laboratory strains ($p = 0.012$) 3 h after inoculation. Shanghai fever isolates had significantly higher penetrative capability than the respiratory and laboratory strains. Horizontal lines represent the means at different time points. (D) Adhesion assays. Shanghai fever isolates were more adherent to Caco-2 cells than were respiratory isolates ($p = 0.022$) and cytotoxic laboratory strains (PA103 and PA14) ($p = 0.001$). Horizontal lines represent means. CFU, colony forming units.

rather than disrupted MDCK cells in an early stage of the infection. The barrier function of MDCK cells was disrupted later owing to cytotoxicity.

In adhesion assays (figure 2D), Shanghai fever isolates were more adherent to Caco-2 cells than respiratory isolates ($p = 0.022$) and cytotoxic laboratory strains (PA103 and PA14) ($p = 0.001$). These in vitro assays showed that *P. aeruginosa* isolates from patients with Shanghai fever are highly cytotoxic, invasive and adherent.

Distribution of TTSS-encoding effector genes

Of the 17 Shanghai fever isolates, 10 (59%) harboured the *exoU* gene, 7 (41%) *exoS*, 17 (100%) *exoT* and 15 (88%) *exoY*. The *exoU* and *exoS* genes were mutually exclusive. Shanghai fever isolates with *exoU* were significantly more cytotoxic than isolates with *exoS* ($p = 0.001$). However, there were no differences in clinical manifestations, complications and mortality between patients infected by *P. aeruginosa* isolates with *exoU* and those with *exoS* (see online supplementary table 1).

Animal studies

The LD₅₀ to the mice of the Shanghai fever isolates determined by an intravenous infection model was extremely low, compared

with that of the laboratory strains, suggesting high virulence of the isolates (figure 3A). Mice orally challenged with Shanghai fever strains of *P. aeruginosa* shed bacteria significantly for longer times than those challenged with laboratory strains (PA01, PA103, PA14) ($p < 0.001$) and the respiratory stains (R3 and R5) ($p = 0.001$) (figure 3B). *P. aeruginosa* isolated from stools of mice showed identical TTSS-encoding effector gene patterns to those used in the challenge (data not shown). Fecal shedding in mice was significantly associated with bacterial adhesion to Caco-2 cells ($r = 0.76$; $p = 0.011$) (figure 3C).

DISCUSSION

Although *P. aeruginosa* can be a gastrointestinal pathogen, most of these infections are mild. Two exceptions are typhilitis or rectal abscesses in neutropenic patients due to chemotherapy and necrotising enterocolitis in premature infants. Shanghai fever is yet another exception that was previously ignored. Nearly 100 cases of community-acquired *P. aeruginosa* sepsis have been reported^{7–15}; most of the reported cases are from East Asia.^{9–11 13–15} In East Asia, community-acquired *P. aeruginosa* sepsis in a previously healthy child is referred to as Shanghai fever. This illness is characterised by sporadic and community-onset necrotising enteritis with sepsis. Interestingly,

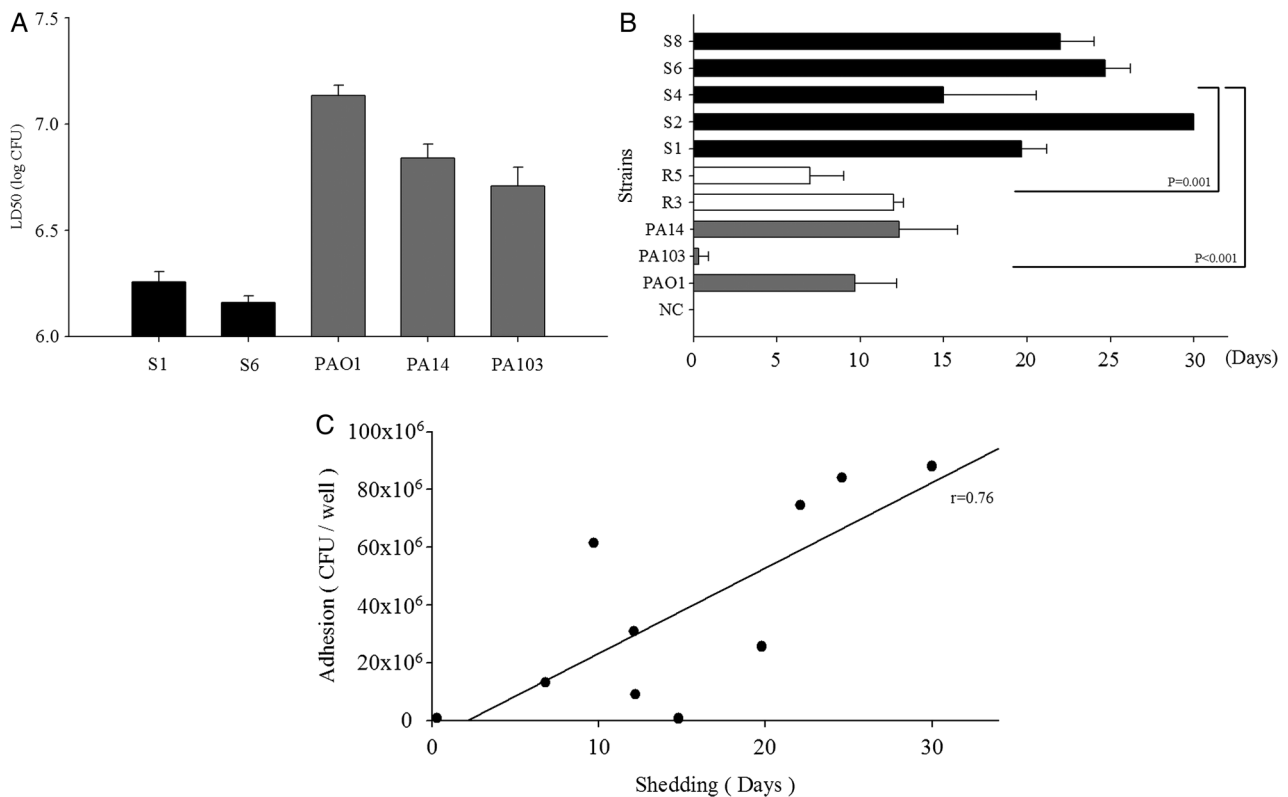


Figure 3 Results of animal experiments. (A) The 50% lethal doses (LD_{50}) of *Pseudomonas aeruginosa* strains to mice by intravenous challenge. Two Shanghai fever isolates (S1 and S6) and the three laboratory strains (PAO1, PA103 and PA14) were tested. Virulence of Shanghai fever isolates was greater than that of laboratory strains. (B) Duration of fecal shedding of *P. aeruginosa* after oral challenge. Stool collected from each mouse before oral challenge was confirmed negative for *P. aeruginosa*. Negative controls (NC) were mice challenged with normal saline. Mice challenged with Shanghai fever isolates of *P. aeruginosa* (S1, S2, S4, S6 and S8) showed significantly longer shedding time than those challenged with laboratory strains (PAO1, PA103 and PA14) ($p < 0.001$) or respiratory isolates (R3 and R5) ($p = 0.001$). The results are expressed as mean \pm SD. The study was terminated at day 30, but S2 shed for more than 30 days. (C) The correlation between adhesion in cellular model and fecal shedding in mice was 0.76 ($p = 0.011$).

the clinical manifestations of these infections appear to be different among patients from Eastern and Western countries. As in the present series, fever and diarrhoea are the most common presentations in East Asia, whereas fever and skin lesions are more common in cases reported from North America and Europe.^{7–15}

Shanghai fever has three main complications. First, widespread patchy necrotising bowel lesions with or without bowel perforation may occur. Although most patients have extensive necrotising enteritis, short bowel syndrome is rare, with only one reported case.⁹ Second, ecthyma gangrenosum occurs in more than 50% of the patients with Shanghai fever, as seen in this study.^{10–11} In contrast, this cutaneous manifestation occurs in only 1.3–2.8% of patients with *Pseudomonas* bacteraemia,²⁴ many of whom are profoundly neutropenic. However, none of the patients with Shanghai fever in this study were neutropenic. Ecthyma gangrenosum was the most common extraintestinal complication in our study and also often affected multiple sites. Third, seizures are frequently associated with Shanghai fever.¹⁵ Cerebrospinal fluid studies showed neither pleocytosis nor increased protein concentration in patients without meningitis. Hyponatraemia may be the main cause of these seizures. In this study, Shanghai fever complicated with meningitis resulted in severe neurological sequelae. Meningitis is the most devastating complication of Shanghai fever.

In Shanghai fever, concurrent infection with other enteropathogenic micro-organisms has been postulated to increase

susceptibility to *P. aeruginosa* infection through local effects on the gastrointestinal mucosa.^{7–9} Rotavirus is the most common cause of gastroenteritis in children aged < 5 years. Yet only one of the patients with Shanghai fever had concomitant rotavirus infection. In addition, the majority of the Shanghai fever cases occurred in the hot and humid season, which is not a peak season for rotavirus infection.

The reported death rate of Shanghai fever ranges from 23% to 89%.^{9–13–15} In the report with the highest death rate, infection with *P. aeruginosa* had not been considered at the time of sepsis onset.¹³ Previous studies suggested that antipseudomonal antibiotics given within 24 h of presentation are significantly associated with lower fatality.^{9–15} Increased awareness and early recognition of this disease with prompt administration of antipseudomonal antibiotics and surgical intervention may be the reason for the lower mortality in this series than in previously published series.^{9–13–15}

Community-acquired *P. aeruginosa* sepsis can be the initial manifestation of underlying immune deficiency. The most common underlying problem in such patients is reportedly hypogammaglobulinaemia.⁷ Although immunoglobulin studies were performed on less than half of the patients in previous reports from Taiwan and Hong Kong, in those patients only one had hypogammaglobulinaemia.¹⁴ However, transient or persistent hypogammaglobulinaemia was not mentioned in that patient. One of our patients had a prolonged hypogammaglobulinaemia. His lymphocyte subset study showed persistently

decreased CD4 T lymphocytes, naïve CD4 T lymphocytes and inverse CD4/CD8 ratio after 6 years of age. This particular patient was HIV negative. The patient had no subsequent recurrent infection and therefore was probably a case of transient hypogammaglobulinaemia of infancy.

Analysis of lymphocyte subsets is diagnostic in many cases of immune deficiency. Declining CD4 T lymphocytes in HIV-infected patients increased the risk of *P aeruginosa* disease.²⁵ CD4 T lymphocytes may defend against *P aeruginosa* infection. Data in this series indicated that none of the patients had common humoral or cellular immune deficiency. Nevertheless, specific immune deficiency could not be ruled out.

Neutropenia is the major risk factor for *P aeruginosa* infection in patients receiving chemotherapy. Although 59% of the patients in our study had neutropenia at the onset of sepsis, their neutrophil counts recovered as their clinical condition improved. *P aeruginosa* isolates with higher cytotoxicity to neutrophils were associated with persistent lung infection.²¹ ExoU-mediated impairment of phagocytes plays a role in the pathogenesis of pneumonia caused by *P aeruginosa*.²⁶ Our in vitro cytotoxicity assays showed that Shanghai fever isolates possessed higher cytotoxicity to neutrophils than respiratory isolates. Neutropenia in patients with Shanghai fever was probably induced by *P aeruginosa* infection rather than a predisposing factor for the infection. The high cytotoxicity of Shanghai fever isolates to neutrophils may facilitate the development of Shanghai fever.

Furthermore, this study is in accord with a previous observation that infants accounted for >80% of reported cases of community-acquired *P aeruginosa* sepsis.^{9–11 13–15} Young age appears to be the only host risk factor identified for Shanghai fever.

The virulence of *P aeruginosa* is multifactorial and combinatorial.²⁷ TTSS is one of the most important determinants of virulence in *P aeruginosa*. Four TTSS effectors have been identified as virulence factors: ExoU, ExoS, ExoT and ExoY.^{28 29} The two distinct bacterial phenotypes, cytotoxic and invasive, correlate with the presence of the *exoU* and *exoS* genes, respectively.³⁰ This study of isolates from patients with Shanghai fever is consistent with earlier findings that strains bearing *exoU* are highly cytotoxic. In a global *P aeruginosa* population structure study, 73% of isolates harboured *exoS* and only 23% *exoU*.³¹ Among isolates from patients with cystic fibrosis, 98% carried *exoS*.³¹ Our study found that isolates harbouring *exoU* were in the majority (59%). ExoU-mediated cytotoxicity may be an important *P aeruginosa* virulence trait in Shanghai fever. A neutropenic murine model of *P aeruginosa* gastrointestinal colonisation and dissemination also found that strains expressing ExoU were more virulent than strains lacking it.³²

Gastrointestinal colonisation with subsequent invasion into the bloodstream is the presumed mechanism of *P aeruginosa* bacteraemia in neutropenic patients. In agreement with previous studies showing that *P aeruginosa* isolates from blood were more adherent than sputum isolates to Caco-2 cells,³³ we found that Shanghai fever isolates were more adherent than respiratory isolates. The highly adherent phenotypes of these isolates may explain their ability to colonise and persist in the gastrointestinal tract of mice after oral inoculation. Likewise, the Shanghai fever isolates were highly cytotoxic and were able to rapidly penetrate through epithelial cell monolayers in cell culture experiments, traits that may facilitate invasion into the bloodstream during human infections. Despite the shared phenotypes of the *P aeruginosa* isolates from patients with Shanghai fever, these isolates

appeared genotypically diverse. This observation is consistent with a previous consensus that there are no specific clones of *P aeruginosa* with a specific disease selection.³¹ Additional studies are necessary to determine whether the enhanced virulence phenotypes of *P aeruginosa* causing Shanghai fever are from different combinations of diverse virulence genes or whether they share specific pathogenicity islands.

Shanghai fever is a distinct and fulminant *P aeruginosa* enteric disease in infants. Both host and microbial factors contribute to its pathogenesis.

Acknowledgements The authors thank Professor David P Speert for providing the PAO1 and PA103, Professor Robert E W Hancock and Professor David P Speert for their helpful ideas and advice and Dr Jeng-Chang Chen for providing the photograph.

Contributors C-H Chuang: contributed to the experimental plan, performed research, analysed the data and wrote the manuscript; Y-HW, H-JC and H-LC: contributed to the experimental plan, performed research and analysed the data; Y-CH and T-YL: analysed the data, commented on the manuscript; EAO, JPA and ARH: performed research, analysed the data, commented on the manuscript; C-H Chiu: conceived the overall research plan, analysed the data and wrote the manuscript.

Funding This work was in part supported by St Paul's Hospital grant SMRPG380031 and Chang Gung Memorial Hospital grants CMRPG340235 and CMRPG380071 to C-H Chiu. The study was also supported, in part, by National Institutes of Health grants R01AI075191 (ARH), R01AI053674 (ARH), F32AI089068 (EAO) and T32AI0007476 (JPA).

Competing interests None.

Ethics approval Institutional review board of Chang Gung Memorial Hospital.

Provenance and peer review Not commissioned; externally peer reviewed.

Open Access This is an Open Access article distributed in accordance with the Creative Commons Attribution Non Commercial (CC BY-NC 3.0) license, which permits others to distribute, remix, adapt, build upon this work non-commercially, and license their derivative works on different terms, provided the original work is properly cited and the use is non-commercial. See: <http://creativecommons.org/licenses/by-nc/3.0/>

REFERENCES

- Bodey GP, Bolivar R, Fainstein V, *et al.* Infections caused by *Pseudomonas aeruginosa*. *Rev Infect Dis* 1983;5:279–313.
- Grisaru-Soen G, Lerner-Geva L, Keller N, *et al.* *Pseudomonas aeruginosa* bacteremia in children: analysis of trends in prevalence, antibiotic resistance and prognostic factors. *Pediatr Infect Dis J* 2000;19:959–63.
- Adlard PA, Kirov SM, Sanderson K, *et al.* *Pseudomonas aeruginosa* as a cause of infectious diarrhoea. *Epidemiol Infect* 1998;121:237–41.
- Kim SW, Peck KR, Jung SI, *et al.* *Pseudomonas aeruginosa* as a potential cause of antibiotic-associated diarrhea. *J Korean Med Sci* 2001;16:742–4.
- Dold H. On pyocyanus sepsis and intestinal infections in Shanghai due to *Bacillus pyocyanus*. *Chin Med J* 1918;32:435.
- Lepow ML. *Pseudomonas aeruginosa* colonization and infection of the gastrointestinal tract. In: Baltch AL, Smith RP, eds. *Pseudomonas aeruginosa infections and treatment*. New York: Marcel Dekker Press, 1994:421–40.
- Chusid MJ, Hillmann SM. Community-acquired *Pseudomonas aeruginosa* sepsis in previously healthy infants. *Pediatr Infect Dis J* 1987;6:681–4.
- Martin-Ancel A, Borque C, del Castillo F. *Pseudomonas* sepsis in children without previous medical problems. *Pediatr Infect Dis J* 1993;12:258–60.
- Huang YC, Lin TY, Wang CH. Community-acquired *Pseudomonas aeruginosa* sepsis in previously healthy infants and children: analysis of forty-three episodes. *Pediatr Infect Dis J* 2002;21:1049–52.
- Yeung CK, Lee KH. Community acquired fulminant *Pseudomonas* infection of the gastrointestinal tract in previously healthy infants. *J Paediatr Child Health* 1998;34:584–7.
- Tsai MJ, Teng CJ, Teng RJ, *et al.* Necrotizing bowel lesions complicated by *Pseudomonas* septicemia in previously healthy infants. *Eur J Pediatr* 1996;155:216–18.
- Viola L, Langer A, Pulitano S, *et al.* Serious *Pseudomonas aeruginosa* infection in healthy children: case report and review of the literature. *Pediatr Int* 2006;48:330–3.
- He SJ, Jin YM, Huang AR, *et al.* Clinical analysis of community-acquired *Pseudomonas aeruginosa* septic shock. *Zhonghua Er Ke Za Zhi* 2008;46:333–9.
- Kuo KC, Kuo HC, Huang LT, *et al.* The clinical implications of ABO blood groups in *Pseudomonas aeruginosa* sepsis in children. *J Microbiol Immunol Infect* 2013;46:109–14.

- 15 Zhang Q, Smith JC, Zhu Q, *et al.* A five-year review of *Pseudomonas aeruginosa* bacteremia in children hospitalized at a single center in southern China. *Int J Infect Dis* 2012;16:e628–32.
- 16 Shearer WT, Rosenblatt HM, Gelman RS, *et al.* Lymphocyte subsets in healthy children from birth through 18 years of age: the Pediatric AIDS Clinical Trials Group P1009 study. *J Allergy Clin Immunol* 2003;112:973–80.
- 17 Imai K, Slupphaug G, Lee WI, *et al.* Human uracil-DNA glycosylase deficiency associated with profoundly impaired immunoglobulin class-switch recombination. *Nat Immunol* 2003;4:1023–8.
- 18 Hirakata Y, Finlay BB, Simpson DA, *et al.* Penetration of clinical isolates of *Pseudomonas aeruginosa* through MDCK epithelial cell monolayers. *J Infect Dis* 2000;181:765–9.
- 19 Clinical and Laboratory Standards Institute. *Performance standards for antimicrobial susceptibility testing*. Twenty-Second informational supplement. Document M100-S22. Wayne, PA: CLSI, 2012.
- 20 Curran B, Jonas D, Grundmann H, *et al.* Development of a multilocus sequence typing scheme for the opportunistic pathogen *Pseudomonas aeruginosa*. *J Clin Microbiol* 2004;42:5644–9.
- 21 El Solh AA, Akinnusi ME, Wiener-Kronish JP, *et al.* Persistent infection with *Pseudomonas aeruginosa* in ventilator-associated pneumonia. *Am J Respir Crit Care Med* 2008;178:513–19.
- 22 Stepinska M, Trafny EA. Diverse type III secretion phenotypes among *Pseudomonas aeruginosa* strains upon infection of murine macrophage-like and endothelial cell lines. *Microb Pathog* 2008;44:448–58.
- 23 Reed L, Muench J. A simple method for estimating fifty percent endpoints. *Am J Hyg* 1938;27:493–7.
- 24 Zomorodi A, Wald ER. Ecthyma gangrenosum: considerations in a previously healthy child. *Pediatr Infect Dis J* 2002;21:1161–4.
- 25 Sorvillo F, Beall G, Turner PA, *et al.* Incidence and determinants of *Pseudomonas aeruginosa* infection among persons with HIV: association with hospital exposure. *Am J Infect Control* 2001;29:79–84.
- 26 Diaz MH, Hauser AR. *Pseudomonas aeruginosa* cytotoxin ExoU is injected into phagocytic cells during acute pneumonia. *Infect Immun* 2010;78:1447–56.
- 27 Lee DG, Urbach JM, Wu G, *et al.* Genomic analysis reveals that *Pseudomonas aeruginosa* virulence is combinatorial. *Genome Biol* 2006;7:R90.
- 28 Shaver CM, Hauser AR. Relative contributions of *Pseudomonas aeruginosa* ExoU, ExoS and ExoT to virulence in the lung. *Infect Immun* 2004;72:6969–77.
- 29 Vance RE, Rietsch A, Mekalanos JJ. Role of the type III secreted exoenzymes S, T and Y in systemic spread of *Pseudomonas aeruginosa* PAO1 in vivo. *Infect Immun* 2005;73:1706–13.
- 30 Fleiszig SM, Zaidi TS, Preston MJ, *et al.* Relationship between cytotoxicity and corneal epithelial cell invasion by clinical isolates of *Pseudomonas aeruginosa*. *Infect Immun* 1996;64:2288–94.
- 31 Pirnay JP, Bilocq F, Pot B, *et al.* *Pseudomonas aeruginosa* population structure revisited. *PLoS One* 2009;4:e7740.
- 32 Koh AY, Priebe GP, Pier GB. Virulence of *Pseudomonas aeruginosa* in a murine model of gastrointestinal colonization and dissemination in neutropenia. *Infect Immun* 2005;73:2262–72.
- 33 Hirakata Y, Izumikawa K, Yamaguchi T, *et al.* Adherence to and penetration of human intestinal Caco-2 epithelial cell monolayers by *Pseudomonas aeruginosa*. *Infect Immun* 1998;66:1748–51.

Supplementary Table 1. Comparison of diseases caused by isolates carrying *exoS* and those carrying *exoU*

	<i>exoS</i> (n=7)	<i>exoU</i> (n=10)	P value	Odds ratio (95% C.I.)
Bloody/mucoid stool	2 (29%)	4 (40%)	1.000	1.67 (0.21-13.22)
Shock	6 (86%)	6 (60%)	0.338	0.25(0.02-2.95)
Necrotizing enteritis	5 (71%)	8 (80%)	1.000	1.60 (0.17-15.27)
Bowel perforation	2 (29%)	3 (30%)	1.000	1.07 (0.13-8.98)
Ecthyma gangrenosum	4 (57%)	5 (50%)	1.000	0.75 (0.11-5.24)
Seizure	3 (44%)	2 (20%)	0.593	0.33 (0.04-2.87)
Mortality	2 (29%)	2 (20%)	1.000	1.60 (0.17-15.27)

Data are number (%)

Supplementary Figure 1. Minimum spanning tree of isolates from Shanghai fever by MLST. Circles represent STs and size of circle is associated with number of isolates. Blue line represent 3 locus variants, green lines represent 4 locus variants, red dotted lines represent 5 locus variants, and purple dotted lines represent 6 locus variants. STs of PAO1, PA103 and PA14 are shown for comparison. Isolates belonged to ST244, ST1025, and ST 1026 carry *exoS*, isolates belonged to other STs carry *exoU*. Isolates carrying *exoS* are more homogeneous. Shanghai fever is not caused by a single clone of *P. aeruginosa*.

