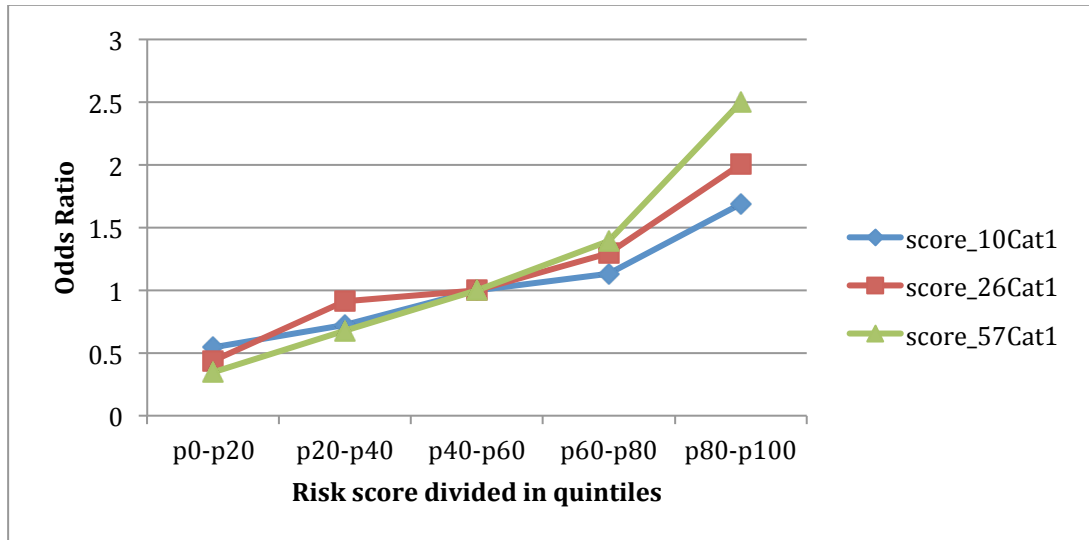


**Supplementary Figure 1.** Plot of odds ratio for coeliac disease associated with quintiles of the GRS<sub>10</sub>, GRS<sub>26</sub> and GRS<sub>57</sub> models in a nominal logistic regression, using the third quintile as reference and HLA group, gender and population origin as covariates.



**Supplementary Figure 2.** Survival analysis using GRS<sub>26</sub> and adjusting for gender, recruitment group and HLA group in DQ2- and DQ8-positive individuals. None of the groups showed statistical significance with the lowest group (p0-p20) taken as reference group.

