

Supplementary Figures

Figure S1. CA4 expression status in colon cancer cell lines and in different human tissues. (A) mRNA expression of six candidate genes identified by MeDIP array was examined in colon cancer cell lines and in normal colon tissue by RT-PCR. (B) CA4 mRNA expression in human normal tissues. β -actin served as loading control.

S Figure 1

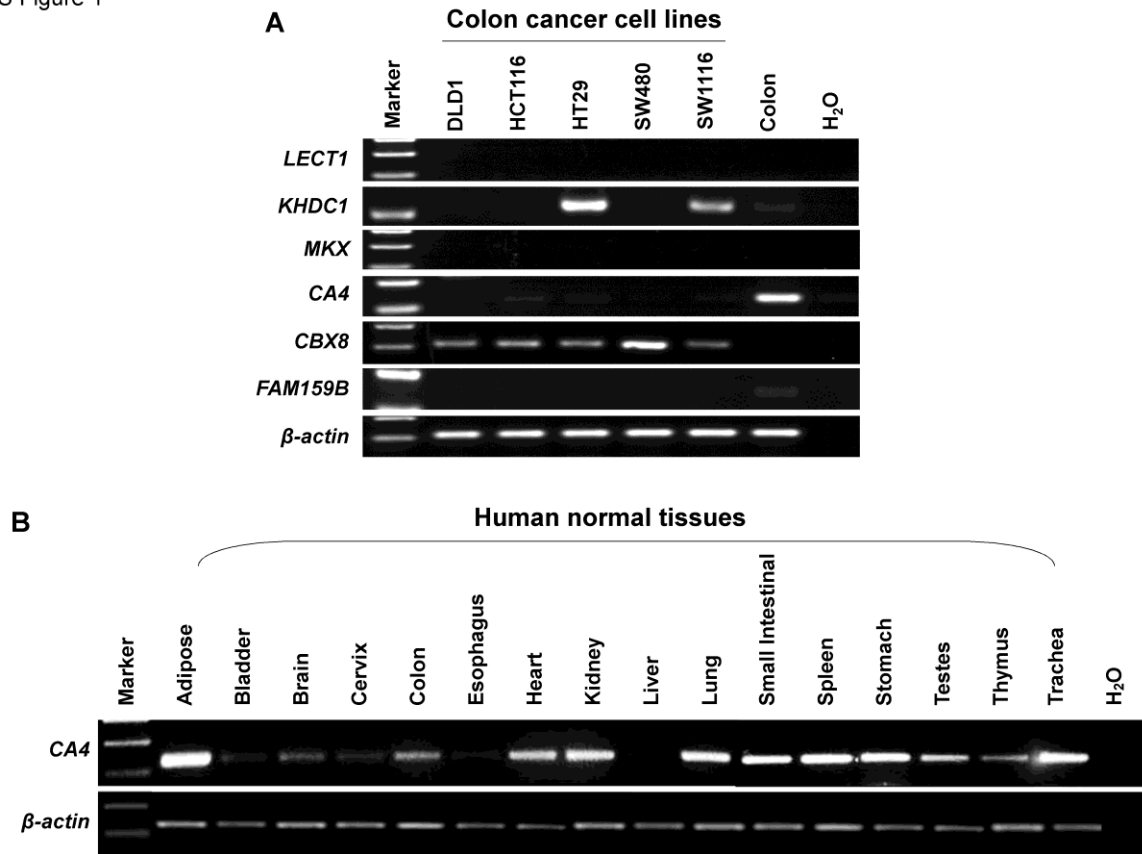


Figure S2. To determine the effect of siRNA against *TBL1*. (A) To confirm the knockdown effect of *TBL1* siRNA in HCT116 and SW1116 cells. (B) Knockdown of *TBL1* did not alter the expression level of *WTAP*. Real-time PCR was employed to determine the expression level. Fold changed in the corresponding gene expression was relative to untreated cells. β -actin served as internal control.

Figure S2

