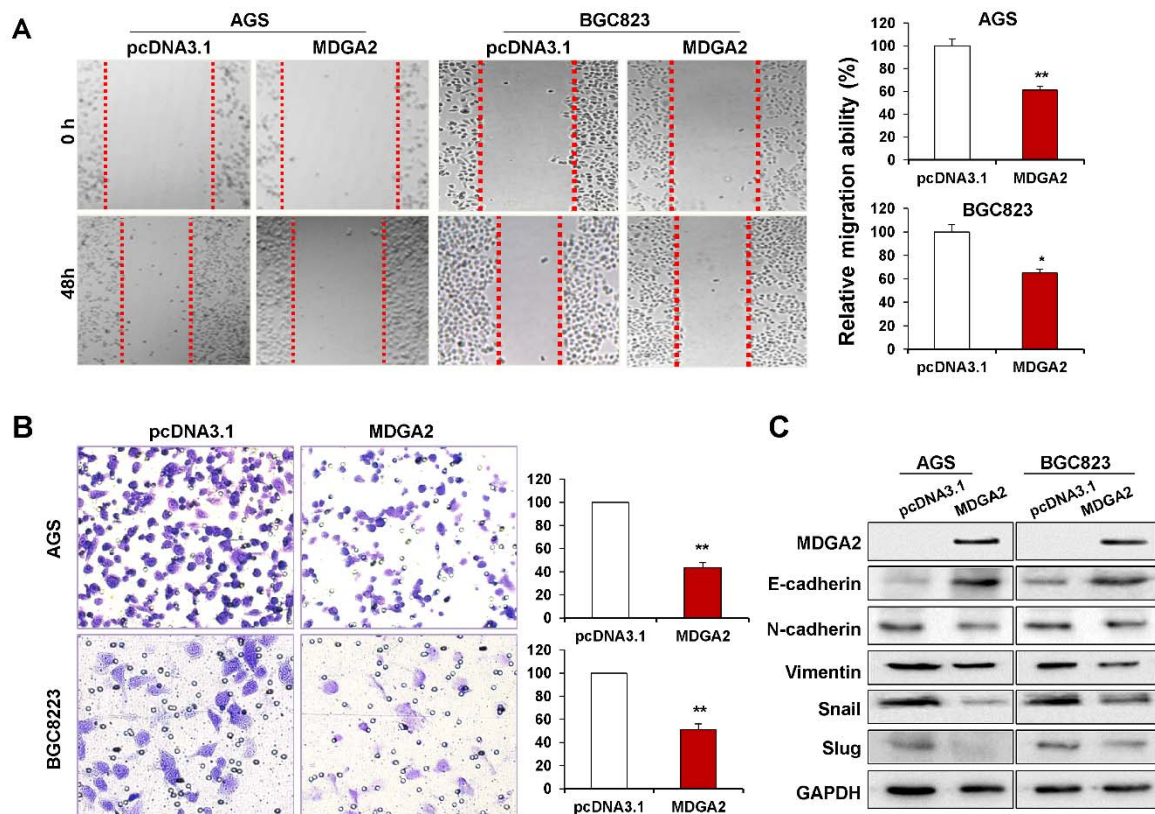


Supplementary Figure 1. Effect of MDGA2 on cell migration and invasion. (A) The cell motility of AGS and BGC823 cells with MDGA2 expression vector or empty vector was determined by wound healing assay. Photographs were taken at 0 and 48 h to determine the different mobility between MDGA2 expression vector cells and empty vector cells. Number of cells that entered the scratch region was shown as mean \pm SD. All experiments were performed in triplicate. (B) Matrigel invasion assay shows invasiveness and metastasis of cells with or without MDGA2. The data are means \pm SD. of three separate experiments. * $P < 0.01$, ** $P < 0.001$. (C) Altered protein expression of epithelial-mesenchymal transition (EMT) markers including E-cadherin, N-cadherin, Vimentin, Snail and Slug in MDGA2 overexpressing cells were examined by Western blot.

Supplementary Figure 1



Supplementary Figure 2. MDGA2 induces p53/p21 signaling cascade partially dependent on DMAP1. Knockdown DMAP1 by siDMAP1 transfection in AGS and BGC823 cells with stable MDGA2 over-expression partially decreased the protein expression of p53 and p21 in both cell lines as determined by Western blot. siNC, si-control.

Supplementary Figure 2

