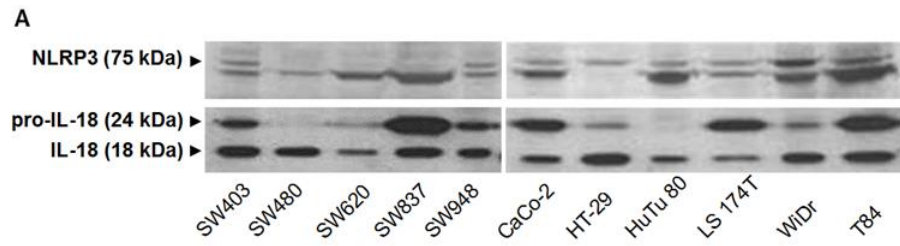


Supplementary Figures

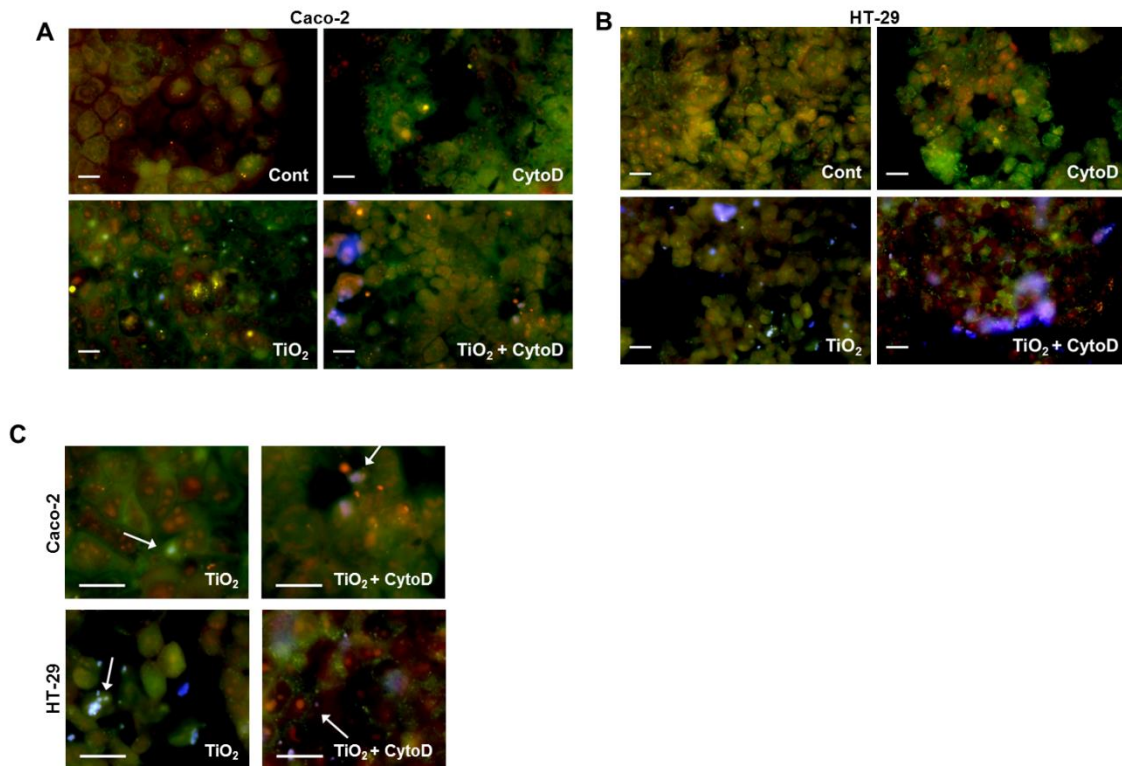
Supplementary Figure 1. LPS induces the expression of inflammasome components in human IEC lines.



Commonly used IEC lines were stimulated with crude LPS at a concentration of 10 $\mu\text{g}/\text{ml}$ for 24

h. Expression of NLRP3 and IL-18 was confirmed by Western Blot.

Supplementary Figure 2. Uptake of TiO₂ does not affect lysosomal stability in IECs.



A, B, and C, Caco-2 (A) and HT-29 (B) were grown on coverslips and left untreated, challenged with cytochalasin D, 20 $\mu\text{g}/\text{ml}$ TiO₂, or with both compounds for 24 h and stained with acridine orange, which was incorporated in the cytosol (green) and lysosomes (red). No difference in number and structure of lysosomal compartments was observed as compared to untreated cells. Scale bars: 20 μm . C, magnification of acridine-orange stained Caco-2 cells and HT-29 incubated with TiO₂, or TiO₂ and cytochalasin D. Lysosomes were present as round orange structure distributed equally in each cell. Blue specks are TiO₂ aggregates (indicated by arrow). Intact lysosomes were found in both treatment groups. Scale bars: 20 μm .