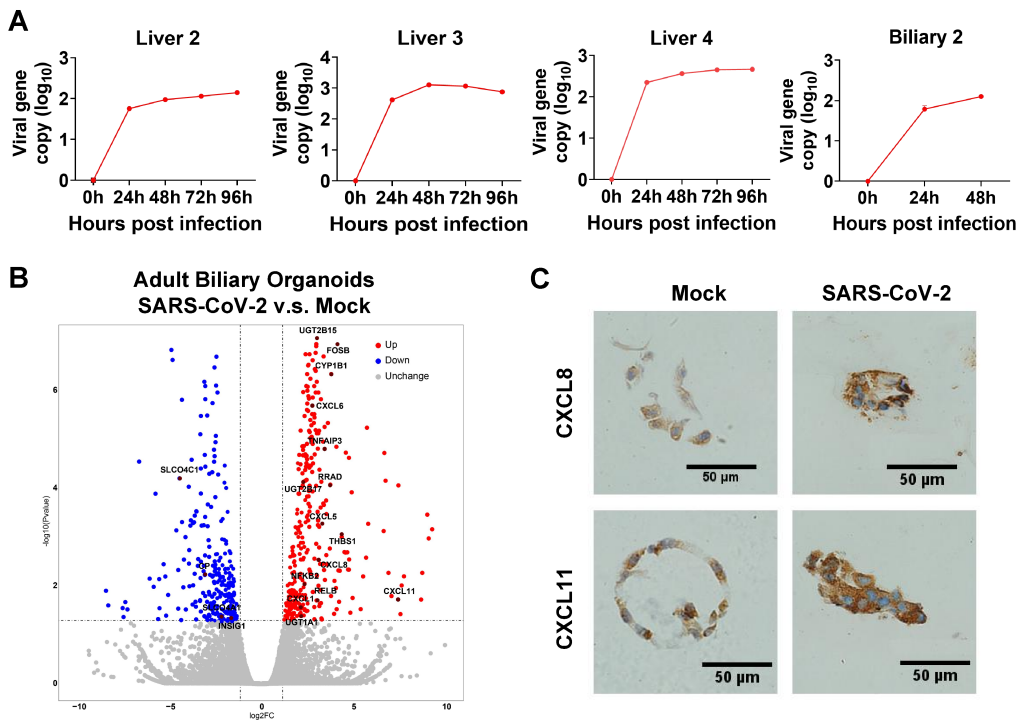


Supplementary Figure 2



Supplementary Figure 2 (A) RT-qPCR analysis for viral sequences shows virus can productively replicate in the liver organoids at 0, 24, 48, 96 hours and in the biliary organoids at 0, 24, 48 hours after infection with SARS-CoV-2. **(B)** Volcano plot analysis of differentially expressed genes from SARS-CoV-2-infected biliary organoids compared to mock infection organoids. Individual genes denoted by gene name. Upregulated differentially expressed genes (p -adjusted value < 0.05) with a \log_2 (Fold Change) > 2 are indicated in red. Downregulated differentially expressed genes (p -adjusted value < 0.05) with a \log_2 (Fold Change) > 2 are indicated in blue. **(C)** Histopathologic staining of inflammatory markers (CXCL8 and CXCL11) of patient-derived biliary organoids at 0 hour and 24 hours of SARS-CoV-2 virus infection. Scale bar, 50 μm .