

Figure S1. SQLE mRNA (**A**) and protein (**B**) expression was determined by qPCR and Western blot.

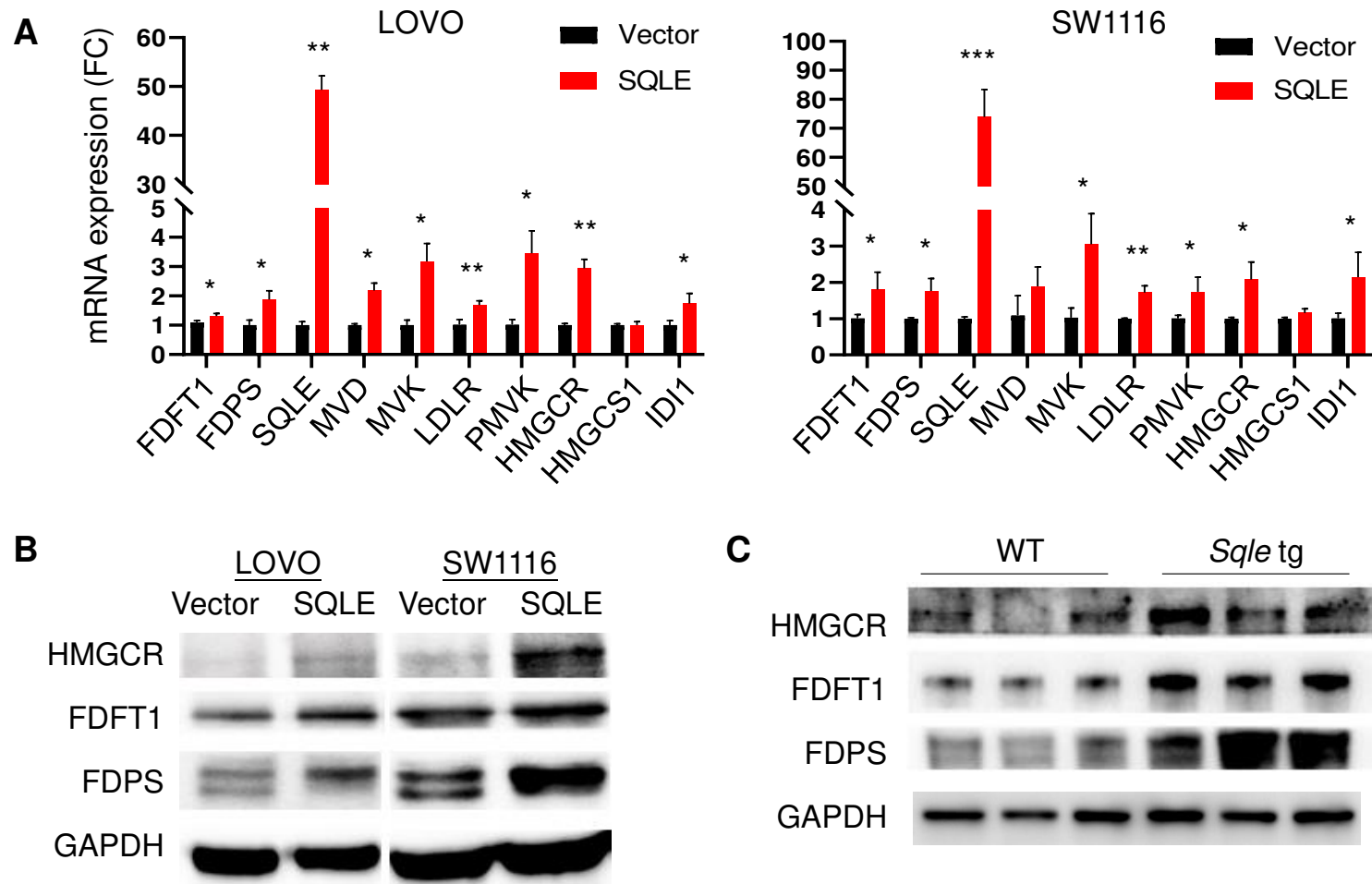


Figure S2. SQLE overexpression promotes genes of cholesterol biosynthesis pathway in (A) CRC cell lines by qPCR (A) and Western blot (B), and in colon-specific *Sqle* tg mice by Western blot (C).

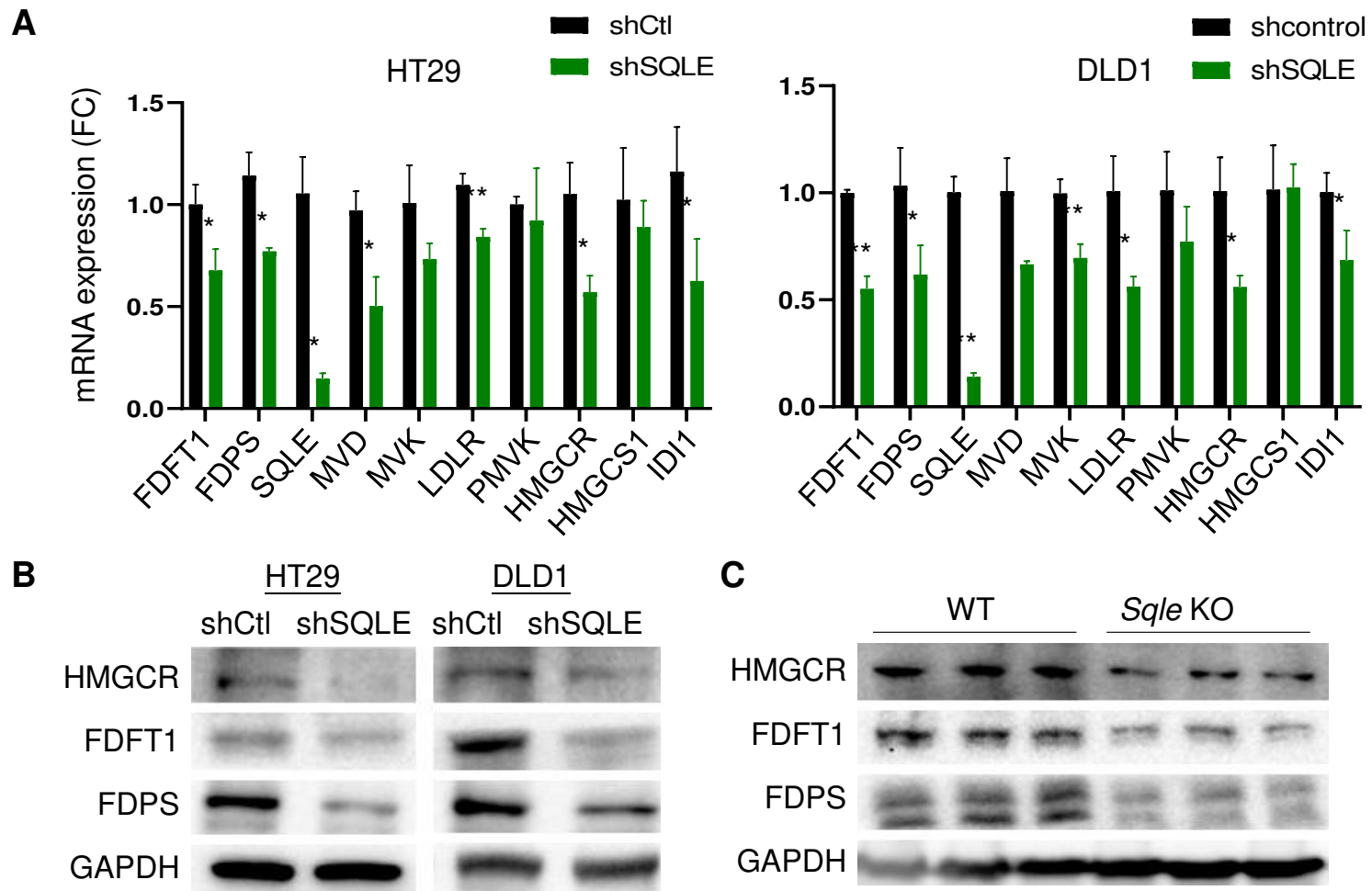


Figure S3. SQLE knockdown inhibits genes of cholesterol biosynthesis pathway in (A) CRC cell lines by qPCR (A) and Western blot (B), and in colon-specific *Sqle* tg mice by Western blot (C).

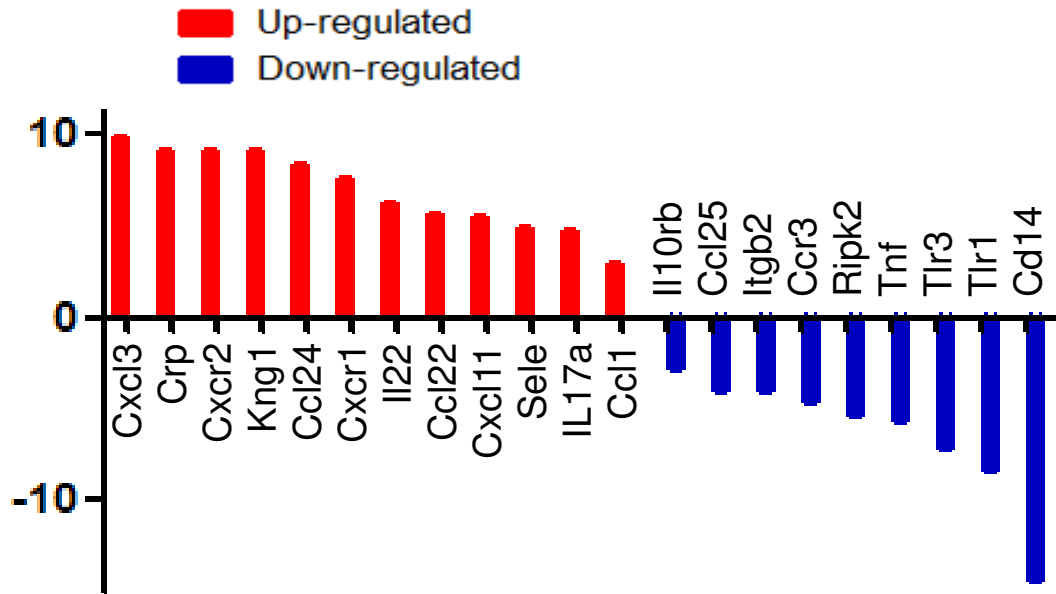


Figure S4. Inflammation pathway PCR array analysis of the colon tissues from Sqle tg mice and wildtype littermates.

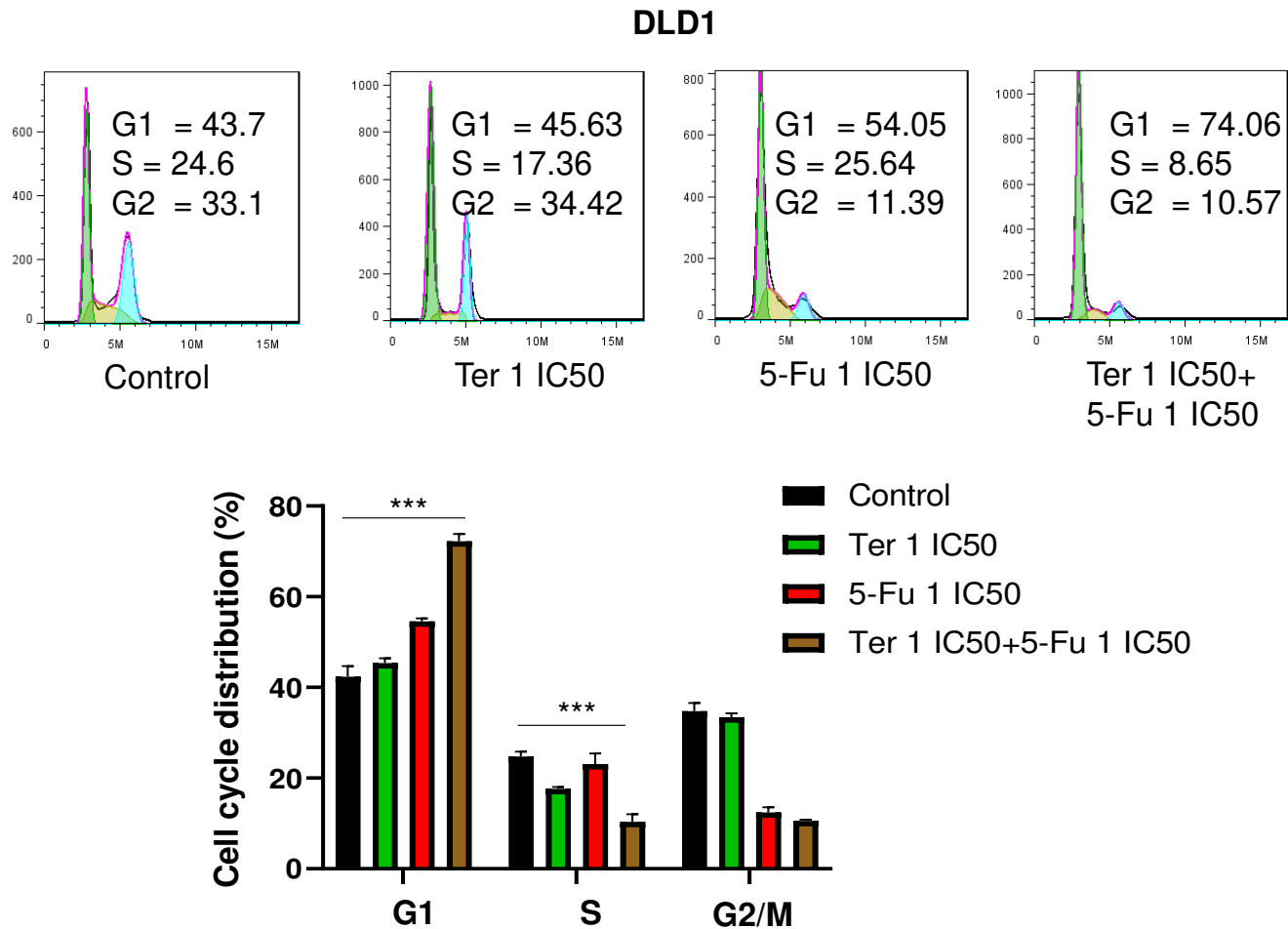


Figure S5. Terbinafine in combination with 5-FU synergistically induced G1 cell cycle arrest in DLD1 cells.